

71ST BIENNIAL

CONVENTION

ΚΚΓ

BE WOMEN WHO KAPPA

SAN DIEGO

JUNE 22-26 2016



TABLE OF CONTENTS

WELCOME LETTER	2
PROPOSED ORGANIZATIONAL STRUCTURE	3
SHERATON SAN DIEGO HOTEL & MARINA MAPS	4
GENERAL INFORMATION	6
CONVENTION SPEAKERS	8
FOUNDATION INFORMATION	10
2016 GENERAL CONVENTION RULES	12
SCHEDULE OF EVENTS	16
SESSION DESCRIPTIONS	28
CONVENTION CONTRIBUTORS	44
SPONSORS	45
FRATERNITY DIRECTORY	46
NOTES	52

 greekyearbook WWW.GREEKYEARBOOK.COM
1.866.GREEK.YB

FREE BID DAY PHOTOGRAPHY



+ OUR CURRENT PROMOTION:

FREE New Member Announcement Cards
(envelopes included)

- » Mail to Alumnae
- » Gift to the New Members
- » Send to Parents



PROMO CODE:
NEWKKG

Promotion expires: 12.31.16

COMPOSITE PHOTOGRAPHY



CURRENT PROMOTION:

Up to \$500 OFF your composite

- » Discount is based on chapter size
- » Only available to new customers
- » Receive additional discount for bundling
with Bid Day

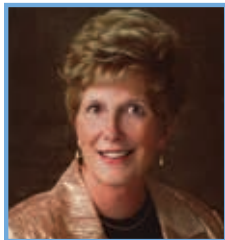
PROMO CODE: **KKG500**

Promotion expires: 12.31.16

WELCOME TO KAPPA CONVENTION 2016



BETH UPHOFF BLACK
Fraternity President



KAY REID TENNISON
Foundation President

WELCOME KAPPA SISTERS!

On behalf of the 2014–2016 Fraternity Council and Foundation Board of Trustees, it is our pleasure to welcome you to the Fraternity's 71st Biennial Convention in San Diego. We hope you will enjoy this opportunity to meet sisters of many generations from across the United States and Canada.

This program and the mobile Guidebook app are your tools to navigate each day of Convention. You won't want to miss the interesting educational sessions, exciting award presentations or inspiring speakers. Please take note of the daily business meetings and the Foundation's special luncheon event.

This biennium, we have shared changes recommended by the Fraternity's Long-Range Planning Task Force, which was charged in 2012 with studying our volunteer structure and distribution of responsibilities within our organization. This week we will consider amendments to our governing documents that will afford more manageable volunteer opportunities for our members, as well as provide enhanced support to our alumnae associations and chapters.

If you would like to learn more about the proposed changes, please plan to attend the Bylaws Forum or Ready, Set, Go!: Implementing the Proposed Organizational Structure, on Thursday, June 23 at 11:15 a.m. In order to stay relevant and be leaders in the Panhellenic community, Kappa must adapt to the rapidly changing external landscape, while steadfastly maintaining our core values and ideals. Kappa has been and will always be a volunteer-directed organization.

As #womenwhokappa, we believe in the work we do. We believe in standing up for one another. We recognize the importance of moving Kappa Kappa Gamma forward. We support the Fraternity, and strengthen the Foundation—the philanthropic arm of the Fraternity—with our gifts to ensure a bright future for Kappa.

Please visit the Foundation Tribute Table so that whatever your passion, your donation supports the area of Kappa that is near and dear to your heart. The strength of our bonds of sisterhood gives credence to who we are and what we do.

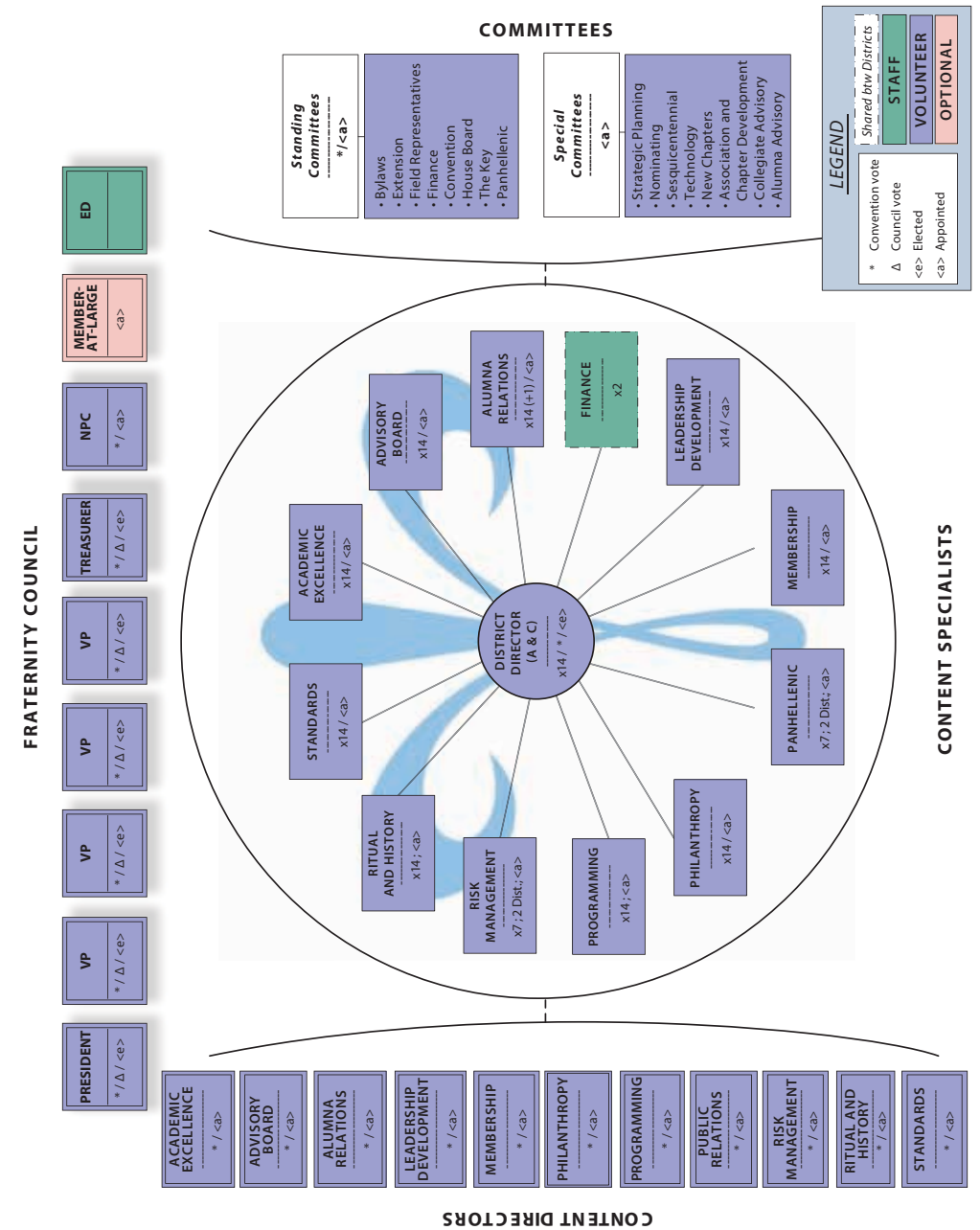
We are optimistic about the future of our beloved Kappa Kappa Gamma and excited about the proposed direction for our organization—and hope you are too. As we celebrate our accomplishments and look toward change, we are encouraged that our work will continue to move the Fraternity and Foundation forward. Thank you for taking time this week to be #womenwhokappa. We truly appreciate your support of our Fraternity, our Foundation and of one another. We are proud to be Kappa sisters.

Loyally,

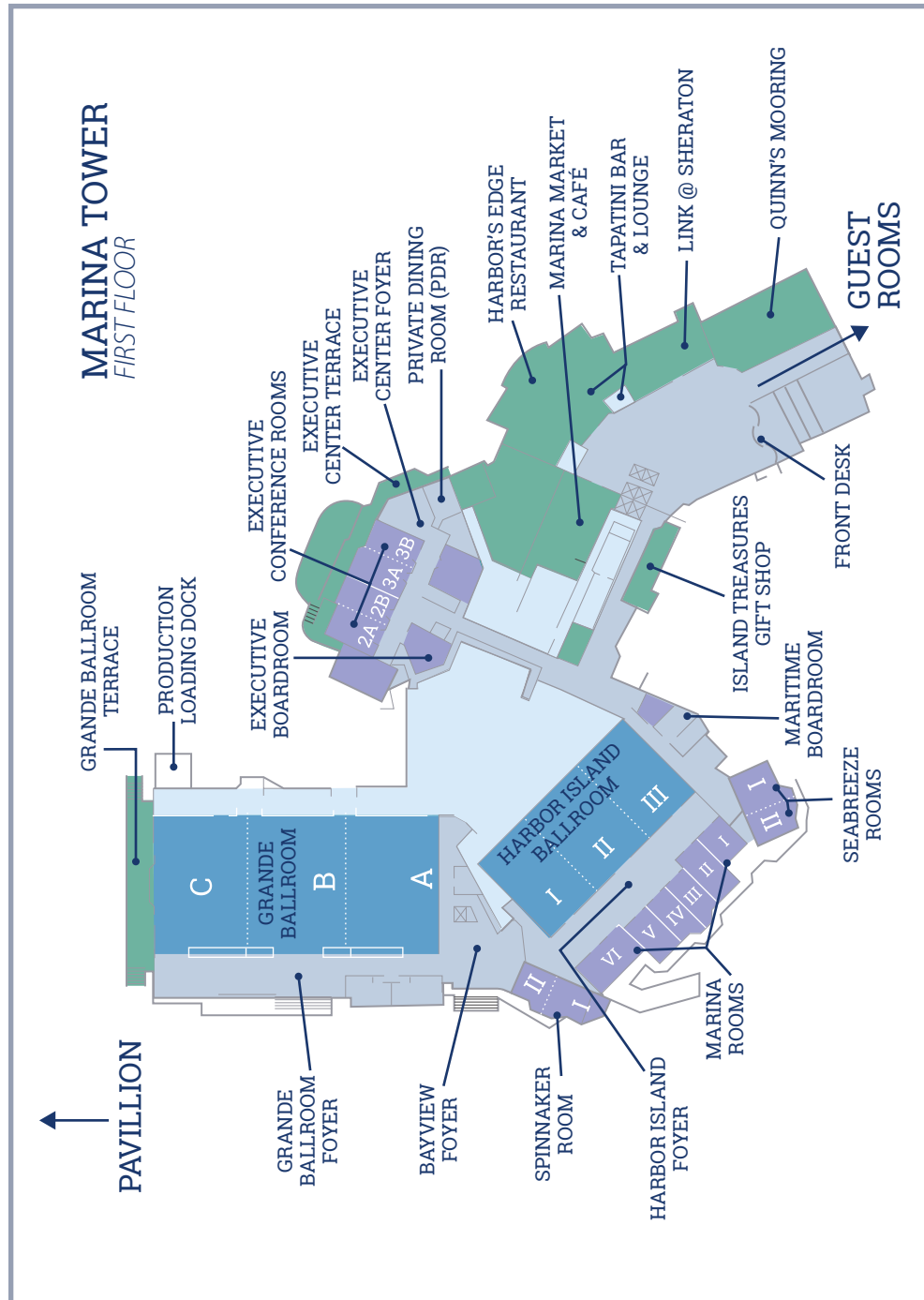
Beth Black
Beth Uphoff Black
Fraternity President

Kay Tension
Kay Reid Tension
Foundation President

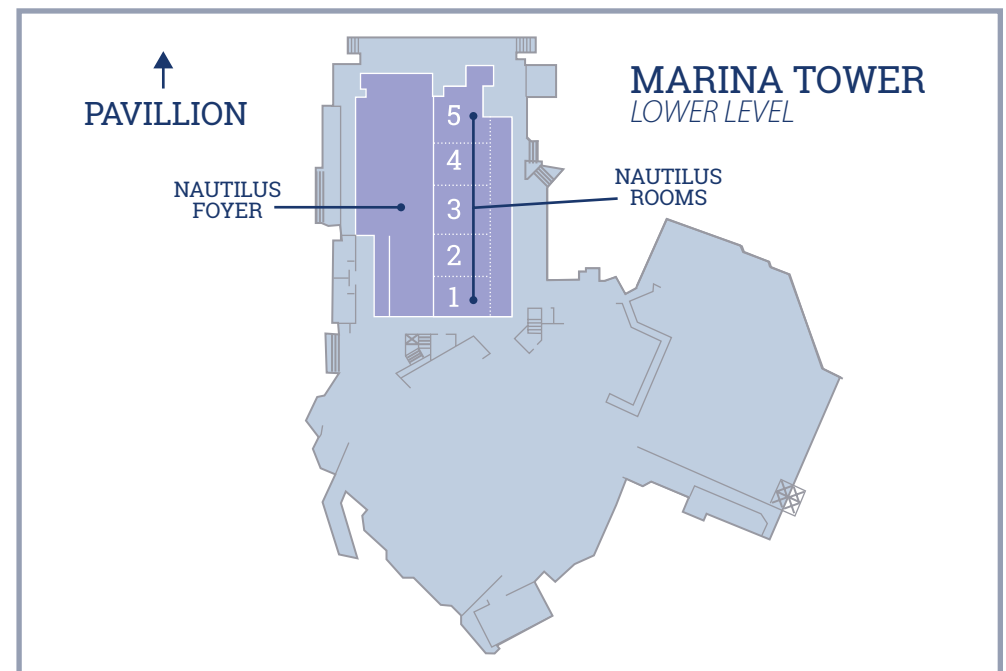
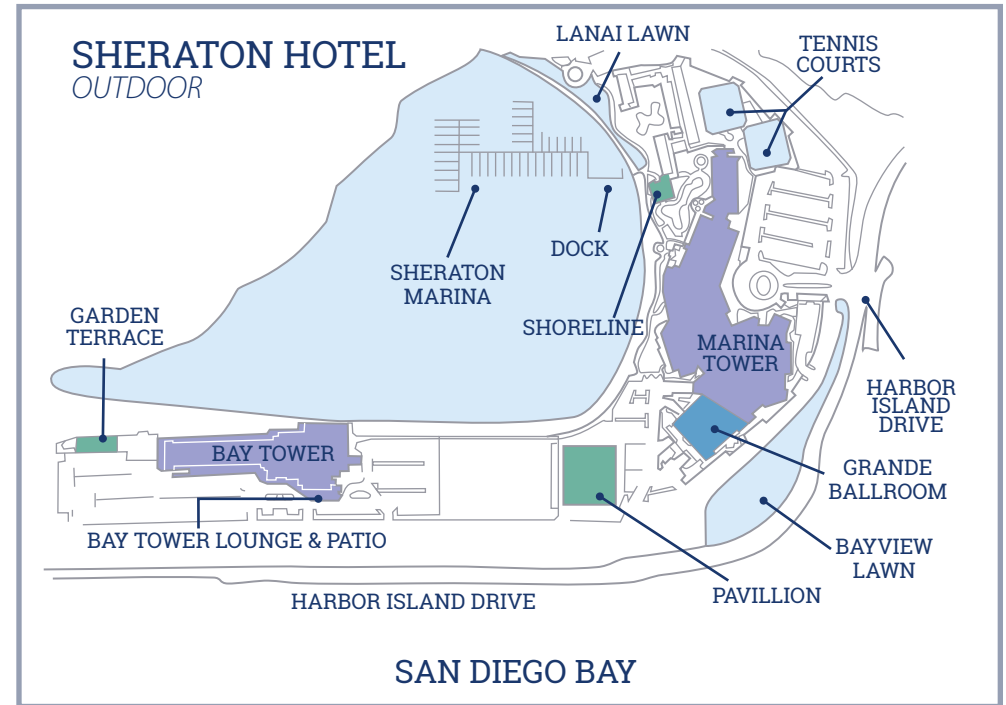
PROPOSED ORGANIZATIONAL STRUCTURE



SHERATON SAN DIEGO



HOTEL & MARINA MAPS



GENERAL INFORMATION

- In case of an emergency, please call the hotel operator (dial 0). In case of a fire in the meeting areas, an alarm will sound and the hotel staff will direct you to the appropriate location. If an alarm sounds while you are in your sleeping room, follow the evacuation procedures on the back of each guest room door.
- Visit the Kappa Koncierge Desk to read posted changes to the program, learn more about the Guidebook app, check the lost and found, find local pharmacies or ask general information questions.
- Guests may attend all events of this Convention except business meetings and the closing ritual following Candlelight Banquet, Saturday, June 25.
- White attire is required at the opening and closing business meetings and for the Memorial Service.
- Gratuities for meals are included in your hotel bill, which you paid at the time of registration. You are expected to personally take care of any gratuities to hotel staff members for special services you may require.
- All hotel guests must check out of the hotel before departure and all personal expenses must be paid at this time.
- There will be a special interest alumnae association gathering on Friday, June 24 from 5:30 p.m.–6:00 p.m.



GOLDEN KEY – Want to be a part of a group of Kappas who search for and purchase badges to ensure they do not reach the hands of nonmembers? Join the Golden Key Alumnae Association gathering on Friday.

NAME TAG COLORS

GREEN	Designated Official and Extended Family Members
YELLOW	Chapter Delegates
BLUE	Alumnae Association Delegates
ORANGE	Advisers
PURPLE	House Board Representatives
ROSE PINK	Foundation
WHITE	Non-Voting Members



GENERAL INFORMATION

BLUE OWL BOUTIQUE HOURS *Spinnaker*

WEDNESDAY, JUNE 22

1:00 p.m.–6:00 p.m.
(drop off items)

FRIDAY, JUNE 24

11:00 a.m.–6:00 p.m.
8:30 p.m.–11:00 p.m.

THURSDAY, JUNE 23

11:00 a.m.–7:00 p.m.
9:00 p.m.–10:30 p.m.

SATURDAY, JUNE 25

9:00 a.m.–1:00 p.m.
4:00 p.m.–6:30 p.m. (pick up items)

MARKETPLACE HOURS *Harbor Island 3*

Visit Kappa's licensed vendor event for all your Kappa swag. This is a two-day event, so be sure to stop by for some fabulous finds!

FEATURED VENDOR: HERFF JONES – GREEK DIVISION

Kappa's official Fraternity jeweler will be open during MarketPlace hours and will be at Convention through Friday.

WEDNESDAY, JUNE 22

2:00 p.m.–7:00 p.m.

THURSDAY, JUNE 23

11:00 a.m.–7:00 p.m.





CONVENTION SPEAKERS



CAROL COORDT

Carol is a dedicated Kappa Delta sorority member from San Jose State University. She has actively pursued leadership roles in the Greek community since attending Convention as an active member in 1964. Carol has served Kappa Delta in many roles including National Director of Membership, Province Alumnae Officer and as a member of Kappa Delta's National Council from 1979–1987. She currently serves on the Alumnae Panhellenic Awards Committee and the Recruitment Committee

for the National Panhellenic Conference, in addition to being the Alumnae Panhellenic Area Coordinator and the second alternate NPC Delegate for Kappa Delta.

Carol resides in Manhattan Beach, Calif., with her husband, Bob, whom she met when he was a hasher/bus boy at the Kappa Delta house at San Jose State. They have two sons and six grandchildren. As a retired educator and school principal, Carol is an active volunteer in the classrooms for her grandchildren.

In 2013, Carol's commitment to NPC was formally recognized when an award was created in her honor for her long-time dedication and leadership in Alumnae Panhellenics.



SUZETTE WALDEN COLE

Suzette is a doctoral candidate in the Department of Education Administration and Foundations at Illinois State University. She serves as a risk management consultant, speaker and trainer helping individuals and organizations realize their potential.

She works as the Director of the Cross Cultural Fraternal Advisors Institute and serves as a consultant and speaker for the Harbor Institute on related topics at conferences and institutions. Prior to this role, Suzette worked at Illinois State University as the Director

of Student Conduct and Conflict Resolution. She was instrumental in overhauling Illinois State's student organization and conduct process, now a premiere model in the field.

In March 2014, she developed Sexual Misconduct and Hazing Prevention educational programming for the Fraternal Health and Safety Initiative. Suzette was appointed lead consultant for the initiative and served as lead author for the sorority version of the program, while also creating and designing the *Live Your Oath* video and campaign launched jointly by Sigma Phi Epsilon and Alpha Delta Pi.



CONVENTION SPEAKERS



JESSICA GENDRON WILLIAMS

Jessica is CEO of a family of companies specializing in helping fraternities and sororities grow: Phired Up, Innova and TechniPhi. In her more than eight years working for Phired Up and more than 12 years working with fraternities and sororities, she's led a movement to make sorority and fraternity Recruitment more values-based and relationship-focused. Jessica has shared those messages with tens of thousands of fraternity and sorority members from across the country, and she's pushing our organizations to be better—everyday.

She has authored two books, *I Heart Recruitment: The Eight Steps to Limitless Possibility for Sororities* and *Social Excellence: We Dare You*. Jessica has a bachelor's in graphic design from Eastern Illinois University where she was a member of Alpha Sigma Tau and a master's in higher education from Indiana University-Bloomington. When she is not busy running Phired Up and her other business ventures, Jessica volunteers her time with St. Jude Children's Research Hospital and loves to run, drink lots of coffee and cuddle with her dogs. She lives in Noblesville, Ind., with her husband, Ben, daughter, Emery, and dogs, Maximus and Brutus. Jessica is passionate about Greek life because she believes that fraternities and sororities change the world for the better.



FOUNDATION INFORMATION

KKGx FOUNDATION LUNCHEON *Bayside Pavilion*

THURSDAY, JUNE 23

12:30 p.m.–2:00 p.m.

Ready to be Kappa Inspired, feel the love and hear ideals worth spreading? Join us at the Kappa Kappa Gamma Foundation's TEDx-themed luncheon to hear personal stories and testimonies that demonstrate how our sisterhood, with the help of the Foundation, provides strength to our Kappa family by providing a lifetime of learning, support and loyalty.

FLEUREVER FLEXIBLE YOGA *Nautilus Foyer*

SATURDAY, JUNE 25

6:30 a.m.–7:00 a.m.; 7:15 a.m.–7:45 a.m.

You have two chances to catch the Founders stretching it out in the spirit of Kappas helping Kappas. Be a part of the very first Foundation-sponsored yoga sessions! Enjoy some movement and relaxation with your Kappa sisters and start your morning with joy, knowing your \$30 donation to participate helps the Foundation invest in every Kappa. You've never taken a yoga class before? No worries, first-timers are encouraged to join, as this will be a class that is accessible to all levels and ages. Too early for you? Choose the sleep-in option instead! Every registrant will receive a free, foldable Kappa Foundation travel yoga mat. Registration and mat pickup is available through Friday, June 24 at the Foundation Tribute Table.

FOUNDATION TRIBUTE TABLE *Grande Foyer*

WEDNESDAY, JUNE 22

9:00 a.m.–10:00 p.m.

THURSDAY, JUNE 23

7:00 a.m.–10:00 p.m.

FRIDAY, JUNE 24

7:00 a.m.–10:00 p.m.

SATURDAY, JUNE 25

7:00 a.m.–8:00 p.m.

The Tribute Table is a special opportunity to honor Kappa sisters and to support the important work of the Foundation. We are Kappa Inspired to meet our goal of \$100,000 to support GIRLS Academy, scholarships, Kappa heritage, etc. With your gift, you will receive tribute cards, which are a wonderful way to tell a friend or mentor "you mean a lot to me" or "thank you." Come and visit the Tribute Table during the hours listed. (Tributes are \$10 each*, three for \$25, 12 for \$100 or as many as you want for \$1,000!) All gifts are tax deductible.

*Special pricing is available for undergraduates

FOUNDATION INFORMATION

HERITAGE EXHIBIT *Seabreeze*

Explore Kappa Kappa Gamma's heritage, view objects from our past and experience the future that eventually will be a part of our history. Members of the Museums Committee and the Archivist/Museum Director will greet visitors, answer questions and share items from The Stewart House, The Heritage Museum and Kappa Kappa Gamma's archives.

TRADITION OF LEADERSHIP® EXHIBIT *Harbor Island Foyer*

The Foundation Museums Committee presents the exciting continuation of the *Tradition of Leadership®* exhibit series with *Enfranchisement to Employment, 1920–1970*. Journey through time from the passage of the 19th Amendment, when women achieved the right to vote, to the entrance of women into the workplace. The first exhibit, *Education to Enfranchisement, 1870–1920*, will also be on display. Smithsonian Curator Emerita and Foundation Museums Committee member Edith P. Mayo, *George Washington*, brings to life the leaders of Kappa Kappa Gamma who were also on the forefront of pivotal social issues.

The Heritage and Tradition of Leadership® exhibits* will be on display for the entire Convention during the following hours:

WEDNESDAY, JUNE 22

4:00 p.m.–6:00 p.m.

THURSDAY, JUNE 23

11:00 a.m.–6:00 p.m.

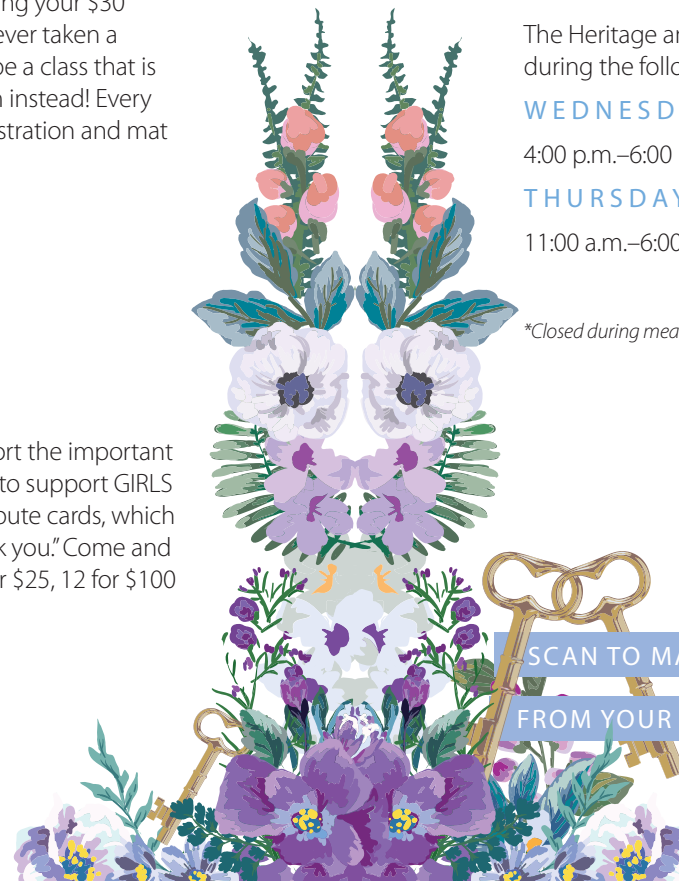
FRIDAY, JUNE 24

9:00 a.m.–5:00 p.m.

SATURDAY, JUNE 25

8:00 a.m.–2:00 p.m.

*Closed during meals



SCAN TO MAKE YOUR KAPPA INSPIRED GIFT

FROM YOUR MOBILE DEVICE



2016 GENERAL CONVENTION RULES

1. REGISTRATION

All members shall be registered before being admitted to the business meetings and educational sessions.

2. CREDENTIALS

- The Credentials and Registration Committees shall provide identification badges for delegates, alternates, non-voting members and guests upon registration.
- Identification badges shall be worn for admission to Convention Hall, all meetings, meals and educational sessions.
- The Credentials Committee shall report at the first business meeting, after the opening ceremonies, the number of delegates registered and entitled to vote and shall make supplementary reports as needed.

3. MEETINGS

All meetings shall be open to all members of the Fraternity.

4. DELEGATE RESPONSIBILITY

- Each delegate and representative of a chapter Advisory Board shall remain for the entire period of General Convention and shall be present at all business meetings. In case it becomes impossible for her to do so, an accredited alternate shall take her place (Fraternity *Standing Rules*, Rule V.). The delegate shall report to the Registration Desk to make this request.
- Delegates shall report to their chapters and associations after Convention.

5. MOTIONS

- The privilege of presenting motions shall be limited to those members entitled to vote, as provided in the Fraternity *Bylaws*, Article V., Section 3., A.
- Main motions or resolutions proposed by Fraternity Council or Standing Committees shall be presented directly to the Convention.
- Original main motions or resolutions proposed by an individual member shall be in writing, signed by the maker and seconder, each of whom shall be a voting member of the Convention, and shall be submitted directly to the Resolutions Committee.
- All amendments shall be submitted in writing on the official motion form and forwarded to the Chair by Pages immediately after being proposed. The signature of the maker and the seconder presenting the amendment and her Convention status must be included on the form.
- Official motion forms may be obtained from the Kappa Koncierge desk or from the Pages.

2016 GENERAL CONVENTION RULES

6. RESOLUTIONS COMMITTEE

- The Resolutions Committee shall prepare suitable resolutions to carry into effect motions or resolutions referred to it and shall submit to the Convention, with the Committee's own recommendation as to appropriate action, these and all other resolutions referred to the Committee, except questions that the Committee, by a three-fourths vote, may decide not to report.
- The Convention, by a two-thirds vote, may overrule a Committee decision not to report.
- Each member who proposes a main motion or resolution shall be given an opportunity to explain it to the Resolutions Committee.
- All motions or resolutions must be submitted to the Resolutions Committee no later than 4:00 p.m. on Friday, June 24, 2016.

7. DEBATE

- A voting member wishing to speak shall approach the microphone, address the Chair, and when recognized by the Chair, give her name and Convention status.
- Debates shall be limited to three minutes for each speaker. No member shall speak more than once on the same question until all have spoken who wish to do so.
- Non-voting members of the Convention may have the privilege of speaking at the discretion of the Chair, but have no power to make motions or to vote.



2016 GENERAL CONVENTION RULES

8. VOTING

Voting shall be as provided for in Fraternity *Bylaws*, Article V., Section 3, A. through C.

- a. Fraternity Council members, the National Panhellenic Conference Delegate, Regional Directors, Province Directors, Chairmen of Fraternity Standing Committees, retiring Leadership Consultants and delegates from chapters shall each be entitled to one vote.
- b. Delegates from alumnae associations shall each be entitled to one vote, except that the total value of their vote shall not exceed the number of chapter delegates registered. The value of each alumnae association delegate's vote shall be established with each report of the Credentials Committee.
- c. All voting shall be in person.
- d. An individual shall cast only one vote.
- e. Each delegate shall be free to vote according to her best judgment on any questions presented at Convention.
- f. A majority of votes of those members present at a meeting and voting shall control in all cases, except where otherwise specifically provided.

9. NOMINATIONS

After the report of the Nominating Committee, nominations from the floor may be made provided that consent of the nominees has been obtained.

10. COMMUNICATIONS

All messages within the Convention Hall shall be delivered by Pages.

11. CAMERAS

Cameras are prohibited during the use of ritual.

12. ELECTRONIC EQUIPMENT

Audio and visual recording equipment, other than that sanctioned for official use, shall be prohibited in all meetings and educational sessions. The use of cell phones and other devices during formal meetings and educational sessions is limited to official Fraternity business needs. All attendees are asked to keep devices on silent during all meetings and educational sessions.

13. FOOD/DRINK

There shall be no food or drink in business meetings and educational sessions.

2016 GENERAL CONVENTION RULES

14. SMOKING

The usage of e-cigarettes or tobacco products is prohibited during meetings, educational sessions and meals.

15. MINUTES

The minutes of General Convention shall be approved by Fraternity Council at the January Council meeting following Convention.

16. PARLIAMENTARY AUTHORITY

The rules contained in the current edition of *Robert's Rules of Order Newly Revised* shall govern the Convention in all cases to which they are applicable and in which they are not inconsistent with the Fraternity *Bylaws* and *Standing Rules* and the 2016 General Convention Standing Rules.



SCHEDULE OF EVENTS

WEDNESDAY, JUNE 22, 2016

9:00 a.m.– 10:00 p.m.	<i>Bayview Foyer</i>	KAPPA REGISTRATION OPEN
	<i>Grande Foyer</i>	FOUNDATION TRIBUTE TABLE OPEN
1:00 p.m.– 6:00 p.m.	<i>Spinnaker</i>	BLUE OWL BOUTIQUE DROP OFF ITEMS
2:00 p.m.– 7:00 p.m.	<i>Harbor Island 3</i>	MARKETPLACE OPEN Visit and shop at Kappa-licensed vendors.
2:30 p.m.– 3:45 p.m.	<i>Marina 6</i>	ROBE PICKUP
3:45 p.m.– 5:45 p.m.	<i>Convention Hall, Grande Ballroom</i>	CONVENTION CHOIR REHEARSAL The Convention Choir performs throughout Convention. Any non-voting member is welcome to attend this rehearsal and be part of the choir.
4:00 p.m.– 6:00 p.m.	<i>Seabreeze, Harbor Island Foyer</i>	HERITAGE EXHIBIT TRADITION OF LEADERSHIP® EXHIBIT
6:30 p.m.– 7:00 p.m.	<i>Nautilus Foyer</i>	CHAPTER DELEGATES - PARADE OF FLAGS BRIEFING
DINNER		
7:00 p.m.– 9:00 p.m.	<i>Kappa Dining, Bayside Pavilion</i>	WELCOME DINNER PARADE OF FLAGS ORIENTATION TO CONVENTION Elizabeth Bailey, Fraternity Vice President Lara Miller, General Convention Chairman <i>Open Seating. Reserved tables for Nominating Committee</i>
8:45 p.m.– 9:30 p.m.	<i>Bayside Pavilion Patio</i>	DESSERT RECEPTION <i>Sponsored by Herff Jones</i>
9:30 p.m.– 10:15 p.m.	<i>Convention Hall, Grande Ballroom</i>	CONVENTION CHOIR REHEARSAL



SCHEDULE OF EVENTS

THURSDAY, JUNE 23, 2016

7:00 a.m.– 10:00 p.m.	<i>Grande Foyer</i>	FOUNDATION TRIBUTE TABLE OPEN		
BREAKFAST				
7:00 a.m.– 8:30 a.m.	<i>Kappa Dining, Bayside Pavilion</i>	CONTINENTAL BREAKFAST		
7:00 a.m.– 8:00 a.m.	<i>Executive 2A and 2B</i>	ORDER OF THE OWL BREAKFAST A breakfast for current and former Field Representatives		
7:30 a.m.– 8:30 a.m.	<i>Marina 1</i>	BREAKFAST FOR "FRIENDS OF THE MUSEUMS" <i>By invitation</i>		
TRAVEL TIME				
8:30 a.m.– 9:00 a.m.	<i>Nautilus Foyer</i>	FORMATION OF PROCESSIONAL Fraternity Council, National Panhellenic Delegate, Regional Council, Associate Council, Flag Bearers		
8:45 a.m.– 9:00 a.m.	<i>Convention Hall, Grande Ballroom</i>	CONVENTION BODY ENTER AND BE SEATED <i>White attire required; chapter delegates seated in front by province.</i>		
9:00 a.m.– 11:00 a.m.	<i>Convention Hall, Grande Ballroom</i>	OPENING BUSINESS MEETING		
TRAVEL TIME				
11:00 a.m.– 6:00 p.m.	<i>Seabreeze, Harbor Island Foyer</i>	HERITAGE EXHIBIT TRADITION OF LEADERSHIP® EXHIBIT		
11:00 a.m.– 7:00 p.m.	<i>Spinnaker</i>	BLUE OWL BOUTIQUE OPEN		
11:00 a.m.– 7:00 p.m.	<i>Harbor Island 3</i>	MARKETPLACE OPEN Visit and shop at Kappa-licensed vendors.		
EDUCATIONAL SESSIONS				
11:15 a.m.– 12:15 p.m.	COLLEGIAN	ALUMNAE	ADVISORY BOARDS/ HOUSE BOARDS	GENERAL
	ADDRESSING MENTAL AND EMOTIONAL HEALTH NEEDS <i>Harbor Island 2</i>	BEING PRESENT ON SOCIAL MEDIA: ALUMNA EDITION <i>Executive 3A and 3B</i>	IT'S A BALANCING ACT: CHAPTER AND UNIVERSITY REQUIREMENTS <i>Nautilus 1</i>	BYLAWS FORUM <i>Marina 2</i>
	HOW TO HELP YOUR CHAPTER BE #KKGNIUS <i>Marina 3</i>	HELPING CHAPTERS PLAN A RISK-FREE EVENT <i>Nautilus 4</i>	INSURANCE 101 <i>Marina 6</i>	READY, SET, GO!: IMPLEMENTING THE PROPOSED ORGANIZATIONAL STRUCTURE <i>Nautilus 3</i>
	UNDERSTANDING CHAPTER FINANCES AND BUDGETS <i>Nautilus 2</i>	RITUAL 101: ALUMNAE ASSOCIATION STYLE <i>Executive 2A and 2B</i>		WHITE GLOVE EXHIBIT TOUR <i>Seabreeze</i>

SCHEDULE OF EVENTS

THURSDAY, JUNE 23, 2016

12:30 p.m.– 2:00 p.m.	<i>Kappa Dining, Bayside Pavilion</i>	KKGx FOUNDATION LUNCHEON <i>Open Seating</i>
TRAVEL TIME		
2:15 p.m.– 3:15 p.m.	<i>Harbor Island 1 and 2</i>	MODEL INITIATION Initiated members are encouraged to attend a model Initiation using the Combined Service. <i>Please enter in silence. Seating is limited.</i>
3:30 p.m.– 5:30 p.m.	<i>Convention Hall, Grande Ballroom</i>	AFTERNOON BUSINESS MEETING <i>Chapter delegates seated in front by province.</i>
COMMITTEE MEETINGS		
5:45 p.m.– 6:15 p.m.	<i>Marina 3</i>	COURTESY RESOLUTIONS COMMITTEE
	<i>Room 511</i>	ELECTION COMMITTEE
	<i>Nautilus 1</i>	RESOLUTIONS COMMITTEE
5:45 p.m.– 6:30 p.m.	<i>Convention Hall, Grande Ballroom</i>	CONVENTION CHOIR REHEARSAL
DINNER		
7:00 p.m.– 9:00 p.m.	<i>Kappa Dining, Bayside Pavilion</i>	PRESIDENTS DINNER After dinner, greet the Fraternity Presidents on the Grande Terrace. <i>Open Seating</i>
TRAVEL TIME		
9:00 p.m.– 9:45 p.m.	<i>Convention Hall, Grande Ballroom</i>	CONVENTION CHOIR REHEARSAL
9:00 p.m.– 10:30 p.m.	<i>Nautilus 2 and 3</i>	FLEUR. COLLEGIATE LOUNGE AND SISTERHOOD EVENT Ready for a night of mingling and sisterhood? Spend the evening getting to know other collegians at our Kappa lounge. The night will include music and an opportunity to hang out with undergraduates from all over the continent.



SCHEDULE OF EVENTS

THURSDAY, JUNE 23, 2016

9:00 p.m.– 10:30 p.m.	<i>Harbor Island 2</i>	SAPPHIRE ALUMNA SOCIAL Please join us for an evening of mingling and sisterhood with alumnae from around the globe! Capture the fun from the night with special props and backgrounds for photos, while enjoying a variety of music and connecting with your sisters.
9:00 p.m.– 10:30 p.m.	<i>Spinnaker</i>	BLUE OWL BOUTIQUE OPEN
COMMITTEE MEETINGS		
9:30 p.m.– 11:00 p.m.	<i>Marina 3</i>	COURTESY RESOLUTIONS COMMITTEE
	<i>Room 511</i>	ELECTION COMMITTEE
	<i>Nautilus 1</i>	RESOLUTIONS COMMITTEE



SCHEDULE OF EVENTS

FRIDAY, JUNE 24, 2016

7:00 a.m.– 10:00 p.m.	Grande Foyer	FOUNDATION TRIBUTE TABLE OPEN
BREAKFAST		
7:00 a.m.– 8:45 a.m.	Kappa Dining, Bayside Pavilion	CONTINENTAL BREAKFAST
TRAVEL TIME		
7:30 a.m.– 8:15 a.m.	Harbor Island 1, 2 and 3	MEMORIAL SERVICE <i>White attire required. A service held in memory of members who have died in the last biennium. Please enter in silence.</i>
TRAVEL TIME		
9:00 a.m.– 11:00 a.m.	Convention Hall, Grande Ballroom	BUSINESS MEETING <i>Association delegates seated in front by province.</i>
9:00 a.m.– 5:00 p.m.	Seabreeze, Harbor Island Foyer	HERITAGE EXHIBIT TRADITION OF LEADERSHIP® EXHIBIT
11:00 a.m.– 6:00 p.m.	Spinnaker	BLUE OWL BOUTIQUE OPEN
TRAVEL TIME		
11:15 a.m.– 1:15 p.m.	Nautilus Foyer	VOTING
KEYNOTE ADDRESS		
11:30 a.m.– 12:30 p.m.	Convention Hall, Grande Ballroom	THE CHANGING FACE OF SORORITIES Phired Up
LUNCH		
12:30 p.m.– 1:30 p.m.	Kappa Dining, Bayside Pavilion	BOX LUNCH PICKUP Enjoy a box lunch in the location of your choice.
TRAVEL TIME		

SCHEDULE OF EVENTS

FRIDAY, JUNE 24, 2016

EDUCATIONAL SESSIONS				
	COLLEGIAN	ALUMNAE	ADVISORY BOARDS/ HOUSE BOARDS	GENERAL
1:45 p.m.– 2:45 p.m.	CHAPTER OFFICER INTERACTS: MARSHAL, MEMBERSHIP, NEW MEMBER <i>Executive 2A</i>	BUILDING ENGAGING PROGRAMMING FOR YOUR MEMBERS <i>Marina 3</i>	FINANCING FOR THE FUTURE <i>Executive 3A and 3B</i>	FINANCE FORUM <i>Marina 6</i>
	RECORDING SECRETARY, CORRESPONDING SECRETARY, REGISTRAR, VP- ORGANIZATION <i>Executive 2B</i>	CAMPUSES AND TRADITIONS: TRENDS IN GREEK COMMUNITIES <i>Nautilus 3</i>		SEARCHING KAPPA DOCUMENTS <i>Nautilus 4</i>
	EVENT, RISK MANAGEMENT, VP-STANDARDS <i>Harbor Island 3</i>			
	TREASURER <i>514</i>	EXPLORING THE WORLD OF REPORTING AND DIGITAL RESOURCES <i>Nautilus 2</i>		
	EDUCATION, VP-ACADEMIC EXCELLENCE, HOUSE, PUBLIC RELATIONS, PANHELLENIC, PHILANTHROPY <i>Nautilus Foyer</i>			THE ART OF GRACIOUSNESS <i>Marina 2</i>
	PRESIDENT <i>Catalina</i>			
	TRAVEL TIME			



SCHEDULE OF EVENTS

FRIDAY, JUNE 24, 2016

EDUCATIONAL SESSIONS				
	COLLEGIAN	ALUMNAE	ADVISORY BOARDS/ HOUSE BOARDS	GENERAL
3:00 p.m.– 4:00 p.m.	KEYNOTE ADDRESS: BE A STORYTELLER, NOT A SALES- WOMAN <i>Harbor Island 1 and 2</i>	BUILDING YOUR LEADERSHIP POOL <i>Nautilus 2</i>	BUILDING A TEAM: WE'RE ALL IN THIS TOGETHER <i>Marina 2</i>	JAILED FOR FREEDOM: AMELIA HIMES WALKER, SWARTHMORE, AND THE QUEST FOR WOMEN'S RIGHTS <i>Nautilus 4</i>
		SKILLFULLY MANAGING ASSOCIATION FINANCES <i>Nautilus 1</i>	IDENTIFYING RISKY SITUATIONS: WHO DO YOU CALL? <i>Executive 2A and 2B</i>	PROFESSIONAL DEVELOPMENT FOR PROFESSIONAL KAPPAS <i>Nautilus 3</i>
		TODAY'S RECRUITMENT BEST PRACTICES <i>Harbor Island 3</i>	NEED A NEW CHAPTER HOUSE? LET'S DISCUSS EDUCATIONAL AREA GRANTS <i>Marina 6</i>	WHAT'S YOUR TRUE COLOR? EXPLORING COMMUNICATION STYLES <i>Executive 3A and 3B</i>
TRAVEL TIME				
EDUCATIONAL SESSIONS				
	COLLEGIAN	ALUMNAE	GENERAL	
4:15 p.m.– 5:15 p.m.	PLANNING A SUCCESSFUL RISK-FREE EVENT! <i>Nautilus 1</i>	WORKING WITH AND RECRUITING THE NEXT GENERATION <i>Harbor Island 1 and 2</i>	ARE YOU KAPPA FAMOUS? <i>Marina 6</i>	
	STANDARDS: THE DOs AND DON'Ts <i>Nautilus 4</i>		BREAKING THE ICE <i>Executive 3A and 3B</i>	
	THE NUTS AND BOLTS OF MEMBERSHIP RECRUITMENT SELECTION <i>Harbor Island 3</i>	UNDERSTANDING THE ROLE OF THE PANHELLENIC DELEGATE <i>Nautilus 3</i>	MAKING "CENTS" OUT OF THE DOLLARS: FINANCIAL ASSISTANCE <i>Marina 2</i>	
			PAST, PRESENT AND FUTURE: UNDERSTANDING INTERGENERATIONAL COMMUNICATION <i>Nautilus 2</i>	
TRAVEL TIME				
5:00 p.m.– 6:15 p.m.	<i>Catalina</i>	FOUNDATION DONOR RECEPTION <i>By invitation</i>		

SCHEDULE OF EVENTS

FRIDAY, JUNE 24, 2016

5:30 p.m.– 6:00 p.m.	<i>Convention Hall, Grande Ballroom</i>	CONVENTION CHOIR REHEARSAL
5:30 p.m.– 6:00 p.m.	ASSOCIATION GATHERINGS	
	<i>Marina 2</i>	GOLDEN KEY
5:30 p.m.– 6:15 p.m.	COMMITTEE MEETINGS	
	<i>Marina 3</i>	COURTESY RESOLUTIONS COMMITTEE
	<i>Room 511</i>	ELECTION COMMITTEE
	<i>Nautilus 1</i>	RESOLUTIONS COMMITTEE
DINNER		
7:00 p.m.– 9:30 p.m.	<i>Kappa Dining, Bayside Pavilion</i>	CELEBRATION OF EXCELLENCE DINNER Kimberly Connell, Director of Alumnae Suzanne Dalton, Director of Chapters Honoring alumnae associations and chapters for outstanding achievement during the biennium. <i>Open Seating</i>
8:30 p.m.– 11:00 p.m.	<i>Spinnaker</i>	BLUE OWL BOUTIQUE OPEN Shop 'til You Drop. The boutique is open late!



SCHEDULE OF EVENTS

SATURDAY, JUNE 25, 2016

7:00 a.m.– 8:00 p.m.	Grande Foyer	FOUNDATION TRIBUTE TABLE OPEN
BREAKFAST		
6:15 a.m.– 8:45 a.m.	Kappa Dining, Bayside Pavilion	CONTINENTAL BREAKFAST
7:30 a.m.– 8:30 a.m.	Harbor Island 3	HABITEERS BREAKFAST A meal for those who have attended five or more Conventions. Pre-registration required.
MORNING EVENTS		
6:30 a.m.– 7:00 a.m.	Nautilus Foyer	FLEUREVER FLEXIBLE YOGA SESSION 1
7:15 a.m.– 7:45 a.m.	Nautilus Foyer	FLEUREVER FLEXIBLE YOGA SESSION 2
TRAVEL TIME		
8:00 a.m.– 2:00 p.m.	Seabreeze, Harbor Island Foyer	HERITAGE EXHIBIT TRADITION OF LEADERSHIP® EXHIBIT
8:45 a.m.– 11:00 a.m.	Convention Hall, Grande Ballroom	BUSINESS MEETING 2016 Fraternity Alumnae Achievement Award Presentation. We celebrate the vast accomplishments of these remarkable women. A panel discussion will be led by J.J. Wales, Fraternity President, 1992–1996. Association delegates seated in front by province.
9:00 a.m.– 1:00 p.m.	Spinnaker	BLUE OWL BOUTIQUE OPEN
TRAVEL TIME		



SCHEDULE OF EVENTS

SATURDAY, JUNE 25, 2016

EDUCATIONAL SESSIONS				
11:15 a.m.– 12:15 p.m.	COLLEGIAN	ALUMNAE	ADVISORY BOARDS/ HOUSE BOARDS	GENERAL
	ACADEMIC EXCELLENCE: A KAPPA VALUE AND PRIORITY <i>Nautilus 3</i>	ALUMNA INTERACTS: ASSOCIATIONS LESS THAN 60 <i>Harbor Island 1</i>	ADVISORY BOARD INTERACTS <i>Executive 3A and 3B</i>	CONFIDENCE TO LEAD <i>Nautilus 1</i>
	DISCOVER THE SECRETS BEHIND OUR RITUAL <i>Nautilus 2</i>	ASSOCIATIONS GREATER THAN 60 <i>Harbor Island 2</i>	HOUSE BOARD INTERACTS: HOUSED CHAPTERS <i>Executive 2A</i>	CURATOR'S TOUR: TRADITION OF LEADERSHIP® EXHIBIT <i>Harbor Island Foyer</i>
	PLANNING FOR THE FUTURE <i>Nautilus 4</i>	RECRUITMENT 365: CONTINUOUS OPEN BIDDING <i>Harbor Island 3</i>	UNHOUSED CHAPTERS <i>Executive 2B</i>	POWERFUL VICTORIAN WOMEN <i>Marina 2</i>
TRAVEL TIME				
12:00 p.m.– 12:30 p.m.	Grande Terrace	RECEPTION FOR PANHELLENIC GUESTS <i>By invitation</i>		
LUNCH				
12:30 p.m.– 1:45 p.m.	Kappa Dining, Bayside Pavilion	PANHELLENIC LUNCHEON WIDE AND WISE HUMAN SERVICE Patty Gesell, NPC Delegation, Carol Coordt <i>Reserved tables for: Mothers/Daughters/Grandmothers; Canadian Kappas</i> Open Seating		
TRAVEL TIME				
EDUCATIONAL SESSIONS				
2:00 p.m.– 3:00 p.m.	COLLEGIAN	ALUMNAE	ADVISORY BOARDS/ HOUSE BOARDS	GENERAL
	KEYNOTE ADDRESS: ASPIRING TO A HIGHER IDEAL OF SISTERHOOD: BUILDING A CULTURE OF SAFETY AND SUPPORT SWC SPEAKS <i>Harbor Island 1 and 2</i>	UNCOVER THE POSSIBILITIES OF THE GINSYSTEM <i>Nautilus 4</i>	BY THE BOOKS: BUILDING EFFECTIVE HOUSE AND ADVISORY BOARDS <i>Marina 6</i>	BREAKING THE ICE: PART TWO <i>Executive 3A and 3B</i>
		WOMEN WHO KAPPA: VOLUNTEERING OPPORTUNITIES <i>Nautilus 3</i>	FACEBOOK, TWITTER, INSTAGRAM AND MORE! <i>Marina 2</i>	CLICK, ENTER AND SUBMIT: USING KAPPA'S ONLINE REFERENCE SYSTEM <i>Harbor Island 3</i>
				PUBLIC SPEAKING 101 <i>Nautilus 1</i>

SCHEDULE OF EVENTS

SATURDAY, JUNE 25, 2016

TRAVEL TIME			
EDUCATIONAL SESSIONS			
	COLLEGIAN	ALUMNAE	GENERAL
3:15 p.m.– 4:15 p.m.	THE NEW MEMBER PERIOD HAS ENDED: NOW WHAT? <i>Executive 2A and 2B</i>	KEYNOTE ADDRESS: UNDERSTANDING TITLE IX IMPLICATIONS: HOW TO SUPPORT KAPPA WOMEN ON CAMPUS AND BEYOND SWC SPEAKS <i>Harbor Island 1 and 2</i>	COURAGEOUS CONVERSATIONS <i>Nautilus 2</i>
	INTERESTED IN BECOMING A FIELD REPRESENTATIVE? <i>Executive 3A and 3B</i>		THE KEYS TO SUCCESSFUL FUNDRAISING: EVENTS AND BEYOND <i>Nautilus 3</i>
	PARLIAMENTARY PROCEDURE: THE KEYS TO A SUCCESSFUL MEETING <i>Marina 2</i>		WOMEN BEHIND THE BADGE <i>Nautilus 1</i>
	PLANNING, PROMOTING AND EXECUTING A READING IS KEY EVENT <i>Marina 6</i>		YOUR FUTURE: THE EVERY-MEMBER EDUCATION PROGRAM <i>Harbor Island 3</i>
	UNCOVER THE POSSIBILITIES OF THE GINSYSTEM <i>Nautilus 4</i>		
TRAVEL TIME			
4:00 p.m.– 6:30 p.m.	<i>Spinnaker</i>	BLUE OWL BOUTIQUE PICK UP ITEMS	
5:00 p.m.– 6:00 p.m.	<i>Convention Hall, Grande Ballroom</i>	CLOSING BUSINESS MEETING <i>White attire required; chapter delegates seated in front by province.</i>	
6:00 p.m.– 6:45 p.m.	<i>Marina 6</i>	ROBE DROP-OFF	
DINNER			
8:00 p.m.– 10:00 p.m.	<i>Kappa Dining, Bayside Pavilion</i>	CANDLELIGHT BANQUET <i>Amelia McCormick, Toastmistress</i> <i>Open Seating</i>	

SCHEDULE OF EVENTS

SUNDAY, JUNE 26, 2016

Beginning at 4:00 a.m.	<i>Marina Tower Lobby, Bay Tower Lobby</i>	DEPARTURES Departure information will be available beginning on Saturday afternoon at the Kappa Concierge desk. Your opinion matters to us. When you return home, please take time to complete the online Convention survey. A link to this survey will be provided in an email that you will find in your inbox.
-------------------------------	--	---

MARK YOUR CALENDAR

KKΓ
72ND BIENNIAL CONVENTION
JUNE 20–24, 2018
SHERATON DENVER DOWNTOWN HOTEL

SESSION DESCRIPTIONS



ALL-MEMBER EVENTS

Listed in track order

THURSDAY, JUNE 23, 2016

ALL-MEMBER EVENT: MODEL INITIATION

Susanne Vander Heyden

Initiated members are encouraged to attend a model Initiation using the Combined Service. Active members will learn staging and procedures as Beth Black, Fraternity President, officiates over this ceremony. Alumnae will appreciate seeing our Initiation again and affirming Kappa values and ideals.

Please enter in silence. Seating is limited.

FRIDAY, JUNE 24, 2016

KEYNOTE ADDRESS: THE CHANGING FACE OF SORORITIES

Jessica Gendron Williams, Phired Up

College is changing. Sorority life is changing. Kappa Kappa Gamma is changing. There's a new generation of students coming into college. There's a new generation of Americans coming to college. There's increasing pressure on sororities (and fraternities) to be better than we've ever been. These changes have the power to dramatically change the face of sororities—and they likely will. What will sorority life look like in five years? What will Kappa look like in the future? How can you be ready for the changes ahead?



SESSION DESCRIPTIONS



BUSINESS MEETINGS

Listed in track order

THURSDAY, JUNE 23, 2016

OPENING BUSINESS MEETING

General Convention Processional

Flag Bearers

American Flag: Jane (Talley) Hodges, *TCU*

Canadian Flag: Stacy Law, *Waterloo*

Associate Council

Regional Council

NPC Flag: Haley Bankson, *Iowa*

NPC Delegate

Fraternity Flag: Grace Buckley, *Colorado*

Fraternity Council

Call to Order: Beth Black, Fraternity President

Opening Ritual

The Star Spangled Banner

O Canada

Today

Kappa Hymn

Devotional: Margaret Ross, *Cincinnati*

In Memoriam

Friends

Welcome New Members

Welcome New Alumnae Associations

Aiken, South Carolina

Greetings

Roll Call

Report of the Credentials Committee

Adoption of the 2016 General Convention Rules

Adoption of the Program

Report of the Fraternity Council Meetings

Appointment of General Convention Committees

Courtesy Resolutions Committee

Election Committee

Resolutions Committee

Introduction of Nominating Committee

Report of the Fraternity President

One Voice

Loyalty Award

AFTERNOON BUSINESS MEETING

Call to Order

Devotional: Kathryn Andrews, *Oklahoma*

Golden Key

Roll Call

Report of the Credentials Committee

Report of the Bylaws Committee



SESSION DESCRIPTIONS



FRIDAY, JUNE 24, 2016

BUSINESS MEETING

Call to Order
Devotional: Terri Hemmelgarn, Dayton Alumnae Association
On the Heart of Each Sister
Roll Call

Report of the Credentials Committee
Report of the Philanthropy Chairman
Report of the Nominating Committee
Report of the Election Committee
Adoption of the Election Rules
Rah! Rah! for Kappa Kappa Gamma

SATURDAY, JUNE 25, 2016

BUSINESS MEETING

Call to Order
Devotional: Cassie Bishop, Hawaii Alumnae Association
One, Two, Three Words
Roll Call
Report of the Credentials Committee
Report on the Biennial Budget
Report of the Election Committee
Report of the Resolutions Committee
KKG's for Me and You
2016 Fraternity Alumnae Achievement Award Presentation

We celebrate the vast accomplishments of these remarkable women. A panel discussion will be led by J.J. Wales, Fraternity President, 1992–1996.

CLOSING BUSINESS MEETING

Call to Order
Devotional: Piper Shaw, USC
Dream a While of Kappa
Roll Call
Report of the Credentials Committee
Report of the Courtesy Resolutions Committee
Installation of Directors
Susanne Vander Heyden, Ritual Chairman
Kimberly Connell, Director of Alumnae
Suzanne Dalton, Director of Chapters
Installation of Fraternity Council
Susanne Vander Heyden, Ritual Chairman
Hooray for Kappa Gammas
Closing Ritual
Adjournment
Recessional: *We Look to Thee, Kappa Gamma*
Flag Bearers
American Flag: Nancy Smith, Arkansas
Canadian Flag: Annemarie Brissenden, Toronto Alumnae Association
NPC Flag: Emily Fuldner, South Carolina
Fraternity Flag: Rachel Tobler, Arizona



SESSION DESCRIPTIONS



EDUCATIONAL SESSIONS: COLLEGIAN

Listed in track order

THURSDAY, JUNE 23, 2016

ADDRESSING MENTAL AND EMOTIONAL HEALTH NEEDS

Iliana Garcia, Collett Rangitsch and Anna Trout

Join us to learn how to identify mental and emotional concerns while practicing scenarios through case studies.

HOW TO HELP YOUR CHAPTER BE #KKGGENIUS

Angela Disalvo and Mary Pat Rooney

Being S.M.A.R.T. will help improve your chapter's Academic Excellence Program. Come learn the tips and tricks to motivating members academically, improve academic performance and develop S.M.A.R.T. goals that will help you achieve #KKGGenius status.

UNDERSTANDING CHAPTER FINANCES AND BUDGETS

Nancy Foland and Sarah Gipe

Learn how to navigate a chapter budget and understand why member dues fluctuate depending upon member type. In addition, explore Billhighway and the policies that can affect our members.



SESSION DESCRIPTIONS



FRIDAY, JUNE 24, 2016

KEYNOTE ADDRESS: BE A STORYTELLER, NOT A SALESWOMAN

Jessica Gendron Williams, Phired Up

Potential new members don't want a sales pitch; they also don't want facts and figures about how Kappa compares to other sororities. The current generation of students coming to college want to know how joining a sorority will impact them—they want to know how it will make them better, change their lives or even change the world. Sororities can no longer rely on the traditional sales pitch—you've got to paint the picture for them. Through stories, help them see what the Kappa Kappa Gamma experience is all about. Be storytellers, not saleswomen! Learn to precisely tell the story of the Kappa experience to potential new members.

CHAPTER OFFICER INTERACTS

Chapter Team

Join us to discuss chapter problems, reflect on chapter successes and receive feedback from other chapter members through engaging discussion prompts.

PLANNING A SUCCESSFUL RISK-FREE EVENT!

Sam Fetcho

Planning a safe and risk-free event is important to chapter operations! Come learn about basic Fraternity policies and the best event planning practices.

STANDARDS: THE DOs AND DON'Ts

Caity Meehan, Collett Rangitsch and Jenna Wiesner

Explore why the Standards Committee is so important within our organization. Discuss various scenarios and potential solutions while being creative with terms of probation. At the end of this session you will understand all of the resources available to support you and your sisters.

THE NUTS AND BOLTS OF MEMBERSHIP RECRUITMENT SELECTION

Susan Pile and Team

Membership selection sessions should be ethical, fair and efficient. Come learn how to use technology and resources to create a smoother process during membership selection.

UNDERSTANDING THE ROLE OF THE PANHELLENIC DELEGATE

NPC Delegation

Join us to learn more about the role of the Panhellenic Delegate on your campus and the support structure campuses have through the National Panhellenic Conference. Discover new ways chapters can best utilize your Panhellenic Delegate to engage in community-wide discussions.

SESSION DESCRIPTIONS



SATURDAY, JUNE 25, 2016

ACADEMIC EXCELLENCE: A KAPPA VALUE AND PRIORITY

Meredith Perlman and Mary Pat Rooney

Through this session, you will revisit academic excellence requirements, how to incorporate academic excellence into membership recruitment conversations and gain a full understanding between the differences of the Period of Support and Period of Concern process.

DISCOVER THE SECRETS BEHIND OUR RITUAL

Emily Barclay and Denise Rugani

We all know ritual is a secret, but do we know the reasons why? Join us to acquire ideas of how to share ritual with chapter members while also using best practices.

PLANNING FOR THE FUTURE

Angela Disalvo, Ella Gaumer and Alicia Soto

Strategic plans are an integral part of any organization. In this session, discover the importance of goal setting, creating a master calendar and executing successful officer transitions.

RECRUITMENT 365: CONTINUOUS OPEN BIDDING

Susan Pile and Team

Membership Recruitment does not end after the primary recruitment period. Learn the meaning behind Continuous Open Bidding and simple COB practices that will maximize the chapter's time and resources.

KEYNOTE ADDRESS: ASPIRING TO A HIGHER IDEAL OF SISTERHOOD: BUILDING A CULTURE OF SAFETY AND SUPPORT

Suzette Walden Cole, SWC Speaks

Explore present challenges with regards to sexual misconduct and violence on your campus affecting your sisters. Recognize your responsibility as a leader to create a culture of support and learn the techniques and skills for responding and offering support to a sister in need. Engage in a "real-life" scenario dialogue.

This presentation is made possible through a gift to the Kappa Kappa Gamma Foundation by the Warren and Mary Jane Crist Foundation.

THE NEW MEMBER PERIOD HAS ENDED: NOW WHAT?

Brittney Henderson and Missy Osha

Explore the many ways to continue to educate members once their new member period has ended. Utilizing programming within the chapter and staying current with website updates will help keep chapter members engaged with Kappa education initiatives.

SESSION DESCRIPTIONS



INTERESTED IN BECOMING A FIELD REPRESENTATIVE?

Leadership Consultant Team

Explore position descriptions, necessary skills and all of the benefits being a Field Representative provides!

PARLIAMENTARY PROCEDURE: THE KEYS TO A SUCCESSFUL MEETING

Jane Sangalis

Come learn the tips to hosting an effective meeting and the basic practices within parliamentary procedure.

PLANNING, PROMOTING AND EXECUTING A READING IS KEY EVENT

Carol Sanders

During this session you will explore strategies for planning a Reading Is Fundamental event and brainstorm with other Kappas to design the best RIF event for your chapter!

UNCOVER THE POSSIBILITIES OF THE GINSYSTEM

GIN Representative, Libbi Vynalek and Caroline Washnock

Join us to learn more about the public and private sides of a GIN website and the many features that GIN can provide to simplify your communications.



SESSION DESCRIPTIONS



EDUCATIONAL SESSIONS: ALUMNAE

Listed in track order

THURSDAY, JUNE 23, 2016

BEING PRESENT ON SOCIAL MEDIA: ALUMNA EDITION

Kelly Magyarics

Social media is prevalent throughout all aspects of our life. Learn about popular and relevant social media trends, sites and how to increase engagement. Discover how to set up and monitor social media for appropriate postings.

HELPING CHAPTERS PLAN A RISK-FREE EVENT

Sam Fetcho

Planning a safe and risk-free event is important to chapter operations! Understand basic Fraternity policies and best event planning practices, while discovering the role alumnae play in supporting chapters to minimize risk.

RITUAL 101: ALUMNAE ASSOCIATION STYLE

Barb Goettelman and Barb Quilling

During this session, you will review the nuts and bolts of ritual and how to incorporate ritual into your association.

FRIDAY, JUNE 24, 2016

BUILDING ENGAGING PROGRAMMING FOR YOUR MEMBERS

Jennifer Fales, Jenn King and Susan Millsap

Learn about new and creative programming tools to engage alumnae, while aligning programming ideas to meet the intergenerational needs of your association's membership.

CAMPUSES AND TRADITIONS: TRENDS IN GREEK COMMUNITIES

Robyn Brock, Anna Edwards and Kristin Fouts

Have you noticed that campus requirements are becoming more stringent? Gain a greater understanding of university mandates, Title IX and Panhellenic concerns. Spend time with higher education administrators as they cover the top 10 issues facing today's college student.

EXPLORING THE WORLD OF REPORTING AND DIGITAL RESOURCES

Ann Broadwell, Jean Davis and Jane Steiner

Learn about galley, zip codes and age demographics when reviewing alumna reporting in addition to utilizing online officer resources to be successful.

SESSION DESCRIPTIONS



BUILDING YOUR LEADERSHIP POOL

Heather Champagne and Leslie Linebaugh

Learn how to develop alumna talent and lead meetings with purpose, inspiration and direction, while fostering teamwork and inclusion amongst local alumnae.

SKILLFULLY MANAGING ASSOCIATION FINANCES

Amanda Brown, Nancy Foland and Heather Root

Learn best practices for alumna dues collection, explore strategies for utilizing the association budget and year-end report, understand the process to submit dues and a member list to Fraternity Headquarters and more!

TODAY'S RECRUITMENT BEST PRACTICES

Tiff Horton and Susan Pile

Recruitment is an ongoing and evolving process. Learn more about what recruitment processes look like in today's world and recognize the dos and don'ts when supporting Recruitment. Discover how the new reference system makes Recruitment easier!

KEYNOTE ADDRESS: WORKING WITH AND RECRUITING THE NEXT GENERATION

Jessica Gendron Williams, Phired Up

This new generation of college students will need a new approach. They're going to be less likely to join or show interest in joining sororities and, later, alumnae associations. They're going to be more practical. They're going to be more diverse ethnically and socioeconomically. Let's talk in detail about what it will take to recruit, retain, work with and engage the newest generation of college students and new alumna members.

SATURDAY, JUNE 25, 2016

ALUMNA INTERACTS

Alumna Team

Join us to discuss association issues, reflect on association successes and receive feedback from other association members through engaging discussion prompts.

UNCOVER THE POSSIBILITIES OF THE GINSYSTEM

GIN Representative and Nancy Campbell

Learn the ins and outs of the GINsystem including where to find help and training once you leave Convention. Learn how to communicate with other alumna members through announcements, group texting and calendar sharing as well as organize important documents and photos.

SESSION DESCRIPTIONS



WOMEN WHO KAPPA: VOLUNTEERING OPPORTUNITIES

Sarah Bohman and Logan Tootell

Join us to explore the elements of the newly designed Kappa volunteer experience. Come identify your "glad gifts," "yearn to learns" and "no-nos," plus match your talents to a variety of volunteer roles. Learn the necessary time commitment of being a Kappa volunteer and complete the new and updated member profile.

KEYNOTE ADDRESS: UNDERSTANDING TITLE IX IMPLICATIONS: HOW TO SUPPORT KAPPA WOMEN ON CAMPUS AND BEYOND

Suzette Walden Cole, SWC Speaks

Engage in a comprehensive dialogue about the changing dynamics on college campuses with regards to sexual misconduct and violence. Recognize resources to which women are entitled and the support systems available to them. Understand the important role you play as an alumna to reinforce the Kappa educational tools provided to members.

This presentation is made possible through a gift to the Kappa Kappa Gamma Foundation by the Warren and Mary Jane Crist Foundation.



SESSION DESCRIPTIONS



EDUCATIONAL SESSIONS: ADVISORY BOARDS/ HOUSE BOARDS

Listed in track order

THURSDAY, JUNE 23, 2016

IT'S A BALANCING ACT: CHAPTER AND UNIVERSITY REQUIREMENTS

Higher Education Professionals and Vicki Carrigan

Have you noticed that campus requirements are becoming more stringent? Gain a greater understanding of university mandates, Title IX and Panhellenic concerns. Learn how to respond to university requests while balancing organization and member privacy and understand the scope of our NPC responsibilities with regards to university requests.

INSURANCE 101

MJ Insurance and Stacie Neely

You will learn about critical insurance issues facing chapters and House Boards including best practices and trends within the industry.

FRIDAY, JUNE 24, 2016

FINANCING FOR THE FUTURE

Suzanne Giffen, Gretchen Kaufman and Stacie Neely

Being fiscally responsible is how we can assure that our chapters will be set up for success. You will review procedures for determining chapter fees, learn how to set long-term financing schedules and review policies for major fundraising campaigns.

SEARCHING KAPPA DOCUMENTS

Susie Hughes and Denise Rugani

Understanding Fraternity documents will help aid with effective chapter management. During this session, you will gain a better understanding of the Fraternity *Bylaws*, *Standing Rules* and *Policies* and learn where to find answers within the official documents.

BUILDING A TEAM: WE'RE ALL IN THIS TOGETHER

Joanie Cohen, Adrienne Magnuson and Katy Stovall

Recognizing that a team is only as strong as its weakest link is important. Throughout this session you will learn how to effectively work with Chapter Council, help officers set goals, learn how to advise, not supervise, and effectively use the GINsystem.

SESSION DESCRIPTIONS



IDENTIFYING RISKY SITUATIONS: WHO DO YOU CALL?

Sam Fetcho and Collett Rangitsch

Have you ever witnessed a risky situation but haven't known what to do? Not anymore! You will gain the skills necessary to identify the signs of risky behaviors, address those concerns and utilize reporting channels to notify the appropriate person.

NEED A NEW CHAPTER HOUSE? LET'S DISCUSS EDUCATIONAL AREA GRANTS

Gretchen Kaufman

Discover how the Kappa Kappa Gamma Foundation can help. Find out how to determine whether your project is eligible for an Educational Area Grant, complete the application and outline your project with the steps to take to ensure your success.

SATURDAY, JUNE 25, 2016

ADVISORY BOARD INTERACTS

CCS Team

Join us to exchange ideas and issues that Advisory Boards encounter.

HOUSE BOARD INTERACTS: HOUSED CHAPTERS

CCS Team

Join us to exchange ideas and concerns among House Boards with similar housing arrangements.

HOUSE BOARD INTERACTS: UNHOUSED CHAPTERS

CCS Team

Join us to exchange ideas and concerns among House Boards with similar housing arrangements.

BY THE BOOKS: BUILDING EFFECTIVE HOUSE AND ADVISORY BOARDS

April Setliff, Carolyn Simpson and Katy Stovall

Are you trying to build the best board possible? Gain the skills necessary to recruit effective board members, collaborate with the local alumnae association and utilize parliamentary procedure within your operating tactics.

FACEBOOK, TWITTER, INSTAGRAM AND MORE!

Kelly Magyarics and Robyn Rider

Working with the millennial generation can be difficult because of communication barriers. During this session you will gain a greater understanding of the characteristics of the millennial generation, learn about current social media trends and learn how to use alternative communication methods with chapter women.

SESSION DESCRIPTIONS



EDUCATIONAL SESSIONS: GENERAL

Listed in track order

THURSDAY, JUNE 23, 2016

BYLAWS FORUM

Beth Black, Ann Rempel and Denise Rugani

Join us to discuss and ask questions about the proposed amendments to the Fraternity *Bylaws* and *Standing Rules*.

READY, SET, GO!: IMPLEMENTING THE PROPOSED ORGANIZATIONAL STRUCTURE

Sarah Bohman, Carol Sanders and Logan Tootell

Let's learn about the new organizational structure. Understand the timeline of changes and roles of each layer within the new structure and identify all of the resources you have once you depart from Convention.

WHITE GLOVE EXHIBIT TOUR

Meredith Wray

During this interactive session you will go behind the scenes of the museums' exhibits to learn more about what's on display.

FRIDAY, JUNE 24, 2016

FINANCE FORUM

Nancy Foland and Heather Root

Join us to ask questions and discuss the 2016–2018 proposed budget! Discover more about the financial operations of the Fraternity.

GIRL POWER: DISCOVER GIRLS ACADEMY!

Caren Chung and Marla Williams

GIRLS Academy is a rewarding and beneficial experience for middle-school girls, chapters and associations. Learn the requirements to host a GIRLS Academy event and discover what the program entails.

THE ART OF GRACIOUSNESS

Libbi Vynalek and Caroline Washnock

Learn the ins and outs of how to properly host a guest. You will learn to identify the appropriate methods of societal etiquette while making your visitor feel welcome.

SESSION DESCRIPTIONS



JAILED FOR FREEDOM: AMELIA HIMES WALKER, SWARTHMORE, AND THE QUEST FOR WOMEN'S RIGHTS

Lynn Garvey-Hodge

Learn about the history of Kappa feminist and suffragette Amelia Himes Walker. Travel through time and explore the leadership style of Kappa women in the early 20th century, while also examining her commitment to equal rights.

PROFESSIONAL DEVELOPMENT FOR PROFESSIONAL KAPPAS

Sarah Bohman and Jane Sangalis

Unsure of how to act during your next interview? What about negotiations once you land the perfect job? Learn interview etiquette, salary and benefit negotiation and ways to market your skill set.

WHAT'S YOUR TRUE COLOR? EXPLORING COMMUNICATION STYLES

Gail Owen and Marla Williams

Explore your individual communication style through the True Colors Instrument and recognize challenges and strengths within each style.

ARE YOU KAPPA FAMOUS?

Kelly Nylund and Kylie Smith

Join us to become familiar with Kappa's online history resources. Learn how to access information and research specific topics on Kappapedia and in the newly digitized back issues of *The Key*. Find out if you're "Kappa Famous!"

BREAKING THE ICE

Marla Williams

Adding icebreakers, team-building games and energizers to your meeting or event can create a world of fun and promote better organizational connections. Come ready to play!

MAKING "CENTS" OUT OF THE DOLLARS: FINANCIAL ASSISTANCE

Janey Cantwell, Sally Spencer and Kay Weeks

Kappa cares about you. Join us to learn about the Rose McGill financial aid programs, scholarships and how the Kappa Kappa Gamma Foundation can provide financial assistance throughout your membership experience.

PAST, PRESENT AND FUTURE: UNDERSTANDING INTERGENERATIONAL COMMUNICATION

Barb Goettelman

Working with individuals from different generations can be difficult! Come learn how to overcome those challenges by learning more about communication styles and varying needs of each generation.

SESSION DESCRIPTIONS



SATURDAY, JUNE 25, 2016

CONFIDENCE TO LEAD

Jane Sangalis

Having confidence is one of the most important attributes in becoming a leader. Learn about the unique strengths women bring in leadership roles and how to confidently communicate.

CURATOR'S TOUR: TRADITION OF LEADERSHIP® EXHIBIT

Edith Petersilia Mayo

Join us on the journey to examine and explore 100 years of Kappa history in the context of the women's movement. Learn about influential Kappas, Fraternity Presidents and international notables.

POWERFUL VICTORIAN WOMEN

Ritual and History Specialist Team

Which powerful Victorian women are you most like? Come find out during this interactive session where you learn more about six women who demonstrated incredible courage and the lifestyles of women in the late 19th and early 20th century.

THE LATTE FACTOR: FINANCE 101

Peggy Cabaniss

What financial goals could you achieve if you cut out a latte a week? Discover strategies for developing a budget and sticking to it, investing opportunities, managing debt and setting goals.

BREAKING THE ICE: PART TWO

Marla Williams

Missed us the first time or didn't get enough? Join us to learn how adding icebreakers, team-building games and energizers to your meeting or event can equal a world of fun and create better organizational connections. Come ready to play!

CLICK, ENTER AND SUBMIT: USING KAPPA'S ONLINE REFERENCE SYSTEM

Libbi Vynalek and Caroline Washnock

Join us to effectively submit, review and analyze the data chapter members receive for each reference and how to use this in your membership selection process.

PUBLIC SPEAKING 101

Jane Sangalis

Join us to learn how to craft an impactful and organized presentation while effectively using props within your presentation.

SESSION DESCRIPTIONS



COURAGEOUS CONVERSATIONS

Lesley Lage

Communication is key when connecting with all people in a variety of contexts. Learn how to have both tough and easy conversations while also recognizing who might need some extra TLC. Explore the strategies for accountability and confrontation, while keeping an open-mind and working outside of the "norm."

THE KEYS TO SUCCESSFUL FUNDRAISING: EVENTS AND BEYOND

Beth Burkes

Have you ever tried to raise money but don't know how? Come participate in a hands-on experience and learn the best practices to raise funds that work best for your situation and explore successful event fundraising tactics.

WOMEN BEHIND THE BADGE

Stephanie Lou Haymond and Mary Silzel

Interested in learning more about the Keepers of the Key? Come learn about the history of Kappa women rescuing Fraternity badges and how to properly wear your badge.

YOUR FUTURE: THE EVERY-MEMBER EDUCATION PROGRAM

Gail Owen and Marla Williams

Join us to learn all about Kappa's exciting new upcoming Every-Member Education Program. We will discuss the timeline for roll-out, phases of development and inspiring future plans.





CONVENTION CONTRIBUTORS

PARLIAMENTARIAN

ANN L. REMPEL

Ann is both a Professional Registered Parliamentarian and a Certified Professional Parliamentarian-Teacher. She has served the National Association of Parliamentarians as a district director, member of various standing committees, national parliamentarian, editor of NAP's official magazine and chairman of the 2009 special committee on NAP governance structure.

STENOGRAPHER

PAMELA A. GRIFFIN, RPR, CRR, MINNESOTA

Pamela has served as a court reporter since 1983. Griffin & Associates, a full-service court reporting firm founded in 1987 in Phoenix provides a full range of court reporting services to the Valley of the Sun and the world beyond.

MJ INSURANCE

CINDY STELLHORN, SORORITY DIVISION, VICE PRESIDENT

Cindy received her B.S. from Indiana University, where she was actively involved and held several officer positions with Kappa Alpha Theta Fraternity. Choosing a career in the insurance industry, she worked for an insurance company, CIGNA, where she last held the position of Marketing Vice President, before joining MJ Insurance.



SPONSORS



SPONSORS

PLATINUM LEVEL:



HERFF JONES



GREEK YEARBOOK



MJ INSURANCE

The Container Store®

THE CONTAINER STORE

GOLD LEVEL:

Billhighway
Greek Resource Services, Inc.

SILVER LEVEL:

Nationwide

BRONZE LEVEL:

CSI (Computer System Innovations, Inc.)
CSL Management, LLC

ADDITIONAL SPONSORS:

GIN (Group Interactive Networks)

FRATERNITY DIRECTORY

FRATERNITY COUNCIL

President Beth Uphoff Black, *Illinois Wesleyan*
Vice President Elizabeth Bailey, *Mississippi*
Treasurer Nancy Eyermaun Foland, *Tulsa*
Director of Alumnae Kimberly Garrett Connell, *TCU*
Director of Chapters Suzanne Calvin Dalton, *Missouri*
Director of Membership Susan L. Pile, *Miami (Ohio)*
Director of Programs and Education Gail Simpson
Owen, Monmouth
Director of Standards Collett Beers Rangitsch, *Wyoming*

REGIONAL COUNCIL

REGIONAL DIRECTORS OF ALUMNAE

Region 1 Amanda L. Brown, *Puget Sound*
Region 2 Heather Kohli Champagne, *Hillsdale*
Region 3 Leslie Linebaugh, *Tennessee*
Region 4 Susan Jones Millsap, *Texas Tech*
Region 5 Jennifer Beardsley Fales, *Kansas State*
Region 6 Jennifer (Jenn) Haughey King, *Utah*
Region 7 Carol (Ann) Plimpton Broadwell, *USC (Calif.)*

REGIONAL DIRECTORS OF CHAPTERS

Region 1 Alicia Hayden Soto, *Central Florida*
Region 2 Lesley Dillon Lage, *Akron*
Region 3 Meredith Clapp Perlman, *Emory*
Region 4 Katy Stovall, *Drake*
Region 5 Melissa (Missy) Emrich Osha, *Butler*
Region 6 Brittany Henderson, *Puget Sound*
Region 7 Angela Disalvo, *Iowa*

ASSOCIATE COUNCIL

PROVINCE DIRECTORS OF ALUMNAE

Alpha Selene Hur, *Waterloo*
Beta Janis Lloyd Nutini, *Maryland*
Gamma Nancy Paulus Carley, *Illinois*
Delta North Stephanie Rankin, *Michigan*
Delta South Julia (Jules) Schenk, *Butler*
Epsilon North Barbara Gerlinger Quilling, *Wisconsin*
Epsilon South Beverly Hayes, *Miami*
Zeta East Nancy (Nan) Vail, *Kansas State*
Zeta West Judy Hardman Rapp, *Kansas*
Eta East Kelly Bourke Bevilacqua, *Florida State*
Eta West Dorian Light Shaw, *Utah*
Theta East Beverly Burk, *Missouri*

Theta North Mary Ferguson Hendrick, *Oklahoma*
Theta South Lauren Tijerina Temple, *TCU*
Theta West Kerri Allen Chambless, *Texas*
Iota East LaRissa (Lisa) Sheppard DeFors, *Montana*
Iota West Rebecca Armstrong, *Idaho*
Kappa North Caroline (Carrie) Cochran Gommel,
UC Irvine
Kappa South Leti McNeill Light, *Cornell*
Lambda Tania Simonetti Lavin, *South Carolina*
Mu Central Angela Wilhelm, *Florida State*
Mu North Shannon Varn Anderson, *South Carolina*
Mu South Paige Graddy, *South Carolina*
Nu East Kimberly (Kim) Hembree Fewell, *Florida*
Nu West Jill Partridge Wolverton, *New Mexico*
Xi East Hermine McLarty Granberry, *Mississippi*
Xi West Nancy Dennis Campbell, *Florida State*
Pi North Jayne Booker, *Duke*
Pi South Joan Minneman Cannon, *Kansas State*
Rho Leah Bogdan DeCesare, *Syracuse*

PROVINCE DIRECTORS OF CHAPTERS

Alpha Central Nicole Pitsinos, *South Carolina*
Alpha East Elizabeth (Liz) Wong, *Waterloo*
Alpha West Breann (Bree) Peterson Cohn, *USC (Calif.)*
Beta Central Hilary Miller, *Washington & Jefferson*
Beta East Anna Trout, *Pittsburgh*
Beta West Julia Dixon, *Akron*
Gamma North Ann Lorentzen, *Denison*
Gamma South Elizabeth (Libbi) Rettew Vynalek,
Virginia Tech
Delta North Cassidy Kuhlmann, *Valparaiso*
Delta South Allison Clark, *Valparaiso*
Epsilon Central Kathleen Podlipni, *Knox*
Epsilon North Mattea Rainforth, *Iowa State*
Epsilon South Erin Howe, *Illinois Wesleyan*
Zeta North Chelsea Dyer, *Oklahoma State*
Zeta South Krista Meyer, *Missouri*
Zeta West Megan Dorste, *Cal State Northridge*
Eta East Barbara (Barb) Adams Goettelman, *Syracuse*
Eta West Noell Sauer, *New Mexico*
Theta Central Marguerite (Meg) Glover Henderson,
Colorado College
Theta North Emily Douglass Murdock, *Vanderbilt*
Theta South Nancy Netherton Ellison, *Texas*
Iota East Michelle Myers, *Idaho*
Iota West Carrie Hughes Cohen, *Washington State*

Kappa Central Emily Fetcho Barclay, *Butler*
Kappa North Bethany (Lynne) Stanton Whinnem,
Georgia Southern
Kappa South Amanda Eacker Huston, *UC Irvine*
Lambda East Elizabeth (Libby) Weith, *Furman*
Lambda West Catelyn Slattery, *Denison*
Mu Central Anna Newton, *North Carolina*
Mu North Stacey Wilson, *South Carolina*
Mu South Jessica Wood Spears, *Georgia Southern*
Nu East Erin Reinshagen Woods, *Kentucky*
Nu West Whitney Rae Peters Hatcher, *West Virginia*
Xi East Charlotte Rhodes, *SMU*
Xi West Elizabeth (Beth) Washington, *LSU*
Pi Central Emily Langdon, *UC Davis*
Pi North Molly Bechtel, *UC Davis*
Pi South Michelle Arnold Dominguez, *UC San Diego*
Rho North Carmen Crocker Mincy, *Vermont*
Rho South Lexia Nowicki, *Connecticut*

STANDING COMMITTEES

Bylaws Chairman Denise Rugani, *UC Davis*
Chapter Support Chairman Stacie Quinn Neely, *Idaho*
Coordinators of Chapter Support:
 Victoria (Vicki) Hill Carrigan, *UC Riverside*
 Kappa, Pi Central and Pi South Provinces
 Joan (Joanie) Cook Cohen, *Colorado*
 Eta, Iota and Pi North Provinces
 Mary (Susie) Eynatten Hughes, *Missouri*
 Epsilon and Zeta Provinces
 Adrienne Taylor Magnuson, *West Virginia*
 Beta and Lambda Provinces
 Keri Russo Procko, *Connecticut*
 Alpha and Rho Provinces
 Robyn Schwartz Rider, *Cincinnati*
 Gamma and Delta Provinces
 April Palombo Setliff, *LSU*
 Mu and Xi Provinces
 Carolyn Byrd Simpson, *Texas Tech*
 Theta and Nu Provinces
Extension Chairman Lauren Nogy, *UC San Diego*
Field Representatives Chairman Mary Holland Belvin,
Tennessee
Finance Chairman Margaret (Peggy) Scanlon Cabaniss,
Arizona

FRATERNITY DIRECTORY

Committee:

Jocelyn (Jodie) Bushey, *Vermont*
 Nancy Garrett Gerseny, *Allegheny*
 Cynthia (Cindy) Solms Hughes, *Purdue*
 Nancy Naus King, *Miami (Ohio)*
 Stacie Quinn Neely, *Idaho*
Ex Officio Beth Uphoff Black, *Illinois Wesleyan*
Ex Officio Nancy Eyermaun Foland, *Tulsa*
Ex Officio Suzanne House Giffen, *Allegheny*
General Convention Chairman Lara Meinheit Miller,
Illinois
History Chairman Kelly Fowler Nylund, *Virginia Tech*
The Key Publication Chairman Judy Stewart Ducate,
Texas Tech
Vice President Elizabeth Bailey, *Mississippi*
Editor Kristin Johnson Sangid, *Georgia Southern*
Associate Editor Kristen Desmond LeFevre, *Indiana*
Contributing Writer/Editors:
 Melisse Campbell, *Mississippi*
 Lucy First Gerlach, *DePauw*
 Leanne Aurich Matullo, *Pittsburgh*
 SommerAnn McCullough, *Denison*
 Jodi Noding, *Florida*
 Kaitlyn (Kait) Smith, *Marist*
Panhellenic Affairs
National Panhellenic Conference Delegate
 Patricia (Patty) Coffee Gesell, *Penn State*
First Alternate Robyn Oates Brock, *Tennessee*
Second Alternate Anna Corpening Edwards, *Clemson*
Third Alternate Kristin Whitver Fouts, *Monmouth*
Public Relations Chairman Kelly Matyas Magyarics,
Pittsburgh
Publications Chairman Stacy Underwood Bjarnason,
Washington
Copy Editor Margaret (Elaine) Perett Hanner, *Tulsa*
Copy Editor Kay Smith Larson, *Washington*
Copy Editor Hannah Meehan, *Utah*
Copy Editor Alison Talcott (Ohio University)
Ritual Chairman Susanne Wolf Vander Heyden,
Washington State

FRATERNITY DIRECTORY

SPECIAL COMMITTEES

Education Chairman Caren Nitschke Chung, *DePauw*
Kappa Travels Chairman Julie Marine Leshay,
Colorado College

Long-Range Planning Chairman Logan Krogh Tootell,
UCLA

Nominating Chairman Jill Eversole Nolan, *Ohio State*

Nominating Vice Chairman Jennifer Williams, *Drake*

Philanthropy Chairman Carol George Sanders,
Cal State Northridge

Risk Management Chairman Sandra (Sam) Laich Fetcho,
Illinois Wesleyan

Region 1 Patricia Murphy Coulter, *Carnegie Mellon*

Region 2 Claire St.Martin Collins, *Emory*

Region 3 Jennifer (Jenn) Pfeifer Pfeifer-Malaney,
Simpson

Region 4 Caroline Cobb Morgan, *Texas Tech*

Region 5 Hilary Hawkinson, *Monmouth*

Region 6 Katie Stilwell Bloodworth, *Arkansas*

Region 7 Lesly Gibbs Stern, *New Mexico*

Sesquicentennial Chairman Vacant

Assistant Denise Rugani, *UC Davis*

Technology Chairman Candace Cook Shaw,
Oklahoma State

ASSISTANTS TO THE FRATERNITY COUNCIL

Assistant to President Sarah (Sally) Seigfreid Harner,
Missouri

Assistant to NPC Delegation Margaret (Carolyn)
 McFarland Hunter, *Utah*

Greek Housing Chairman Suzanne House Giffen,
Allegheny

House Boards Building/Remodeling Gretchen Kaufman,
Arkansas

Owl Out On a Limb Mary (Caroline) Poole Cameron,
Florida State

Assistant to Director of Alumnae Amanda Compton
 Ruffo, *UC Irvine*

Assistant to Director of Chapters Ella Gaumer Vieira, *UC
 Riverside*

Academic Excellence Mary (Mary Pat) Rooney, *Drake*
Assistant to Director of Membership Tiffany (Tiff)
 Pannier Hortin, *Lawrence*

Regions 1, 2, 3 and Xi West and Zeta South Provinces
 Caitlin (Caity) Meehan, *Miami*

Regions 5, 6, 7 and Theta Province Jenna Ciccirelli
 Wiesner, *Iowa*

COORDINATORS OF CHAPTER DEVELOPMENT

Alabama Madeline Martin, *Clemson*

Cal Poly San Luis Obispo Jacey Kessen Kunka, *Miami
 (Ohio)*

Chapman Kylee Garton, *UCLA*

Elmhurst Ann Moenius, *Nebraska*

Georgetown Cori Egnew Woods, *Richmond*

Illinois Kristi Norris, *Tulsa*

Iowa Meghan (Meggie) Centers, *Iowa*

Northwestern Andrea Powers Robertson, *Lawrence*

NC State Eileen Marin Coombes, *Central Florida*

St. Lawrence Lindsey Steller, *Kentucky*

Wake Forest Stacy Rickwald Gilfert, *Centre*

Washington and Lee Riley Shipman, *South Carolina*

Wichita State Risa Pierce Flanders, *Kansas State*

FIELD REPRESENTATIVES

CHAPTER CONSULTANTS 2015–2016

Jessica Sitton, *Oregon*

LEADERSHIP CONSULTANTS 2015–2016

Alyssa Bernauer, *Santa Clara*

Ariel Blandford, *USC (Calif.)*

Katherine (Kate) Burton, *Whitman*

Hailey Grisel, *UC Riverside*

Katharine Latta, *Colgate*

Jessica Morin, *Connecticut*

Sara Rangitsch, *Wyoming*

Whitney Robinson, *Tennessee*

Alyssa Sanchez, *Auburn*

Sarah (S.E.) Spencer, *North Carolina*

Morgan Weaver, *Arizona*

Carlin (Carly) Wooldridge, *Missouri*

CHAPTER CONSULTANTS 2016–2017

Jessica Sitton, *Oregon*

Sarah (S.E.) Spencer, *North Carolina*

LEADERSHIP CONSULTANTS 2016–2017

Morgan Agster, *Arizona*

Hannah Bingham, *Oklahoma State*

Dina Hagigeorges, *Northeastern*

Ingrid Heider, *Loyola*

Claire Kozel, *Santa Clara*

Kendall Michaud, *Washington State*

Katherine O'Regan, *Chapman*

Madalynn Poletis, *Missouri*

Rachael Schaaf, *Florida*

Lindsay Webb, *South Carolina*

Merrill Weber, *UC Berkeley*

Kristina Wenner, *Arizona State*

KAPPA KAPPA GAMMA FOUNDATION

President Mary (Kay) Reid Tennon, *Arizona State*

Vice President Pat McInnis Cooper, *Mississippi*

Treasurer Jean Schmidt, *Miami (Ohio)*

Financial Assistance Chairman Katherine (Kay)
 Scholberg Weeks, *Bucknell*

Museums Chairman Julie Martin Mangis, *George
 Washington*

Trustees:

Beth Uphoff Black, *Illinois Wesleyan*

Mary Jane Jackson Crist, *Arizona*

Nancy Eyermann Foland, *Tulsa*

Jill Powell Goldberg, *Ohio State*

Susannah Erck Howard, *Florida State*

Tamela Jones Lanier, *Oklahoma*

Gail Simpson Owen, *Monmouth*

Anna (Mitch) Hiatt Pflug, *Colorado*

Finance Chairman Jean Schmidt, *Miami (Ohio)*

Committee:

Mary Jane Jackson Crist, *Arizona*

Kristie Dimitriou, *Villanova*

Nancy Eyermann Foland, *Tulsa*

Julie Martin Mangis, *George Washington*

Mary (Kay) Reid Tennon, *Arizona State*

Amy McCracken Weldele, *Ohio Wesleyan*

Financial Assistance Committee:

Rose McGill Confidential Aid to Alumnae and Circle

Key Grants Chairman Alice Jackson Curtin, *William
 & Mary*

**Rose McGill Confidential Aid to Undergraduates
 and Emergency Grants Chairman** Sally Cowdery
 Spencer, *St. Lawrence*

Rose McGill Holiday Program Chairman

Kay Beasley Martin, *Arkansas*

Scholarships Chairman Jane (Janey) Pritchard Cantwell,
Butler

Undergraduate Carol Morrison Sobek,
Arizona State

Graduate Cynthia Harris Cashore, *William & Mary*

FRATERNITY DIRECTORY

Museums Committee:

The Stewart House Chairman Michelle Merritt,
Monmouth

The Stewart House Committee:

Gena Corbin Alcorn, *Monmouth*

Airyell Deford, *Monmouth*

Katie (Kate) Francis, *Monmouth*

Michelle Merritt, *Monmouth*

Louise Lauder Roos, *Monmouth*

Carissa Scott, *Monmouth*

Mary Mosley Stahl, *Monmouth*

Mary (Polly) Walton Timmerman, *UCLA*

The Heritage Museum Chairman Diane Miller Selby,
Ohio State

Lois Sells Fulmer, *Ohio State*

Phyllis White Geeslin, *Indiana*

Jill Powell Goldberg, *Ohio State*

Susannah Erck Howard, *Florida State*

Louise (Bunnie) Laine Lubs, *Monmouth*

Edith Petersilia Mayo, *George Washington*

Hilary Miller, *Washington & Jefferson*

Ex Officio Kelly Fowler Nylund, *Virginia Tech*

Ex Officio Kylie Towers Smith, *Simpson*

KAPPA KAPPA GAMMA FOUNDATION OF CANADA

President Karen Castro Rosil, *Toronto*

GENERAL CONVENTION COMMITTEE

Chairman – Lara Meinheit Miller, *Illinois*

Assistant to Convention Chairman – Karen Bosch,
Minnesota

Fraternity Meeting Coordinator – Alison Talcott (Ohio
 University)

AV Chairman Janet Meinheit, *Wisconsin*

Boutique Chairman Brett Skaugstad Watson, *Kansas*

Boutique Assistant Alicia Johnson Renard, *Minnesota*

Courtesy Resolutions Chairman – Stacy Underwood
 Bjarnason, *Washington*

Dining Chairman Patricia (Patty) Zimmerman Packard,
Arizona State

Elections Committee Chairman Suzanne Giffen,
Allegheny

Kappa Koncierge Chairman Cori Egnew Woods,
Richmond

FRATERNITY DIRECTORY

Kappa Konicierge Assistants:

Allison Gillespie, *Miami*

Margaret (Elaine) Perett Hanner, *Tulsa*

Kappa Trainer Jane Sangalis, *Indiana*

Music Chairman Victoria (Vicki) Hill Carrigan, *UC Riverside*

Music Accompanist Sarah Skinner, *Emory*

Photography Coordinator Sarah (Sally) Seigfreid Harner, *Missouri*

Protocol Chairman Julie Love Stonehouse, *UC San Diego*

Resolutions Chairman Carol George Sanders, *UC*

Northridge

San Diego Local Liaison Deanne Palmer, *Colorado*

Assistant to the Local Liaison Kelle Collins Montague,

Tennessee

Local Assistant for Boutique Debra (Debbie) Walquist

Loomis, *Arizona State*

Local Assistant for Decorations Andrea Bauer

Champoux, *Wisconsin*

Local Assistant for Decorations April Covington

Knudson, *UC Davis*

Local Assistant for Dining Brittany Russo, *Arizona*

Local Assistant for Kappa Konicierge Kelsey Falkenberg,

San Diego

Local Assistant for Local Appreciation Dinner (LAD)

Margery (Marnie) Wright Barnhorst, *Oregon*

Local Assistant for Apparel Kristin Groff Bradford, *San*

Diego

Local Assistant for Hospitality Christina Espinosa Maril,

TCU

Local Assistant for Registration Kelley Purkey Vacheron,

West Virginia

Local Assistant for Volunteers Kristin Groff Bradford, *San*

Diego

Staging Chairman Allyson Coffey, *Oklahoma*

Staging Committee:

Brianne McGann, *San Diego*

Iliana Garcia, *New Mexico*

Kara Albert, *Westminster*

Lisa Lunney Thomson, *Bowling Green*

The Hoot Editor Kristin Johnson Sangid,

Georgia Southern

VIP Chairman Janna Lory Cross, *Drake*

VIP Assistant for Alumnae Achievement Award

Recipients Caren Nitschke Chung, *DePauw*

2018 Denver Liaison – Susan Reynolds Harned, *Nebraska*

CONVENTION HEADQUARTERS STAFF

FRATERNITY

Executive Director Kari Kittrell Poole (Miami, Ohio)

Director of Business and Operations Joelle Folian (Ohio State)

Meeting Coordinator Alison Talcott (Ohio University)

Director of Education and Training Marla Williams (Western Washington)

Executive Services/Administrative Assistant Linda Carruthers (Arizona State)

Director of Finance Heather Root (Ohio State)

Chapter Finance Supervisor Sarah Witkowski Gipe, *Ohio Wesleyan*

Senior Financial Accountant Denise Brenner (Ohio Wesleyan)

Director of Marketing and Communications Ashley Gilbert Moyer, *Purdue*

Director of Talent Management Sarah Bohman (Ohio State)

Content Marketing Specialist Catherine (Cathy) Mace (Ohio University)

Internal Marketing Specialist Lucy First Gerlach, *DePauw*

Editor of The Key Kristin Johnson Sangid,

Georgia Southern

Director of Membership Services Jane Ketcham Steiner, *Miami (Ohio)*

Chapter Services Coordinator Caroline Washnock, *Centre*

Risk Management Coordinator Sarah Kropp Walther, *Allegheny*

Director of Technology Jean Davis (Otterbein)

Headquarters Intern Colleen Clennon, *Purdue*

FOUNDATION

Executive Director Beth Burkes (Wake Forest)

Advancement Officer Lindsey Gale, *Ohio Wesleyan*

Director of Annual Giving Laurel L. Palmer, *Ohio State*

Director of Legacy Giving Margaret (Maggie) Sims Coons, *Hillsdale*

Archivist/Museums Director Kylie Towers Smith, *Simpson*

Communications Program Manager Ali Brown,

Ohio State

Foundation Executive Assistant Emily Truitt Robinson,

LSU

Stewart House Fellow Anna Meyer, *Missouri*

Museum Intern Meredith Wray, *William and Mary*



KAPPA KAPPA GAMMA FRATERNITY

71ST BIENNIAL CONVENTION



NAME

CELL