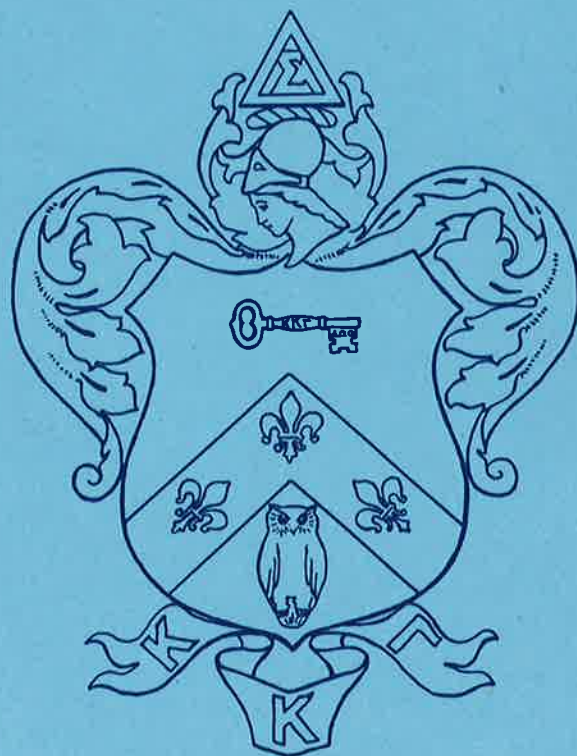


SONGS

OF

KAPPA KAPPA GAMMA



SONGS  
OF  
KAPPA KAPPA GAMMA



Eighth Edition

Published under the direction of the  
Fraternity Music Committee

BONNIE DAYNES ADAMS, Delta Eta, Chairman

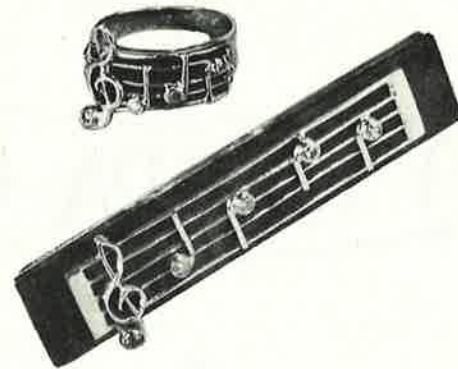
Katherine Nolan Kammer, Beta Omicron  
Jane Price Butler, Gamma Omega  
Nan Fuldner Walker, Beta Rho

Cover design by Gloria Hill Hopkins, Beta Omicron

Copyright 1960 by the Kappa Kappa Gamma Fraternity

Printed in U.S.A.

## JEWELRY OF THE MUSIC CHAIRMAN



The bar pin and ring pictured here belonged to Catherine Allison Christie, Iota, former chairman of music and editor of the SERENADE OF KEYS. At her death, in 1948, she willed these to the Fraternity for each music chairman to wear and cherish. The bar pin, in 14K gold and onyx (in a musical design), is set with four round diamonds. The ring is black enamel, set with three small diamonds.

Catherine Christie will always be remembered because of this jewelry and because of her great personal contribution to the music of the Fraternity.

## PREFACE

The first collection of Kappa songs, (a small booklet with words only), was published in 1886 by Beta chapter. This was followed, in 1889, with a song book published by Chi chapter, compiled by Susan Goldsmith Kelley and Jessie Congill of Iota chapter. The third edition, which appeared in 1897, was published by the Grand Council and edited by Beta Epsilon chapter. In 1916, the fourth edition appeared, compiled by Jeanetta Comstock and Juliette Hollenback, of Beta Sigma chapter. This was followed, in 1921, by a large collection of SONGS OF KAPPA KAPPA GAMMA, published under the direction of Carolyn L. McGowan, in cooperation with Beta Rho chapter and the Cincinnati Alumnae. The sixth edition was published by the Fraternity Music Committee, under the supervision of Winifred Glass; and the SERENADE OF KEYS, compiled and arranged by Catherine Allison Christie, was published in 1945. And now, in 1960, we present this, the eighth edition of SONGS OF KAPPA KAPPA GAMMA.

In this book we have included many of the old and treasured songs of the Fraternity, as well as the new songs and arrangements that are taking their rightful place in Kappa tradition. To facilitate the use of this book, the songs have been classified into four groups: 1, Traditional Songs; 2, Rushing Songs; 3, Special Occasion Songs; and 4, General Songs.

Kappa music has been gathered from all chapters. We have checked this material carefully to determine the best and most accurate version of each song. These we bring to you with the hope that you will enjoy them and that soon you will all be singing them in the same way. We have given credit to authors and composers when we have been able to locate them.

We wish to express our sincere appreciation to the committee in Denver, whose faithful efforts have helped make this book possible.

Due to copyright restrictions, we have not been able to include music of all of the songs. We like to encourage Kappa talent and use songs that are truly "Kappa", and we are very pleased that we have so many original songs to present to you in this book.

Music plays a beautiful and important part in the life of each of us, and it is to the greater enjoyment of it that this book is dedicated.

Music Chairman.

## TABLE OF CONTENTS

	Page
Traditional Songs .....	5
Rushing Songs .....	23
Songs for Special Occasions .....	47
General Songs .....	69
Alphabetical Index .....	100
Classified Index .....	102

Fa - ther, we are thank - ful, May we ev - er be, —  
Mind - ful of Thy bless - ings, We of K. K. G.

# One, Two, Three Words

*Air: "1-2-3-4"*

Arrangement by  
Molly Roller Spingler  
*Gamma Zeta*

One two three words Run thru the heart of our song—

One two three words Car-ry our love a - long—

One two three words locked by the gold - en key— To

all who read it spells our creed K. K. and G.—

Copyright by Miller Music Corporation. Published by permission.

# Garden Of Blue

*Air: "Roses of Picardy"*

Words by  
RUTH CLEMENS  
*Gamma Theta*

I unlocked the gate with a golden key,  
Stepped inside to a garden of blue,  
There bloomed a profusion of fleur-de-lis,  
Ne'er before had I seen such a view.  
And I knew 'twas the end of my wanderings,  
Never more would I wander afar,  
For I'd come to my heaven in Kappa land,  
'Twas unlocked with the key to my heart.

# Kappa Symphony

*(a capella)*

Words by  
ELLA WALLACE WELLS  
*Beta Tau*

Music by  
EMILY JEAN DAY  
Arranged by Marilyn Hagar, '38  
*Beta Tau*

*mf*  
Thou, Kap - pa Gam - ma, live each day in all our hearts;  
And in our lives play many a no - ble part.— The  
part of sec - ond moth - er, coun - sel - or, true  
friend; Of love's i - deal,— To which we raise our  
*p*  
eyes, Un - til the end, un - til — the end.

# Not Thy Key, Oh Kappa

*Air: "Because You're You"*  
by Victor Herbert

*Beta Sigma*

Not thy key, Oh Kappa,  
Not thy fleur-de-lis,  
These are only symbols  
Of what you mean to me.  
There is something deeper  
Than the flower or key,  
You have taught the meaning  
Of fraternity.

# I Love the Name of K.K.G.

Air: "I Love You the Most of All"

Omega

Arrangement by Bonnie D. Adams  
Delta Eta

I love the name of K. K. G., I love the lit - tle  
gold - en key; I love the true blue from the sky and the sea  
and the flow - er, the fleur - de - lis, I love the girls who  
hon - or thee, I love the men who choose from thee, For you're the  
*rit.*  
best fra - ter - ni - ty; And I love you the most of all.

# I Love You Kappa Gamma

Origin Unknown

I love you, Kap - pa Gam - ma, You're ver - y dear to me; I  
love your Sig - ma Del - ta, and your lit - tle gold - en key, I  
love your pur - ple flow - er, and your col - ors blue and blue, I  
love your Kap - pa Gam - ma, I just can't help lov - ing you.

# There's A Warm Spot In My Heart For K. K. G.

Air: "There's Warm Spot In My Heart For Tennessee"

Beta Pi

Andante

There's a warm spot in my heart for K. K. G., And the  
girls who wear the lit - tle gold - en key, And wher - ev - er I may roam, If at  
col - lege or at home, There's a warm spot in my heart for K. K. G.

# My Little Kappa Lady

Air: "My Little Java Lady"

*Iota*

Music by JOHN B. LOWITZ

My lit - tle Kap - pa La - - dy

Queen of the Fleur - de - lis \_\_\_\_\_ Won't you come back, my

La - dy, Won't you come back to me? \_\_\_\_\_

Reprinted by Special Permission of the Copyright owner  
Paul - Pioneer Music Co., New York City

I'll build a fine air cas - - tle

Ope'd with a gold - en key, \_\_\_\_\_ My lit - tle Kap - pa

La - dy My lit - tle K. K. G.

## Our Fraternity

Air: "The Slumber Boat"

Words by  
RUTH PETERSON  
*Upsilon*

Arrangement by  
Muriel May Sack  
*Beta Mu*



1. Our fra-ter-ni-ty's the sun; Shin-ing in the sky,—  
2. Our fra-ter-ni-ty's the moon; Shin-ing in the night,—



Shin-ing on our col-lege days, As the years go by;—  
When the years have dimm'd our eyes, We'll see the kind-ly light,—

### CHORUS



Dear K. K. G. Here's our song to thee, (to thee.)—



Moth-er of a thou-sand joys, Our fra-ter-ni-ty.—

CHORUS (for Rushing) — Sail, Freshman, sail  
Out across life's sea,  
Only don't forget to sail  
Back to K. K. G.

Printed by permission of Summy-Birchard Publishing Co., Evanston, Ill., Copyright owners

## The Best Fraternity

Air: "Dearest Mae"

*Phi*



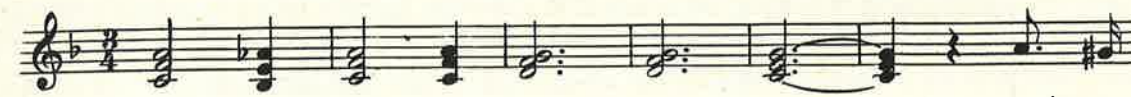
The best fra-ter-ni-ty,— The best fra-ter-ni-ty,— Our



vows so true, We now re-new, To our fra-ter-ni-ty.—

## Here's To Kappa Gamma's Blue and Blue

Words and Music by  
ELIZABETH KNOX MUTH  
*Beta Mu*  
Arranged by Bonnie Daynes Adams  
*Delta Eta*



K. K. G., my K. K. G. Here's to



Kap - pa Gam - ma's blue and blue, Here's to Kap - pa's



fleur - de - lis; Here's to the ones who are staunch and



true, Bound in fra - ter - ni - ty Here's to



those who wear the gold - en key, To the owl of



mys - ter - y, Here's to the ones that



I love the best, Oh, here's to K. K. G.



# Drink to the Kappa Memories

KATHERINE TOBIN MULLIN  
Beta Sigma Chapter

*Air:* Drink to me only  
with thine eyes

*Very smoothly and rather slow*

Drink to the Kap-pa mem-o-ries That last our whole life through;

Drink to the friend-ships Kap - pa gives That we find so real and true;— And

as through the years that are to come, Re-mem-brance sweet-er grows,—

*Repeat singing softly*  
We'll hold more dear those mem- o - ries That on-ly a Kap - pa knows.—

# Oh K. K. G.

"Liebestraum" by LISZT  
Re-arranged by C.A.C.

(The words may be used or these parts may be hummed.)  
Melody

1. Oh K. K. G. \_\_\_\_\_  
2. Oh K. K. G. \_\_\_\_\_

Our fra - ter - ni - ty \_\_\_\_\_ True we will ev - er  
Sym - bol of loy - al - ty \_\_\_\_\_ You now be - long to

be. \_\_\_\_\_  
me. \_\_\_\_\_ Thy col - ors blue and blue \_\_\_\_\_

Chal - lenge me a - new To live

thy creed \_\_\_\_\_ In ev - 'ry word and deed \_\_\_\_\_

We love you K. K. G. \_\_\_\_\_

We love you K. K. G. \_\_\_\_\_

# Lovely Spirit of Our Lives

Words by  
CLEARA CLARK WHEELER  
*Chi*

*Air: "Abenaki"*

Music by  
GEORGE C. GOW  
Arranged by Bonnie D. Adams  
*Delta Eta*

Oh— Kap - pa, Kap - pa, Gam - ma, love - ly

spir - it of our lives, — In our hearts your beau - ty lin - gers, and your joy sur -

vives, — Flash - ing with the light of dia - monds, ra - diant with the sky's clear

blue. — Bend a - bove us, — give un - to us — in - spi - ra - - tion —

new; — Won - drous spir - it, — we be - hold you, — ten - der, sweet and ver - y

near, You are love - ly — as the dawn - ing mystic sis - ter dear; — Oh, —

Kap - pa — Kap - pa Gam - ma, — to your vi - sion we are true, — In our

hearts your beau - ty lin - gers, we be - long to you.

# The Old Gray Owl

Air: "Sycamore Tree"

Beta Zeta

Piano introduction in 2/4 time, featuring a melody in the right hand and accompaniment in the left hand.

The owl said, "Kap - pas are the girls for

Musical notation for the first line of lyrics, including vocal line and piano accompaniment.

me," The owl said, "My flow'r

Musical notation for the second line of lyrics, including vocal line and piano accompaniment.

is the fleur - de - lis. If

Musical notation for the third line of lyrics, including vocal line and piano accompaniment.

you are true to the blue and blue," He cocked his head and he

Musical notation for the fourth line of lyrics, including vocal line and piano accompaniment.

said, "You'll do." Said the old gray owl

Musical notation for the fifth line of lyrics, including vocal line and piano accompaniment.

in the syc - a - more tree.

Musical notation for the sixth line of lyrics, including vocal line and piano accompaniment.

## If You Ask Us Why We Love You

*Air: "Just My Style"*

Music in 1932 Song Book

Words by  
KATHERINE T. MULLIN  
*Beta Sigma*

If you ask us why we love you,  
We will ask you if you know -  
Why the melodies of music  
Seem to blend together so;  
There is something in the music,  
In the life of K.K.G.  
That tunes us altogether  
In just one key.

## Tell Me Why

*Air: "Tell Me Why"*

*Gamma Chi*

Tell me why the stars do shine, tell me why the ivy twine,  
Tell me why the ocean's blue, tell me, O Kappa, just why we love you.

(We've added this middle part for a soloist with  
the rest of the chapter humming a harmony part.)

I really think that God above created you for me to love,  
And picked you out from all the rest,  
Because He knew I'd love you best.

Because God made the stars to shine,  
Because God made the ivy twine,  
Because God made the ocean blue,  
God made thee Kappa, that's why we love you.

## Hail, Hail To Blue and Blue

*Air: "Hail, Hail, the Gang's All Here"*

*Beta Kappa*

"Hail, hail, to blue and blue,"  
Said the owl up in the tree,  
'Round his neck a golden key.  
"Hail to the fleur-de-lis,  
Here's to dear old K.K.G.

## RUSHING SONGS

### Hey, Hey, Rah dee doo Dah

SHARON WYLIE LONG  
*Delta*

BARBARA MILES  
*Delta*

**Fast**

Well, hey, hey, rah dee doo dah! Come a-long with me, Well

hey, hey, rah dee doo dah! I'm a K. K. G.! Now if you

wan-na step out and paint the town red, Just call on me hon-ey cuz you

go to my head. So hey, hey, rah dee doo dah! You're deal-ing with the key. Now, we're

might-y neat kids and our grades are all A, we nev-er hit the dust, But there's

*rit.*  
on-ly one troub-le with what we say- you'll have to trust, Be-cause we're

flam-in', tam-in', gam-in', aim-in' dames from I. U. And our mot to is just-  
(College)

we will, will you? So, hey, hey, rah dee doo dah! I'm a K. K. G.

## There's a Key to My Heart

Origin Unknown

There's a key to my heart, there's a key to my past, There's a  
key that holds my front door fast, There's a key St. Pe-ter wears on a chain, when he  
wants to get back in - to hea-ven a - gain. There's a key that's used by  
Blue-Beard's wife in the ter - rif - ic strug - gle of her life, There's Pan-  
dor - a's key to know-ledge, that's why we're all in col - lege. But, of  
all the keys of His - to - ry, Phil - os - o - phy, The - ol - o - gy, The  
Kap-pa key is the one for me, that's why I'm all key'd up a-bout K. K. G.

## When I First Saw the Golden Key

Words and Music by  
TANNISSE BROWN  
Beta Phi

When first I saw the gold - en key I  
said to my - self, "now that's for me;" Now that I am a  
Kap - pa Gam, It's hard to say just how hap - py I am.

## We're Kappa Gamma Sisters True

Words and Music by  
JUDY MORROW ROGERS  
SUDIE TEETERS  
FENSTERMAKER  
Delta

We're Kap - pa Gam - ma sis - ters true How we love the  
blue and blue the gold - en key the fleur - de - lis So come and  
join the song to - geth - er Those true bonds will  
nev - er sev - er Live like a K. K. G. em - blem of fra -  
ter - ni - ty. *Fine* O - ver the The - ta lodge the  
D. G. house or e - ven Pi Phis If they could  
on - ly know a - bout our gold - en key We love our  
house we love our key we're sis - ters yes - sir - ee. *D.C.*

## How'd You Like to Be a K. K. G.

Origin Unknown

Arrangement by *Gamma Iota*

How'd you like to be a K. K. G.? How'd you like to  
wear the gold-en key? Do the things that all the Kap-pas do,  
Wear the blue and blue, Be ev-er loyal and true, to Kap-pa Gam-ma  
you're the best of all, Friend-ships fade but nev-er seem to fall,  
You're the best of all fra-ter-ni-ties, so Kap-pa,  
Kap-pa Gam-ma, you're the one for me.

### Kappa Chant

*Air:* "Hawaiian War Chant"

There's the owl, the key,  
The blue and blue,  
The fleur-de-lis,  
Symbol, color, flower, badge  
Of our fraternity,  
Loyalty, sincerity, honor and fidelity,  
Kappa Kappa Gamma, here's to you!

Kappa Gamma, K.K.G.  
Kappa Gamma, you're for me!

## God Gave to the Wisemen

Origin Unknown

God gave to the wise-men their wis-dom. — To the  
po-ets their songs and their dreams. — To Dad and moth-er He  
gave each oth-er not a soul was left out so it seems. — Now  
I thought that I'd been for-got-ten, — that life was an  
emp-ty af-fair — But when you gave me Kap-pa 'twas  
then that I knew that I'd got-ten more than my share. —

### Wanting You

*Air:* "Wanting You" from "The New Moon"

*Beta Lambda*

Wanting you, all the Kappas are wanting you,  
To belong to the blue and blue  
To be loyal and ever true,  
Castles high, we will build in the blue, blue sky,  
With a gold key for you and me,  
In our own fraternity.  
There's a land where the flowers that bloom are  
lovely fleur-de-lis  
So come with me, to our wonderful Kappa land,  
Oh, Kappa land.  
Wanting you, there is nothing we'd rather do  
Than to make you a sister too - so true -  
In K.K.G.

# Bright Kappa Key

*Air: "Sweet Violets"*

Arrangement by *Beta Chi*

Moderato

Now, all you young Fresh-men who  
 lie a-wake nights, With vi-sions of keys and of ar-rows and oth-er in-  
 sig-nia with let-ter of Greek, That made your first day such a  
 heck of a con-glom-er-a-tion of chat-ter and song, In

Published by permission of Edwin H. Morris and Co., Inc., copyright owners.

all the ex-cite-ment you might choose the kite or the an-chor but  
 soon you will see, The cream of the crop are all wear-ing the-  
 Bright Kap - pa key Best of all the  
 oth-ers Look the girls o-ver and you will see- the  
 fin-est are wear-ing the bright Kap - pa key.



# She's a Kappa

MARIA SJOLSETH  
Γ X  
Arranged by C.A.C.

(spoken) (spoken)

She's a Kap-pa Is that so? She's a Kap-pa How d'ya know? Cause

she's got per-son - al - i - ty, she's all those things you want her to be.

She's got two arms to hold you tight M - mm! And two lips to whis-per good-night, She's a

K. K. Γ that's plain to see, 'cause she's got per - son - al - i - ty Oh

Kap - pa girl, you're a lit - tle bit of all right! And we're not fool-in'

Kap - pa girl, oh hold me tight - ly, in my arms to whis-per night-ly

Key of gold and col - or blue We're all Kap-pas, and it's true We'd

rath - er be in K. K. G. 'Cause it's the ver - y best fra - ter - ni - ty.

*Unison*

This attractive Song can be made *more* so, by following these suggestions, given by the composer.

- (SOLO) She's a Kappa
- (CHORUS) Is that so?
- (SOLO) She's a Kappa
- (CHORUS) How d'ye know?
- (SOLO) 'Cause she's got personality, she's all the things you want her to be.
- (CHORUS) Oh!
- (SOLO) She's got two arms to hold you tight
- (CHORUS) Mmmm! (*they hum this*)
- (SOLO) And two lips to whisper "goodnight!"
- (CHORUS) She's a KKG, that's plain to see, 'cause she's got personality.

- (SOLO) Oh, Kappa gal, you're a little bit of all right!
- (CHORUS) And we're not fooling!
- (SOLO) Kappa gal, oh, hold me tightly, in my dreams to whisper nightly-
- (SOLO on Harmony with CHORUS) Key of gold, and colors blue, We're all Kappa's and it's true We'd rather be in KKG, 'Cause it's the very best fraternity.

# Kappa Maid

Words by  
PHYLLIS McGINLEY

GLADYS RICH  
Δ J

1. Oh how'd you like to be a Kap - pa maid and wear a  
2. Oh how'd you like to walk the camp-us lanes and hold your

shin - ing gold - en key? A lit - tle mag - ic pin that will  
head up proud and high? And hear the peo - ple say in an

let you in - to all the joys of K. K. G. There you will find the things you're  
awe struck way, "A Kap - pa maid is pass - ing by!" Oh how'd you like to meet the

look - ing for, no hope will be de - layed. Can't you see how good is  
com - ing years with us, and un - a - fraid? Can't you see how good is

sis - ter - hood? Won't you be a Kap - pa maid?  
sis - ter - hood? Won't you be a Kap - pa maid?

# Rah! Rah! for Kappa Kappa Gamma

Origin Unknown

Rah, rah for Kap - pa Kap - pa Gam - ma, Three cheers for the girls who wear the

blue and blue. Now you can quote me when I say I

am — a Kap - pa girl for K. K. G. I'm true, The

wise old owl who wears the gold - en key, Blue rib - bon gar - dens grow the

fleur - de - lis, Oh, the gold - en key, the fleur - de - lis, the

blue and blue, well that's for me. Rah, rah for K. K. G.

# To-whit, To-who!

Origin Unknown

Rather fast

"To-whit, to-who!" Says the wise old owl "To-whit, to-who!" Says he; "To woo," says he, "is the finest thing that any young man can do." "Now if he is a wise young man, And if he thinks that he possibly can, He'll find himself a Kap-pa Kap-pa Gam, to add some 'wit to his woo!"

# When You Wear a Sigma Delta Pin

Air: "When You Have a Little Girl At Home"

Words by Beta Xi

Arrangement by Nan Fuldner Walker  
Beta Rho

When you wear a Sig-ma Del-ta pin, a tri-angle of blue and blue, There's some-thing worth, there's some-thing more than all the earth in Kap-pa friend-ships true. Oth-er girls may rush you for a while, and they may thrill you through and through But you nev-er leave when the K. K. G's. say "we want you!"

# It's Kappa Kappa Gamma For Me

MARY JAC RANDELL  
*Upsilon*  
Arranged by C. A. C.

Piano introduction for the first system on page 36, featuring a treble and bass clef with a 4/4 time signature. The melody includes a triplet of eighth notes.

Kap - pa, Kap - pa, Kap - pa Kap - pa Gam - ma, the pride of all sor - or - i -

Vocal line and piano accompaniment for the first system on page 36. The vocal line is in a treble clef, and the piano accompaniment is in a bass clef.

ties The camp - us shines with the girls of K. K. G. we are as

Vocal line and piano accompaniment for the second system on page 36. The vocal line is in a treble clef, and the piano accompaniment is in a bass clef.

hap - py and care - free as a Kap - pa can be. Col - lege, col - lege,

Vocal line and piano accompaniment for the first system on page 37. The vocal line is in a treble clef, and the piano accompaniment is in a bass clef.

gives us all our knowl - edge, so phis - ti - cat - ed girls are we! You can

Vocal line and piano accompaniment for the second system on page 37. The vocal line is in a treble clef, and the piano accompaniment is in a bass clef.

have your Al - pha Phi - gees, your Pi Phis and your D G's it's Kap - pa Kap - pa Gam - ma for

Vocal line and piano accompaniment for the third system on page 37. The vocal line is in a treble clef, and the piano accompaniment is in a bass clef.

me It's Kap - pa Kap - pa Gam - ma for me!

Vocal line and piano accompaniment for the fourth system on page 37. The vocal line is in a treble clef, and the piano accompaniment is in a bass clef.

# Kappa's Garden Gate

Words by  
PHYLLIS McGINLEY

GLADYS RICH  
Δ Η

When you're dash-ing all a-bout,

just a new rush-ee, din-ing in and danc-ing out, brave-ly drink-ing tea;

When de-cid-ing seems to you such a dread-ful thing, we will tell you what to do-

*poco rit.* - - - *a tempo*  
lis-ten while we sing: Kap-pas gar-den gate is wide, and the gar-den nods, "Hel-

lo!" Come and take a look in - side, where the sweet-est flow - ers

grow— Here the sun shines all day long, here the winds blow fresh and

free; All the gar-den waits on those who pos-sess the gold-en key;

*rit.*  
All the gar - den waits on those who pos - sess the gold - en key.

# Kappa-Kappa Gamma

Arranged by Ellen Donovan  
Delta Alpha

Kap - pa, Kap - pa Gam - ma Kap - pa Kap - pa Gam - ma I love the flower  
It's the fleur-de - lis I love the Kap - pa pin 'Tis the gold - en key.  
I love to live at \* with all the K. K. G's.

REFRAIN  
Kap - pa, Kap - pa Gam - ma Kap - pa, Kap - pa Gam - ma  
I love the hue of the skies a - bove I have sis - ters  
to share my faith and love I will re - mem - ber the girls I knew 'neath  
Kap - pa blue and blue Kap - pa Kap - pa Gam - ma Kap - pa Gam - ma, *pp whisper*

\* Name of School

## K. K. G. - Some Fraternity

Air: "Three Blind Mice"

Beta Alpha

A Round -

K.K.G., K.K.G.  
Some fraternity, some fraternity,  
It beats the others by a mile,  
It's got the pep, it's got the style,  
It keeps things going all the while,  
Does K.K.G.

# When I Went To College

Air: "Jolly Sophomore"

Upsilon

My father was a minister, a Beta Theta Pi.  
My brother is in college now, a young Phi Kappa Psi.  
My uncle was a howling sport and joined the Sigma Nu's  
So when I went to College they all told me what to do.  
My father said "Now daughter dear, I'll give you good advice.  
Your mother was a Kappa girl ... a gem of matchless price.  
So if the Kappa's bid you, don't refuse the honor high.  
Be a wise girl like your mother was and pass the others by."

My brother said "Now listen, sis, don't be a little chump.  
If you should make a mess of this, the family'd get a bump.  
There's only one fraternity it's Kappa Kappa Gam.....  
And for all the rest I wouldn't give a little tinker's dam."

My uncle sat and smoked his pipe and blew the smoke away.  
"Before you go to college I've just one thing to say.  
In choosing your fraternity just take the best you see,  
And I'll send you fifty dollars for a little golden key."

My mother said "Now daughter dear, you're old enough to know  
That Kappa Kappa Gamma is the only thing to go.  
So at the rushing parties where the girls wear golden keys,  
That's the place for you to make a hit, for they are K.K.G's.

So when I went to college I thought I knew a lot .....  
And Kappa Kappa Gamma was Johnny on the spot.  
The others tried to rush me, but their stories wouldn't do  
So now my heart is beating 'neath a knot of blue and blue.

## Girl, Girl

Air: "Moon, Moon, Great Big Silvery Moon"

Oh little girl, girl, what you gonna do  
When you come to \*  
Girl, girl, what you gonna be,  
How'd you like to be a K.K.G.?  
Work a little, play a little, study some -  
All in all you'll have a lot of real good fun, - so -  
Girl, girl, what you gonna do  
When you come to \*  
Start deciding,  
When you come to \*

\* - Insert college name.

## I Wish I Wuz

*Air: "I Wish I Wuz an Apple on a Tree"*

I wish I wuz a little golden key,  
I wish I wuz a little golden key,  
If I wuz a little golden key,  
I'd shine real bright for all to see,  
I wish I wuz a little golden key.

Chorus:

Hi-ho, fiddle-de-dee, here is what I'd like to be,  
Hi-ho, fiddle-de-dee, here is what I dream I'd like to be.

I wish I wuz a Kappa hootin' owl,  
I wish I wuz a Kappa hootin' owl,  
If I wuz a Kappa hootin' owl  
I'd never, never, ever scowl,  
I wish I wuz a Kappa hootin' owl.

Repeat Chorus

I wish I wuz a bright blue fleur-de-lis,  
I wish I wuz a bright blue fleur-de-lis,  
If I wuz a bright blue fleur-de-lis  
I'd make my home in K.K.G.  
I wish I wuz a bright blue fleur-de-lis.

Repeat Chorus

## We Are the K. K. Gs.

*Air: "Chopsticks"*

*Delta Eta*

We are the K.K.G.s,  
We wear the golden keys,  
We love the blue and blue,  
Yes! you know we do.

We hold our heads up high,  
We never sob or sigh,  
We are the Kappas of U. of U. \*

So cheers! We'll sing great praise  
To our college days,  
And our Kappa ways, Oh yes!

To sisters true who honor K.K.G.  
Love the owl  
And the fleur-de-lis,

So -

This is all there will be,  
We sing our love to thee,  
The best fraternity  
K.K.G.

\* - Insert college name.

## I Love Your Blue

*Air: "Mama Inez"*

Words by  
*Delta Eta and  
Delta Upsilon*

At \* , you'll find the Kappas at home,  
In honor of them all, from our banquet halls,  
We sing this song:

I love your dark blue, I love your light blue,  
In fact I love both your blue and your blue,  
I love to howl, about your owl,  
Next to the turkey - the most famous fowl,  
I love your province, chapters and badges,  
Your actives, alumnae, and pledges,  
Your Kappa founders, your law propounders,  
Your lovely fleur-de-lis,  
Oh, K.K.G., Oh, K.K.G.,  
The Kappa key is the one Key for me! Whee!

\* Insert address of chapter house.

## When I Was Eighteen

*Air: "The All American Girl"*

*Delta Eta*

When I was eighteen, I came to college,  
I was as green as any Frosh could be,  
Compared to High School it was a whirlpool  
It started with the Pan-Hel tea;  
First came the D.G.'s, and then the Pi Phi's,  
The Alpha Chi's were awfully nice to me,  
Then came the white house, it was the right house,  
And now it's Kappa Gamma for me.

## Lovely Girl

*Air: "Till We Meet Again"*

Lovely girl, she wears the golden key,  
Beloved symbol of fraternity,  
O'er the door, the fleur-de-lis  
Haunting strains of K.K.G.  
We'll sing to you our song of blue and blue,  
Our hearts are yours in everything you do,  
So, come with us, we'll show the world  
Our lovely Kappa girl.

Someday soon, we all must say "Good-bye",  
But we'll recall those memories 'till we die;  
We'll remember through the years  
Times we shared our joys and tears,  
So, don't be blue when college days are through,  
You know we will all remember you,  
Because, you see, you'll always be  
Our lovely Kappa girl.

## Romeo

*Air: "Hinky Dinky Parles Vous"*

Said Romeo from underneath the balcony,  
"I dearly love my Juliet and she loves me,  
I swear by all the stars above  
That she shall be my only love,  
For she is one of K.K.G."

Said Julius Caesar from the start, "I plainly see  
That Cleo wears across her heart a golden key,  
This is no time for men to hedge,  
The girl was once a Kappa pledge,  
And now she is a K.K.G."

A famous king of history - who was he?  
He tried his luck with Anne Bolyne and doomed was she,  
"I'm not a Kappa, Sir", she said,  
King Henry cried, "Chop off her head!  
And bring me in a K.K.G."

Helen of Troy had a face that launched a thousand ships,  
She made Paris in record time, and what a trip -  
The men all fell for her sweet ways,  
And so did Troy in a fiery blaze,  
For she was one of K.K.G.

So, here's a toast to all of you of K.K.G.  
We are so very proud to boast you wore a key,  
You caught your men and held them fast;  
We hope to make your record last,  
For we are all of K.K.G.

## Goodnight Rushee

*Air: "Goodnight Sweetheart"*

Good night, Rushee,  
Well, it's time to go,  
Good night, Rushee,  
Well, it's time to go,  
We hate to leave you  
But we really must say  
"Goodnight, Rushee, Goodnight!"

## "Pat" Songs

*Air: "Irish Wash-Woman"*

*Upsilon and Theta*

1. "Pat", says she,  
"What", says he.  
"Tell me the truth", says she,  
"What do you think is this the best fraternity?"  
"Sure" says he.  
"That's easy, easy to say", says he,  
"Nothing is in it with K, K.G."

CHORUS:

Oh Kappa, Kappa Kappa Gamma,  
I'm so happy that I am a  
Kappa, Kappa Kappa Gamma,  
Nobody knows how happy I am.

2. "Pat" says she.  
"What", says he.  
"I've seen the kite." says she,  
"Also the anchor and Arrow so bright", says she.  
"Say", says he,  
"Go easy, They are all right, you see,  
But, what you want is the Golden Key."

CHORUS:

3. "Pat", says she,  
"What", says he,  
"Please tell me true", says she  
"What would you think of the Wine and the blue on me?"  
"No, take them back with the gold & the black says he,  
"You'll want the two blues of K.K.G."

CHORUS:

## Cleopatra

*Air: "Melancholy Baby"*

Words by  
ALSION SMITH TATUM  
*Eta*

You've all heard of fairest Cleopatra,  
There's just one thing that worries me;  
Why did not the Kappas down in Egypt  
Make her a wearer of the golden key?  
All the lovely ladies through the ages,  
Have turned down orchids for the fleur-de-lis,  
Each one aspired to be a member, don't you see?  
Of that most famous order K.K.G.

Knights of old would wear no other colors  
Than the blue and blue that are Kappas' pride;  
And the great kings always wooed the Kappas,  
Who else would make a worthy monarch's bride?  
Louis the 14th always said the Kappas  
Were the loveliest girls he'd ever seen,  
King Edward left his throne, because he'd never known  
A Kappa girl that he could make his queen.



## And When We Tell You

*Air: "They Didn't Believe Me"*

*Epsilon Alpha*

And when we tell you how wonderful you are,  
You'll never believe it, you'll never believe it,  
That girls so fine could ever be  
United in fraternity  
And they all wear the little golden key.  
And when you wear one, and you're certainly going to wear one  
The proudest girl in this wide world you'll be,  
You'll never believe it,  
You'll never believe it's true,  
That from this great wide world we've chosen you.

## Won't You Go Kappa?

*Air: "Are You From Dixie?"*

*Gamma Nu*

Won't you go Kappa? I say, "go Kappa!"  
Please be a \* from \*\*  
Please do remember, in this September,  
Remember Kappa's longing for you;  
Now if you pledge we'll do our best  
To show you that you've done right,  
For we think to be a Kappa  
Is a delight;  
So please go Kappa, I say "go Kappa"  
'Cause we went Kappa too!  
Start decidin' - - -  
Won't you go Kappa, too?

\* Chapter Name

\*\* College Name

## SPECIAL OCCASION SONGS

### She Wears the Golden Key

Words and Music by  
CARL E. BOLTE, Jr.  
*Beta Theta Pi '51*

My love is sweet as her fleur-de-lis, as  
pure as its dew. My love is gentle  
as the sky that wears the Kap-pa blue; The  
years will never change my love, she means all the world to me. My  
heart belongs to her alone, she wears the gold-en key.

### Halls of Fame

*Air: "Gadeamus Igatur"*

*Pi*

Through the well known halls of fame,  
Stands a toast to every name.  
Fill the cup and lift on high;  
Sing we now unto the sky.  
To the proud names of this hall,  
We would add one - best of all;  
So we sing to K.K.G.  
Here's a toast to K.K.G.

Fill the cup up to the brim,  
With our hearts we all shall sing,  
Here's the key by which we stand,  
Hold it high throughout the land.  
To the honored fleur-de-lis,  
Blue of sky and blue of sea,  
So we sing to K.K.G.  
Here's a toast to K.K.G.

# Give Your Heart to a Kappa Girl

Written for *Kappa Kappa Gamma*  
by **LE ROY HALE**, 1946  
*Beta Theta Pi*

1st SOP. Give your heart to a

2nd SOP. Give your heart to a

ALTO Give your heart to a

Kap-pa girl. If your heart is a - lone.

Kap-pa girl, Kap-pa girl. If your heart is a - lone,

Kap-pa girl, Kap-pa girl. If your heart is a - lone,

She'll take it she'll try not to break it she'll prom-ise to

heart is a-lone She'll take it she'll try not to break it she'll prom-ise to

heart is a-lone She'll take it she'll try not to break it she'll prom-ise to

make it a part of her own Give your

make it a part of her own, part of her own Give your

make it a part of her own, part of her own Give your

love to a Kap-pa girl. Let this hap-pi-ness fill your

love to a Kap-pa girl, Kap-pa girl. Let this hap-pi-ness fill your

love to a Kap-pa girl, Kap-pa girl. Let this hap-pi-ness fill your

heart. So if your heart is will-ing And you think that love is

heart, fill your heart So if your heart is will-ing And you think that love is

heart, fill your heart So if your heart is will-ing And you think that love is

thrill-ing And if you just want love to start Then

thrill-ing And if you just want love to start, love to start Then

thrill-ing And if you just want love to start Then

give a Kap-pa girl your heart, give her your heart.

give a Kap-pa girl your heart, give her your heart.

give a Kap-pa girl your heart, give her your heart.

# My Kappa Gamma Sweetheart

Words and Music by  
HOPE HALBERG  
Gamma Omega  
Arranged by Connie Olney  
Theta

Kap - pa, — Kap - pa — Gam - ma — sweet - heart, I had a

dream of a sweet - heart, Tell me who is she, — Her eyes were blue like

mine that's true they meant joy I knew, like me, like you! Her smile held the

hint of a prom - ise, did she smile as I do now? — Yes, and her sweet lips

held a warm ca - ress, like mine; Oh yes! Could be me, I con - fess, You are

## CHORUS

my Kap - pa Gam - ma sweet - heart, I'm fall - ing in love with

you. — My dreams are all a - round you, Would that my

arms were too; — Your lips, your eyes, your sweet smile,

turn gray to Kap - pa blue, — Tell me it's true that you

love me, for I've set my heart on you, My Kap - pa

Gam - ma sweet - heart. — My sweet - heart of Kap - pa.

# When a Kappa Says She Loves You

Words by  
JULIE CRILEY  
*Delta Omicron*

Music by  
NANCY SHERWOOD  
*Delta Omicron*

When a Kap - pa says she loves you — She wants  
all the world to see. Your — gold - en  
jewel pin shin - ing Be - neath her Kap - pa Key; —  
— And the pass - ing years will strength - en Her true  
love and loy - al - ty, — You'll find that your two  
hearts beat — In just one key. —

## It's Time That We Parted

*Air: "The Bells of St Mary's"*

It's time that we parted, although we've just started  
To tell you of Kappa, the joys that she holds;  
We're loyal and true, and we're counting on you  
To keep a place within you heart  
For K.K.G.

Repeat - humming - pick up:

So, keep a place within your heart  
For K.K.G.

# Man of My Dreams


NORMA J. ALLISON  
*Rho*

Arranged by *Beta Chi*

I've found the one who's the man of my dreams.  
His joy is my de - light. — With his smile so sin -  
cere, voice that's mu - sic to hear, And the love in his  
eyes so bright. — He is the one who makes  
my dreams come true. Faith - ful I know I shall  
be. — He's the one I a - dore, he's the  
one I'll live for. 'Tis his pin 'neath my Kap - pa key.

# Kappa Dream Girl

Words and Music by  
CATHERINE ALLISON CHRISTIE  
Iota



Copyright MCMXXII by Kappa Kappa Gamma Fraternity  
Printed in the U. S. A.



geth - er our love and loy - al - ty. Now our two hearts are locked to -  
geth - er our love and loy - al - ty. Now our two hearts are locked to -

geth - er with a lit - tle gold - en, gold - en key;  
geth - er with a lit - tle gold - en key; Oh my

Lit - tle Kap - pa Dream Girl is the Dream Girl for me!  
lit - tle Kap - pa Dream Girl is the Dream Girl for me!

# Sweetheart of K. K. G.

Beta Pi

Sweet - heart, sweet-heart of mine, And sweet-heart of K. K.

G. — Sweet - heart, say you'll be mine.

Mine for all time to be — Say that you'll love me when

we're gray and old; Say that you'll cher-ish this dear badge of gold Sweet -

heart, sweet-heart of mine, And sweet-heart of K. K. G. —

# Kappa Man

Serenade Song

This song may be sung a capella.

Words and Music by  
SHIRLEY HARGISS ♪  
Re-arranged by C.A.C.

1. When we say Good  
2. When we say Hel

1. When we say Good  
2. When we say Hel

bye Re-turn just as soon as you can The stars are  
lo You came just as soon as you could Wheth-er in the

bye Re-turn just as soon as you can The stars are  
lo You came just as soon as you could Wheth-er in the

safe - ly guid - ing back a Kap - pa man When we  
air or on the sea as we knew you would Then we

safe - ly guid - ing back a Kap - pa man  
air or on the sea as we knew you would

say Good luck! It's more than just our plan  
wreathe a prayer For guid - ance in our plan

When we say Good luck! It's more than just our plan  
Then we wreathe a prayer For guid - ance in our plan

For the fates are al - ways smil - ing on a Kap - pa  
And the fates that al - ways smile up - on a Kap - pa

For the fates, are al - ways smil - ing on a Kap - pa  
And the fates that al - ways smile up - on a Kap - pa

1 2  
man, man, a Kap - pa man.

man, man, a Kap - pa man, a Kap - pa man.

# Loving Cup Song

Chi

Arrangement  
by CLEORA C. WHEELER

Here's to you,\* \_\_\_\_\_ Here's to you, my loy-al friend, Here's to

you with all our hearts; And while we're in your com - pa - ny, We'll

sing be - fore we part, Here's to you,\* \_\_\_\_\_

\* Name to be inserted here.

May be used at the last dinner of the year. A loving cup is passed by each member to the one next, each holding a handle as the song is sung to the one who takes it.

Music Copyrighted 1914 by Cleora Wheeler - Used by permission.

# That Kappa of Mine

Eta

Have you, ev - er lov'd an - y oth - er lit - tle girl?  
 An - y oth - er girl but me? Have you ev - er kissed an - y  
 oth - er lit - tle miss? You must have to learn to kiss like this. Have  
 you ev - er held an - y oth - er lit - tle hand? He said, "Quite a few, For we  
 all have to learn and I did - n't want to prac - tice on a nice lit - tle Kap - pa like  
 you, Boom! Boom! there'll be noth - ing but sweet dreams, Boom! Boom! for that Kap - pa of  
 mine—Boom! Boom! there'll be noth - ing but sweet dreams, won't that be fine? There's a  
 high life, there's a low life, there's a bot - tle of wine and a jol - ly goodtime, Boom!  
 Boom! there'll be noth - ing but sweet dreams, Boom! Boom! for that Kap - pa of mine.



# A Kappa Toast

Beta Rho

Words and Music by  
HELEN BEIDERWELLE-HANSELMAN

The piano introduction consists of two systems of music. The first system has a treble clef staff with a whole rest and a bass clef staff with a rhythmic pattern of eighth notes. The second system continues the bass line with chords and a melodic line in the right hand.

Here's to all who wear a gold - en key, Who - e'er they are, what-e'er they

The musical notation for the first line of lyrics shows a vocal line with a treble clef and a piano accompaniment with a grand staff. The melody is simple and follows the rhythm of the lyrics.

be, Here's to ev-'ry Kap-pa in the land, To ev-'ry

The musical notation for the second line of lyrics continues the vocal line and piano accompaniment. The piano part features a steady accompaniment of chords.

mem - ber of our band. Here's to ev-'ry chap-ter in the east or in the west,

The musical notation for the first line of lyrics on page 63 shows the vocal line and piano accompaniment. The piano part has a more active accompaniment with eighth notes.

Here's to that fra-ter-ni - ty of them all the best, Kap-pa Kap-pa Gam-ma, here's to

The musical notation for the second line of lyrics on page 63 continues the vocal line and piano accompaniment. The piano part maintains the same accompaniment style.

you, Here's to your dark and to your light blue,

The musical notation for the third line of lyrics on page 63 shows the vocal line and piano accompaniment. The piano part features a steady accompaniment of chords.

Here's to friend-ship great and true, Oh Kap-pa, here's our toast to you.

The musical notation for the fourth line of lyrics on page 63 shows the vocal line and piano accompaniment. The piano part features a steady accompaniment of chords. The lyrics end with a period.

# Blue and Blue Are Waving

Origin Unknown

Blue and blue are wav - ing, Kap - pa here's to you. Though college days are  
end - ing, We'll be ev - er true. In our hearts we'll cher - ish,  
All the joys we knew. So to \* Here's our toast to you.

\*Insert chapter name

# A Toast To the Actives

SALLY CRANMER  
CAROLINE EMBRY TURNER  
Gamma Chi

Unison

A toast to the "Ac - tives," we think they are swell, And to  
cut a long sto - ry in two. We'll say that if they had been  
"rush girls" like us We might have pledged them, too!

# Sing We

Words by  
ELLEN JANNEY  
Chi

Air: "I Love You in the Same Old Way"

Sing we of the dark and light blue, Sing we of the fair flow'r the fleur-de - lis, Here's to  
\* of Kap - pa Kap - pa Gam - ma Here's to all the girls who wear the gold-en key.

# Chapter Toast

Air: "Arrawana"

Chi

\* chap - ter of Kap - pa Kap - pa Gam - ma  
Here's our toast to you. Here's to the blue and blue the  
owl, the key, the fleur-de - lis are em - blems of our loy - al - ty to  
this fra - ter - ni - ty. So all to - geth - er \*  
chap - ter, Here's to K. K. G.! Whee!

\*Insert local chapter name.

# Banquet Song

Air: "In the Gloaming"

Gamma Gamma

On the banquet boards the candles now are buring dim and low,  
As they flicker, fondest men'ries softly come and softly go,  
And we think of other Kappas, who in friendship long ago,  
Drew a circle so we love them,  
Love those girls we may not know.

When again the circle opens and the future candles burn,  
Other daughters of Minerva will in thought to us return.  
May they find us still as loyal to the emblem that we bear,  
Find the bond of Kappa stronger,  
Find the name of Gamma fair.

# Kappa Hymn

*Pi Chapter  
Pledge Class '49*



Pure gold-en keys that sym-bol-ize our love. Strong loy-al hearts that  
al-ways will be true. Kap - pa thy friend-ship for - ev - er cher-ished be.  
Thru joy and tears we'll al-ways cling to thee. Kap - pa thy spir - it will  
guide us our lives thru. We pledge our-selves to keep our hearts bound to you.

## Panhellenic Song

*Air: "America the Beautiful"*

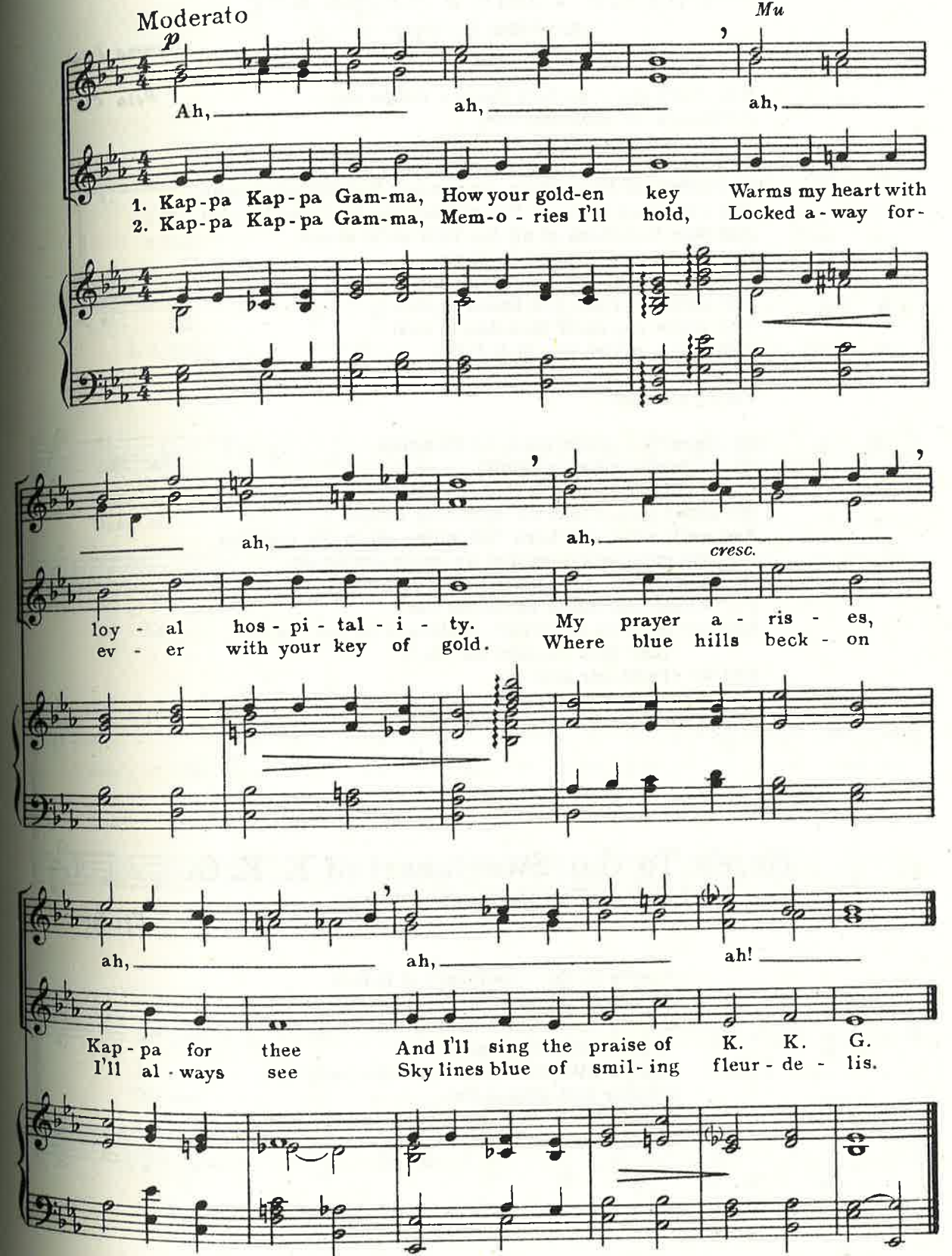
PHYLLIS McGINLEY  
*Delta Eta*

Now hand in hand,  
Like sisters, stand,  
And give no faltering grip,  
With common voice, let all rejoice  
In this companionship.  
Our comradeship is deep and good,  
So, let the goal we seek -  
Forever be fraternity  
When Greek is met with Greek.

# Kappa Prayer\*

Words and Music by  
MARY CATHERINE STIER, '42  
*Mu*

Moderato



Ah, ah, ah,  
1. Kap-pa Kap-pa Gam-ma, How your gold-en key Warms my heart with  
2. Kap-pa Kap-pa Gam-ma, Mem-o - ries I'll hold, Locked a-way for-  
ah, ah, *cresc.*  
loy - al hos - pi - tal - i - ty. My prayer a - ris - es,  
ev - er with your key of gold. Where blue hills beck - on  
ah, ah, ah!  
Kap - pa for thee And I'll sing the praise of K. K. G.  
I'll al - ways see Sky lines blue of smil - ing fleur - de - lis.

\*This beautiful song may be sung in unison, by omitting the top line of harmony.

## Picture There a Kappa Key

*Air: "Tea for Two"*

*Gamma Iota*

*Beta Chi*

Why can't you - picture there a Kappa key,  
From now on adorning thee,  
Emblem of the loyalty we share.  
Friendship forever, that time cannot sever,  
Memories so true, dear, are meant just for you, dear,  
The two blues we care for will always be there for you.  
And then just think of all the joys we'll share  
If you will just consent to wear  
The emblem of our own fraternity.  
The thrill that you are bound to feel  
Will make you know that this is real -  
Wearing a golden key of K.K.G.

**Patter Chorus:**

Of course we never fuss, or disagree,  
We're just one happy family  
By looking you can tell that instantly.  
We never forget that we're lovely ladies,  
And we'll wear our keys 'till we're all in the eighties,  
We love quiet evenings and we study endlessly.  
Because we're nice, we never even swear,  
For things like dates we do not care  
And our favorite beverage, believe it or not, is tea  
(Oh! how we love our tea!)  
And we credit our success  
To the fact that we possess  
A tiny little golden Kappa key. See!

## Here's To the Sweetheart of K. K. G.

*Air: "The Maine Stein Song"*

*Upsilon*

Here's to the sweetheart of K.K.G.  
Here's to the aims he holds;  
Here's to the one who will ever be,  
True to the key of gold.  
Skilled with the football and the pen,  
Scholar and athlete too,  
Here's to the best all 'round college man,  
Loyal to blue and blue.

## GENERAL SONGS

### Echoing Dreams

ANN ELDER

*Iota*

1. Kap - pa Gam - ma (Ah) of friend - ships so true, Kap - pa  
2. Kap - pa Gam - ma we'll nev - er for - get, Kap - pa

1. 2. Hum - m - m. (Kap - pa) \_\_\_\_\_ Hm-m, Hum - m -

Gam - ma (Ah) the two hues of blue, Sym - bols fra - ter - ni - ty -  
Gam - ma we're glad that we met, And as the hour grows nigh -

m (Kap - pa) \_\_\_\_\_

the fleur - de - lis The gold - en key will ech - o con - stant - ly,  
(Ah) (Ah)  
to tell you good - bye And we have tried to show you Kap - pa.

will be (Ah) (Ah) (Ah)  
grows nigh

As sis - ters true, Kap - pa says, "We're glad to know you."  
The drift - ing, ech - o - ing dreams, The ech - o - ing dreams.

# Campus Memories

MARTHA TARDY HINEDALE  
*Delta*

With you we share these memo-ries of our times to-geth-er here Of the  
 laugh-ter and the fel - low-ship that have brought us near. We re -  
 call the days of for - mal rush and the Phi Psi's round-ball game. And the  
 wa - ter - fight in the back - yard will we ev - er be the same. The  
 night of the cor - o - na - tion ball we were near - ly dead. But  
 ev - 'ry - thing was won - der - ful from be - gin - ning to the end. The  
 sum - mer how we missed you and all our hearts of fun. For  
 Kap - pa you're the fin - est when all is said and done. The

owl the key the fleur - de - lis and the heav'n of Kap - pa blue. Re -  
 call to us these mem - 'ries of each Kap - pa fine and true.

# When the Lights Are Low

Adapted from an original  
*Theta* Song by  
Bonnie Daynes Adams  
*Delta Eta*

When the lights are low, my mem - 'ry  
 wan - ders so, For I'm dream - ing of col - lege  
 days, friend - ships so true will last al - ways,  
 Ev - er there will be, so ver - y dear to  
 me, Two shades of blue and a gold - en  
 key, And mem - 'ries of K. K. G. My K. K. G.

## Kappa, My One Devotion

*Beta Xi Chapter*

Kap - pa, my one de - vo - tion, — My love and loy - al - ty.  
 Kap - pa blue as the o - cean, All bound by one dear key. — The  
 days — we're all to - geth - er — Ne'er end — as years roll  
 by — True friend - ship love and faith - ful - ness — We'll cher - ish un - til the  
 day we die. — Kap - pa, my one de - vo - tion My love and loy - al - ty.

## We Wear the Golden Key of K. K. G.

Words and Arrangement by  
 JUDY HORN  
*Gamma Alpha*

Origin Unknown

We wear the gold - en key of K. K. G. Proud - ly  
 so that ev - 'ry one can see, We be - long to Kap - - pa,  
 Kap - pa Kap - pa Gam - ma. Kap - pa's blues come from the sky and sea.  
 And her flow'r is called the fleur - de - lis, Sis - ters now and  
 al - ways we will be, For we wear the key of K. K. G.

## Kappa Days

*Air: "The Ash Grove"*

Words and Arrangement by  
 TERRY EHMANN  
*Pi*

On the heart of each sis - ter lies one key that binds us, The  
 badge that re - - minds us of fra - ter - ni - ty days, Down  
 deep there's a friend - ship, that needs no con - ceal - ing, Our  
 hearts it re - - veal - ing, in so man - y ways; It is  
 here that we meas - ure each day with new pleas - ure, Our  
 friend - ships out - last - ing our col - lege - hood days; And  
 in the years af - ter, with tears or with laugh - ter We'll  
 al - ways re - mem - ber our dear Kap - pa days.

# Kappa Rhapsodie

Words by  
FRANCES JOHNSON DARGER  
*Delta Eta*

Music by  
MARIE BARKER NELSON  
*Delta Eta*

Slowly

1st & 2nd  
SOPRANO

1st & 2nd  
ALTO

When the sun - set fades and dusk of night draws

nigh, It's then I sing my Kap - pa lul - la - by.

When the night shades fall and stars shine up a -

bove, It's then I dream of Kap - pa Gam - ma's love.

As the moon - beams fill my heart with dreams, it

seems Kap - pa's light will shine for - ev - - er.

Oooh\_\_\_\_\_ oooh\_\_\_ and through it all I see, That

love binds us to our be - loved fra - ter - ni - ty, Kap - pa.

Doo\_\_\_ doo\_\_\_\_\_ doo\_\_\_ doo\_\_\_ doo doo doo. When the

night shades fall and stars shine up a - bove. It's

then I dream of Kap - pa Gam - ma's love.

# DREAMS

Words and Music by  
SUE SEALE  
Upsilon

Dreams heap-ing dreams keep-ing touched with the mem-ries of days now long past.

Dreams hm dreams hm touched mem-ries days past.

Dreams hm dreams hm touched mem-ries days past.

Walk-ing thru' blos-soms of fleur-de - lis, that grow as a blank-et of blue —

Walk-ing thru' blos-soms of fleur-de - lis, that grow as a blank-et of blue —

Walk-ing thru' blos-soms of fleur-de - lis, that grow as a blank-et of blue —

Brings back a thought and a mem-o - ry, dreams of the days we once knew —

Brings back a thought and a mem-o - ry, dreams of the days we once knew —

Brings back a thought and a mem-o - ry, dreams of the days we once knew —

Tho' we have part - ed and gone our ways, we're bound by the key that we love —

Tho' we have part - ed and gone our ways, we're bound by the key that we love —

Tho' we have part - ed and gone our ways, we're bound by the key that we love —

— Tho' bound in - to friend-ship of Kap - pa, it seems —

— Tho' bound in - to friend-ship of Kap - pa, it seems —

— Tho' bound in - to friend-ship of Kap - pa, it seems —

hm. — seems, we're drift-ing, drift-ing a - long in dreams.

hm. — seems, we're drift-ing, drift-ing a - long in dreams.

hm. — seems, we're drift-ing, drift-ing a - long in dreams.

D.C.



# MEMORIES

(a capella)

KAY HIBBARD, '39

BT

Re-arranged by Ann Crowthers, '45

BT

1st SOP.  
2d SOP.

Mem-'ry has paint-ed a pic-ture for me, One that will ne'er grow old —

1st ALTO  
2d ALTO

I hold it close, for it's dear-er to me Than an - y treas-ure of gold —

When I am lone - ly, when I'm blue, That smil-ing face brings joy a - new;

I found the an-swer to dreams cometrue, When first you come in - to view. —

## CHORUS

From my store house of dreams, Dreams that are dear - est to me — There

now comes a girl, a rar - est pearl, Whose heart wears a gold-en key —

She is the one for me, it seems. I've cho-sen her to be my queen; My hap-pi-

ness will al-ways be blest By my Kap-pa Girl of dreams, my girl of dreams.  
be blest

# The Girl I Love

(a capella)

Words by  
KAY HIBBARD, '39  
BT

Music by  
ANN CROWTHERS, '45  
BT

1. If you want to see a girl I love, Just come a -
2. — The blue and blue will al - ways be, Her col - ors

long with me; She wears a key up - on her heart, The true and strong; Now would - n't you be proud to say, "With

key of K. K. G. her I'll e'er be - long. —

# At the End of a Rainbow

Words and Music by  
*Pi Chapter*

At the end of a rain - bow, I found a  
gold - en key. I was search - ing for a blue - bird that would bring  
hap - pi - ness to me. Then a breeze that pass'd me whis - per'd  
the se - cret ten - der - ly. And now my  
heart is beat - ing the mean - ing of K. K. G.

# We Are Loyal (Round)

MARY ALICE KESSLER  
*Mu '47*

**1** We are loy - al mem - bers of Kap - pa Kap - pa Gam - ma  
**2** And the blues from skies a - bove fills our hearts with Kap - pa, **3** Kap - pa, Kap - pa,  
Gam - ma true **4** Sing your loy - al - ty a - new Our fra - ter - ni - ty  
We are loy - al mem - bers of Kap - pa Kap - pa Gam - ma!

# K. K. G.

Words and Music by  
BARBARA LA GASA  
*Beta Pi*

**1st SOP** K. K. G. you're the one on - ly one for me.  
**2nd SOP ALTO** you're the one for me  
You're my own my fra - ter - ni - ty you're my K. K. G. K. K.  
my fra - ter - ni - ty  
G. With the blue of the sky and sea And the owl and the  
blue of sky and sea, owl and  
fleur - de - lis you're my K. K. G. you're my K. K. G.  
fleur - de - lis, K. K. G. lis, K. K. G.

# Remember

*Air: "Rememb'ring"*

*Gamma Omicron*

Remember the girls of Kappa,  
Remember, when you're away,  
Remember the friends you've made here,  
And don't forget to come back some day  
Remember the Sigma Delta,  
The dark and the light blue,  
For you girls belong to Kappa,  
And Kappa belongs to you.

We'll remember you!

# We Sing To Thee

Words and Music by  
PAT ROGERS, '43  
Prukop, Gamma Lambda  
Arranged by C. A. C.

1st SOP.  
2d SOP.

Moth-er of friend-ship  
We sing to thee dear Kap-pa Gam - ma; Friend - ship so

true — In deeds that are lov-ing and kind — We will be

guid-ed by you. — It was our hap-py fate to have found you.

Ev - er in our hearts to be — And as the years roll a - long -

— We'll hon - or thy name in our song — May each mem-ber take pride in thy

fame, — Kap-pa Gam-ma, be proud of thy name — Thy —  
— name, — Thy — name, K. K. G.

# There's An Inspiration

Theta

There's an in - spir - a - tion in each gold-en key —

There's a true de - vo - tion to Kap - pa loy - al - ty —

There's a shin - ing sym - bol that means the world to me —

Bind - ing us in friend - ship, friendship in K. K. G. —

Our fond - est trees do not grow on gold - en wish - es

For day dreams must be the mag - ic To bring back those

Mem - ries that lin - ger hap - py mem - o - ries, constant and

We cher - ish mo - ments Kap - pa, spent with you. true,

# Witchcraft

If there were witch - craft I'd make two wish - es, A gold - en

key to wear up - on my heart. It is the one key

to hap - py friend - ship From which I wish I'll nev - er have to

part. But in this real world there is no witch - craft,

Pl Chapter  
(Freshmen of 41)  
Arranged by C. A. C.

# My Kappa Gam

Words and Music by  
NAN FULDNER WALKER  
*Beta Rho*

My Kap-pa Gam wears a gold-en key, And if you look there is  
one on me. We all are proud as a girl can be,  
And we are hap-py as you all can see. The key of gold worn by  
girls so true, Mi-ner-va of old, And the blue and blue the  
wise old owl with eyes for-lorn From these tra-di-tions K. K.  
G. was born. Sym-bol of light that all may see  
Our un-ion of fra-ter-ni-ty. Kap-pas who sing with

hearts so free, Cou-pled in per-fect har-mon-y,  
Kap-pas whose voi-ces are raised in cho-rus, Loud is our praise in the  
fes-tive song! Kap-pa thy glo-ri-ous name re-sound-ing,  
We who to K. K. G. be-long!

## That's What Kappa Means To Me

*Air: "The House I Live In"*

What is K.K.G. to me?  
The house, the girls, the golden key  
A certain word - sincerity,  
That is K.K.G. to me.

Chorus:

The house I live in  
The friendships dear to me  
Sisters all together  
Sharing love and loyalty  
They symbolize the meaning  
Of our golden key;  
The promise of tomorrow,  
That's what Kappa means to me.

# To Blue and Blue

Tune: "Finlandia"  
(a capella)

Words by  
MARY JANE McCARTNEY, '43  
Beta Rho Chapter

To blue and blue; to Kap - pa Kap - pa Gam - ma, We raise our

loy - al voic - es in thy praise. Thy gold - en key shall al - ways be the

sym - bol Of friend - ship true, of love that ne'er will die; To K. K.

G. we hum - bly pledge our hon - or; Our aim shall be to raise thy glo - ry high.

# Kappa Lullaby

(a capella melody for unison singing in 2d line)

B Φ Chapter

Hm \_\_\_\_\_ hm \_\_\_\_\_

1. Go to sleep, my hon - ey \_\_\_\_\_ To a Kap - pa lul - la - by \_\_\_\_\_  
2. Go to sleep, my hon - ey \_\_\_\_\_ To a Kap - pa lul - la - by \_\_\_\_\_

hm \_\_\_\_\_ hm \_\_\_\_\_

Kap - pa stars shine o'er you \_\_\_\_\_ 'Neath a Kap - pa's true blue sky \_\_\_\_\_ So  
Kap - pa love en - folds you \_\_\_\_\_ 'Neath a Kap - pa's true blue sky \_\_\_\_\_ So

hm \_\_\_\_\_ hm \_\_\_\_\_

here's a key to guide you \_\_\_\_\_ 'Twill guard you till you die \_\_\_\_\_ So  
go to sleep, my hon - ey \_\_\_\_\_ 'Mid the nod - ding fleur - de - lis \_\_\_\_\_ And

hm \_\_\_\_\_ hm \_\_\_\_\_ hm \_\_\_\_\_

sleep my hon - ey, sleep, my dear To a Kap - pa lul - la - by. \_\_\_\_\_  
I'll un - lock the land of dreams With my lit - tle gold - en key. \_\_\_\_\_

# Sing A Song Of Sixpence

Words and Music by  
JO ANNE HALBERT  
*Alpha*  
Arranged by C. A. C.

Sing a song of six-pence, and do your jump-in' jive, swing your arms and clap your hands in

glee You may think that I'm cra-zy, but man a-live, can't you

see it's my pride shin-ing out of me? Look at Ferd-in-and, the bull who would-n't fight; be-

neath the tree he smelled the fleur-de-lis. But the Kap-pa type he was-n't quite, tho' he

(hm—) knew it to be the best fra-ter-ni-ty. I know why the bees are buzz-in' I

8<sup>va</sup> (hm—) know why the bird-ies coo Take a look up in the heav-ens get a

load of that blue and blue! Sing a song of six-pence and do your jump-in' jive

swing your arms and clap your hands in glee! You may think that I'm cra-zy, but

man a-live, can't you see I'm the wear-er of the gold-en key!

# Kappa Colors Blue

MARGUERITE MORRIS FULLBRIGHT, '10  
Beta Xi  
Re-arranged by C. A. C.

1st & 2d SOP.  
1st & 2d ALTO

*mp*  
Kap - pa col - ors blue and blue, so dear to me, so dear to you;

Gold - en key and fleur - de - lis our hearts are true be - cause of you.

*cresc.* *dim.*  
Years are filled with mem - o - ry, dear sis - ter-hood of K. K. G.  
*cresc.* *dim.*

*p*  
Once a - gain we pledge our loy - al - ty and love, for all e - ter - ni - ty.  
*p*

# Kappas

Air: "Buttons and Bows"

Delta Sigma

East is east, and west is west  
And the right one you have chose,  
You'll just love the way we go with our  
Sweaters and skirts and ankle-length hose,  
Keys and rings and fraternity beaus.

You'll love the sight of Kappa girls  
Dancing where the hardwood grows,  
At a ball they're all decked out in their  
Strapless, backless, satin that glows!

You'll love them at ball games  
All wrapped up and set to yell,  
But you'll love them longer, stronger  
When you get to know them well.

So, join right in and take your place  
With a friendly true blue crowd,  
Laugh and sing like anything  
Shed your care and worry and trouble and doubt,  
Kappa friends are gathered about.

# Through the Years

Air: "Aura Lee"

Pi

Through the years there'll always be  
Many thoughts of you,  
Memories of friendships made,  
Loyal and so true,  
Owl and key, fleur-de-lis,  
Intertwined with blue,  
Symbols of our hearts remain  
Of K.K.G. and you.

# We'll Never Walk Alone

Air: "We'll Never Walk Alone" from "Carousel"

Words by  
JAN HARRISON  
Sigma

The dark and the light of the blues we share  
Our pledge pins colored hue,  
The owl, the key, the fleur-de-lis ....  
All symbols of love ever true.  
And on through the years  
Through joy and through tears  
May our hearts with you remain.  
And in the bond of K.K.G.  
We'll never walk alone,  
We'll never walk alone.



## Wise Old Owl

*Air: "Sentimental Journey"*

*Mu*

Wise old owl, they say he knows the story,  
"Bout the girls in blue and blue,  
Take a key and open wide his doorway,  
Then he'll sing his song to you.

'Long time ago they dropped a key from heaven,  
Fell into a golden sea,  
Angles came and vainly tried to find it,  
All they found were fleur-de-lis.

Chorus: Kappa, since that time it's turned to Kappa,  
We're the ones who've learned that Kappa  
Found a little key,  
And formed from it fraternity.

Now we know the wise old owl has noted  
The ancient legend of the key,  
Love and friendship often to be quoted,  
Have their heart in K.K.G.

Have their heart in K.K.G! (gradually softer)  
Have their heart in K.K.G!

## 'Till K. K. G.

*Air: "Til There Was You" from "The Music Man"*

Words by  
ROANNE WILLEY  
*Gamma Xi*

There were small golden keys,  
But I never knew their meaning,  
No, I never knew it at all,  
'Till K.K.G.

There were owls in the trees,  
But I never heard them hooting,  
No, I never heard them at all  
'Till K.K.G.

And there were flowers, the statuesque fleur-de-lis,  
They tell me,  
In sweet, fragrant meadows of blue and blue.  
There were girls everywhere  
Bound by friendship that is lasting,  
But it never was lasting for me,  
'Till K.K.G.

## Sing the Kappas

*Air: "The Whiffenpoof Song"*

*Beta Psi*

From the buildings on the campus to our own Fraternity,  
To the good old chapter room we know so well,  
Sing the Kappas all assembled with their glasses raised on high  
And the magic of their singing casts its spell.  
Yes, the magic of their singing of the songs we love so well,  
Not Thy Key, I Love You Truly, and the rest -  
We will serenade the blue and blue  
While life and voice shall last,  
We will pass - and just remember like the rest, - when

We were poor little gals who were all at sea,  
Baa, baa, baa.  
We were looking to find a fraternity  
Baa, baa, baa.

Gamma Phi, D.G., Alpha Chi  
Said, "Come on in", but we went right by,  
For we'd found out where we wished to be -  
K.K.G.

Now the fire is in embers, and the songs are low,  
K.K.G.  
As we look in dreams to the long ago  
K.K.G.

Heré we have found a friendship true,  
Happiness bound in the blue and blue,  
All we hoped or we dreamed 'twould be,  
K.K.G.

## The Kappa Blues

*Air: "Blues My Naughty Sweetie Gives to Me"*

*Theta*

Music in 1932 Song Book

There are blues you get from thinking  
of another girlie's sinking  
In the front seat of your best beau's  
motor car;  
There are blues you get from waiting  
while you wish that you were dating  
And you're thinking what a poor old  
maid you are;  
There are blues when your roommate's  
mean,  
Blues when you see the Dean, that gives  
your conceit such a jar;  
There are blues you get from dancing  
at assembly when some prancing  
Nut has just cut in on your affinity;  
There are lost of blues to worry you  
at University;  
But there are just two blues that I  
adore;  
The blue and blue I'm sighing for,  
The blues those Kappa Gammas gave to me.

## Wonderful, Wonderful K. K. G.

*Air: "Wonderful, Wonderful, Copenhagen"*

Wonderful, wonderful Kappa Gammas,  
Girls in the blue and blue,  
We're the best to-day,  
And we're here to stay,  
So we'll sing this song to you -- of  
Wonderful, wonderful Kappa Gamma  
Spirit of fraternity,  
Here's our golden key,  
It's our badge, you see,  
Oh, we're Kappa Gammas  
Wonderful, wonderful Kappa Gammas are we.

## House of Kappa

*Air: "Halls of Ivy"*

For we love the house of Kappa,  
Where we dwell secure tonight,  
May we always cherish her  
Through darkness and light;  
For we love each Kappa sister,  
And the creed that she upholds,  
And hope that we may worthy be  
To wear the key of gold.

## Oh, When I Hear the Name of K. K. G.

*Air: "Washington and Lee Swing"*

*Gamma Epsilon*

Oh, when I hear the name of K.K.G.  
And smell the flower sweet, the fleur-de-lis,  
My heart just beats, and beats, and beats some more,  
For Kappa Gamma's name I like, I love, adore -  
And I will always help each K.K.G.  
As long as life itself is given me,  
And I will always keep her at the top, at the top,  
K.K.G.

## Sisters, Let Us Sing Again

*Air: "Kentucky Babe"*

Words by  
COUGAN-DONOVAN  
*Chi*

Sisters, let us sing again the joys of friendship sweet,  
Friendship true and strong;  
All the love that fills our hearts when loyal Kappas meet  
Weave into out songs.  
Sing the blue we've borrowed from the depths of summer skies,  
Sing the blue we've borrowed from the calm lake's darker dyes,  
Sing our gold key gleaming,  
With its hidden meaning,  
Sing our love for thee.

Chorus:

Kappa dear,  
Once again our mystic vows we will all renew,  
Kappa dear,  
Once again we offer thee loyal hearts, and true.  
Thine forever,  
Bound together,  
In fraternity.

## Dream a While of Kappa

*Air: "Till We Meet Again"*

*Beta Zeta*

Dream a while of Kappa ever true,  
Dream of her and she will be with you,  
Dream of friendships through the years,  
Dream of days, their joys and tears.  
Now 'tis time that you and I must part,  
So take this dream and place it in your heart,  
Keep it dear until the time  
We will meet again.

## There Is a Little Golden Key

*Air: "There is a Tavern in the Town"*

*Upsilon*

There is a little golden key, golden key  
That bears the letters K.K.G., K.K.G.,  
To wear it is an honor you can see,  
It's very, very dear to me.  
'Tis a symbol of devotion,  
And you ne'er can have a notion,  
Of the pride I takin in wearing it,  
My Kappa key,  
So here's to Kappa and her key, and her key,  
To all who wear it let it be, let it be,  
The symbol of true love and loyalty,  
In every land, on every sea.