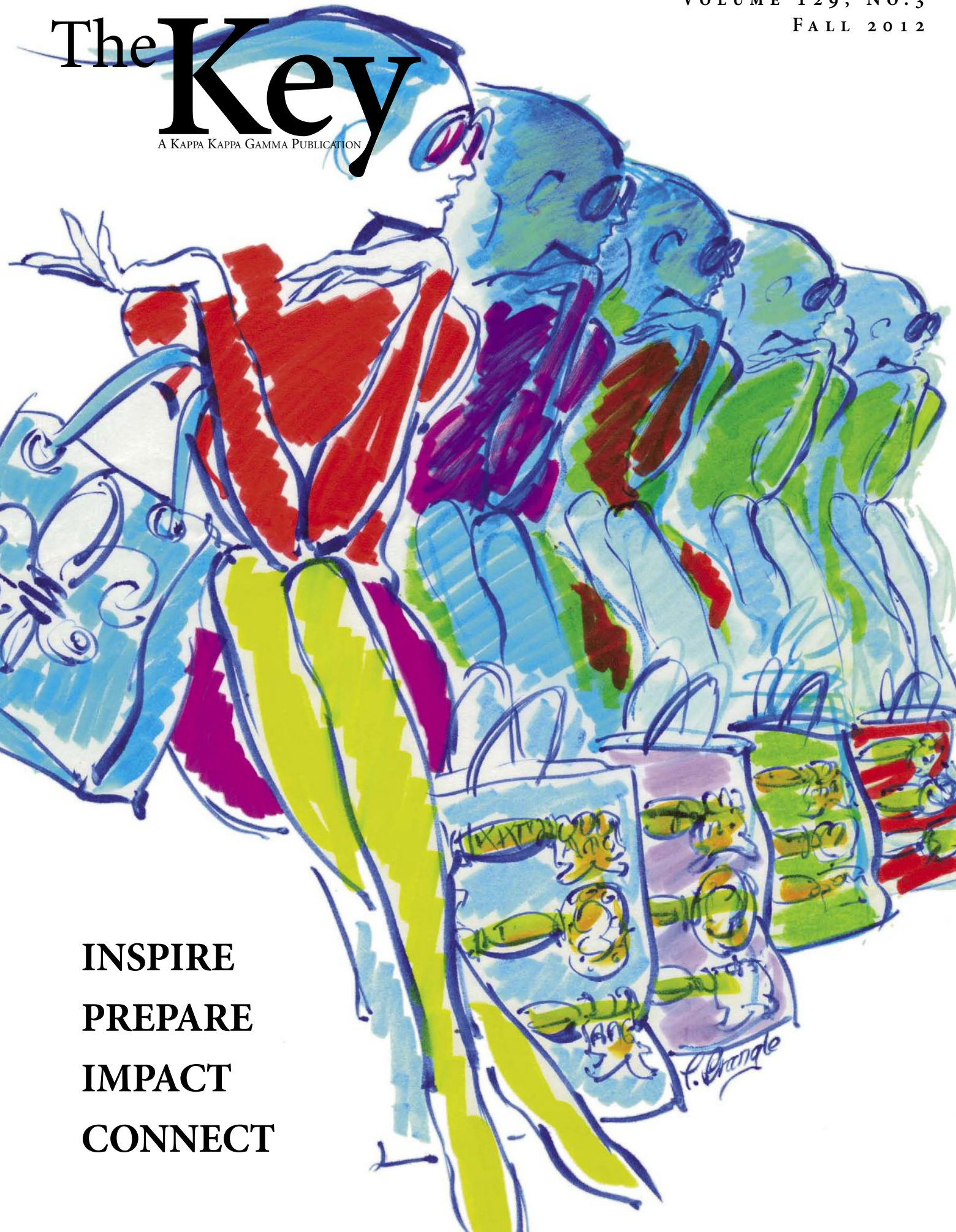


VOLUME 129, No. 3
FALL 2012

The Key

A KAPPA KAPPA GAMMA PUBLICATION



**INSPIRE
PREPARE
IMPACT
CONNECT**

The Key

A KAPPA KAPPA GAMMA PUBLICATION

Volume 129, No. 3
Fall 2012

The Key is the first college women's fraternity magazine, published continuously since 1882.

EDITORIAL BOARD

Editor

Kristin Johnson Sangid, *Georgia Southern*

Associate Editor

Kristen Desmond LeFevre, *Indiana*

Alumna News/Profiles Editor

Ann Graham Schnaedter, *Missouri*

Contributing Editor

Lois Catherman Heenehan, *Adelphi*

Contributing Editor

Melisse Campbell, *Mississippi*

Collegiate News Editor

Kate Greene, *Ohio State*

Editorial Board Chairman

Judy Stewart Ducate, *Texas Tech*

Fraternity Vice President

Elizabeth Bailey, *Mississippi*

Executive Director

Kari Kittrell

Director of Marketing and Communications

Ashley Gilbert Moyer, *Purdue*

Contributing Editor

Jenny Struthers Hoover, *Bowling Green*

Staff Photographer

Claire Davis, *Auburn*

Graphic Designer

Victoria McDonald, *Q.V. Design*

Printed by **The Watkins Printing Company**,
Columbus, Ohio

The Key (ISSN 1063-4665) is published quarterly by Kappa Kappa Gamma Fraternity, 530 E. Town St., Columbus, OH 43215. Printed in the United States of America, copyright Kappa Kappa Gamma Fraternity 2012. Subscription price is \$3.

Preferred periodical postage paid
at Columbus, Ohio

POSTMASTER:

Send address changes to

The Key

P.O. Box 38

Columbus, OH 43216-0038

CONTENTS

departments

- 2 President's Message**
Kappa in motion!
- 6 A New Voyage of Discovery**
A brand playbook, a new website, a fresh fleur—just like a new outfit, a new look helps us put our best face forward.
- 17 In Memoriam**
Honoring Those We Have Loved and Lost.
- 30 Foundation News**
Meet Museums Chairman **JULIE MARTIN MANGIS**; show Kappa loyalty by considering the Foundation in your estate plans.
- 34 Key Achievements**
Learn about an Olympic gold winner, Lucky Lil Darlings sitters, Luminous Breast Cancer Foundation and more!
- 42 Collegiate News**
Collegians have traveled the word this summer—Ghana, France, New Zealand and beyond!

On the Cover

Retired illustrator and artist **PAT BENNETT BRANGLE**, *Illinois Wesleyan*, interprets this issue's "style" theme. "I wanted to do a more contemporary look with a more energetic line and feel. So much art feels so static to me."—Pat Brangle

features



**Vanity Fair's
Punch Hutton:
On Making the
Perfect Pick**
PAGE 18

**Inspiring
Preparing
Impacting
Connecting**
How Nicole Gibbs
Balances It All
PAGE 24



Going Her Own Way
Lili Ruff's Instagram Self-Portrait
Wins Photo Contest
PAGE 46



The Key of Kappa Kappa Gamma links each member with the Fraternity. The mission of *The Key* is

- To inform, inspire and challenge
- To promote leadership, scholarship and friendship
- To sustain and nurture loyalty and interest
- To recognize the accomplishments of individuals, groups, the Fraternity and its Foundation
- To provide a forum for an exchange of information and opinion
- To be a permanent record.

Kappa Kappa Gamma Headquarters

P.O. Box 38
Columbus, OH 43216-0038

Phone: 866-554-1870 (866-KKG-1870)
Fax: 614-228-7809

Email Kappa: kkghq@kkg.org

Email *The Key*: thekey@kkg.org

Upload photos to *The Key*:
uploads.kappa.org

To **stop** receiving *The Key*, email kkghq@kkg.org or call Fraternity Headquarters at the number above. Please include full name.



www.facebook.com/kappakappagamma
www.facebook.com/TheKeyMagazine



www.twitter.com/kappakappagamma



www.linkedin.com
Keyword: Kappa Kappa Gamma



<https://www.kappa.org/KKGBlog.aspx>

Kappa in Motion

A highlight of Kappa's 69th Biennial Convention this June was meeting hundreds of delegates and representatives from all over Kappa—it was like seeing Kappa in motion. Hearing the ideas and questions and feeling the enthusiasm and excitement for Kappa was inspiring.

Remember the early part of *The Wizard of Oz* when Dorothy found herself in Oz and the screen went from black and white to Technicolor—the image of a bright new look at the world? With a new vision statement, Kappa is taking a new look at our world. *Kappa Kappa Gamma will empower women to pursue a lifetime of excellence.* This simple but clear statement helps us chart our own yellow brick road as we look toward 2020, our Sesquicentennial anniversary.

The path led to the creation of a new brand identity. Something was needed that was fresh, vibrant, building on the potential of every member—a brand that is livable—something to aspire to, creating an environment for women who want to aspire or for women who just want to be. To be given a chance, be the difference, be supporters. If you have not visited kappa.org recently, discover Kappa Kappa Gamma's new *aspire to be*.

Like Dorothy connecting with her pals the Tin Man, Lion and Scarecrow, Kappas want to connect with others, and we have found that we do that best by telling stories—telling the Kappa story. Our extension presentation does just that and is proving effective. Two new chapters will be established in California this spring at Cal Poly/San Luis Obispo and Chapman University in Orange, Calif., with two more to follow at North Carolina State and Mississippi State in 2016.

Reviewing our culture of giving, it was determined that Kappa is committed to promoting and encouraging giving—however our members choose to define it. Reading Is Fundamental remains our national philanthropy, promoting the value of literacy

and ongoing enjoyment of reading. Reading Is Key events have been successful for alumnae associations and chapters alike. Yet Kappas want to do more.

Our philanthropy strategy encourages members to take leadership roles in causes about which they are passionate. Local, national and global causes benefit from Kappa dedication and leadership. We aspire to live our ideals, to keep our values strong and use them in the larger and constantly changing community.

Change does not mean discarding the old. We are keeping memories and accomplishments by writing more stories. Kappapedia, a wiki site where Kappas can write our history online, keeps our history alive. All existing chapter histories are being transferred to Kappapedia, where you will be the storytellers of your own chapter's history and, soon, alumnae associations, too.

Mapping our journey, traveling our path, will be different from Dorothy's wanderings through fun and startling events. It will be different because our journey will be supported by Kappa values. With friendship, love, helpfulness, intellectual excellence and moral and social integrity, we empower women to pursue a lifetime of excellence. We aspire to be.

Loyally,



JULIE MARINE LESHAY,
Colorado College
Fraternity President
kkgpresident@my.kkg.org



Delta Chapter, *Indiana*, Celebrates 140 Years!

Founded October 12, 1872, **DELTA CHAPTER, *Indiana***, is Kappa's oldest continuous chapter. Let's join them in celebrating a milestone year by remembering some highlights of our ever strong and loyal Delta Chapter.

- The first official business meeting was on January 2, 1873. On February 5, badges were worn in public for the first time. (Women had been admitted to Indiana University just five years before, and Indiana was the first state university to take this step.)
- In October of 1876, a general Fraternity meeting convened in Greencastle, Ind. This Convention, commonly called the second, was really the first General Convention of the Fraternity. Our Constitution and Bylaws were reconstructed, and an initiation ceremony, offered by Delta, adopted.
- "The Kappa Pickers" singing group of Delta Chapter performed for USO tours, TV programs, Kappa Conventions and even made recordings.
- In 1957, Delta's 84-year-old *Red Book*, containing Delta meeting minutes from 1873 to 1889, and an

82-year-old badge were presented to the Fraternity. These treasures, as well as a hand-decorated ritual book, are on display at Fraternity Headquarters.

- Delta claims seven Alumnae Achievement Award recipients including the late **MADelyn PUGH MARTIN (DAVIS)**, TV scriptwriter and creator of "I Love Lucy," and **JANE PAULEY**, former *Today Show* anchor.
- Delta members have always been campus leaders and, in recent years, top competitors in the Little 500, the largest collegiate bike race in the U.S. Modeled after the Indianapolis 500, more than 25,000 people attend, with proceeds going toward scholarships. The 2012 Loyalty Award recipient is Delta alumna **MARTHA HAY STREIBIG**; see Page 11.

—*Excerpts from* The History of Kappa Kappa Gamma Fraternity, 1870–1976.



Delta Chapter members in 1955.

Meet Our 2012-2013 Field Repre

Leadership Consultants



WHITNEY ANDERSON, *Oklahoma State*
Major: biochemistry and molecular biology
Chapter Leadership: Vice President-Standards
Activities: Mortar Board, Homecoming Steering, Phi Kappa Phi, President's Leadership Council



CHARLOTTE RHODES, *SMU*
Major: economics and mathematics
Chapter Leadership: Risk Management
Activities: Mortar Board, Student Foundation, French Club



CHELSEA DYER, *Oklahoma State*
Major: public relations and Spanish
Chapter Leadership: President, Risk Management Chairman
Activities: Relay for Life Greek Recruitment Chairman, Homecoming Steering Committee Chairman, PRSSA



REBECCA SHAW, *Virginia Tech*
Major: industrial and systems engineering
Chapter Leadership: President, Philanthropy Chairman
Activities: Cru, assistive technology lab assistant, engineering mentor and undergraduate research



KIMBERLY KELLER, *New Mexico*
Major: philosophy and English
Chapter Leadership: Public Relations Chairman, Nominating Committee Chairman
Activities: student government and Panhellenic president



KRISTI WATTS, *Texas Tech*
Major: elementary education with specialization in English as a second language
Chapter Leadership: Panhellenic Delegate, Vice President-Standards, Nominating Committee Chairman
Activities: Chaplain VP of Greek Wide Student ministries, Zumba instructor, Habitat for Humanity, Sigma Alpha Lambda honor society



BRITT NELSON, *Colorado*
Major: finance
Chapter Leadership: Treasurer, Education
Activities: Order of Omega, intramural soccer, nanny



SARAH FORD, *Central Florida, to Cal Poly San Luis Obispo*
Major: event management
Chapter Leadership: President, Vice President-Organization
Activities: Rho Lambda, Order of Omega, Meeting Professionals International, National Association of Convention Management



JESSIE PEREIRA, *Santa Clara*
Major: anthropology and sociology
Chapter Leadership: President, Registrar
Activities: club field hockey, Relay for Life, Bay Area Women's Sports Initiative



ILIANA GARCIA, *New Mexico, to Central Florida*
Major: biology and Spanish
Chapter Leadership: President, Vice President-Standards, Risk Management
Activities: Who's Who Among College Students, Order of Omega, mentor at PB&J Family Services

Chapter Consultants

representatives



AVERY MANNING, *Washington State, to Villanova*
Major: psychology
Chapter Leadership: President, Vice President-Standards
Activities: Parks and Recreation and volunteer with YMCA youth programs



BRIANNE MCGANN, *San Diego, to UC Irvine*
Major: biology
Chapter Leadership: Marshal and Vice President-Standards
Activities: former Leadership Consultant, Panhellenic: vice president-recruitment and vice president-public relations



ANDREA SCHUG, *Minnesota, to Chapman*
Major: journalism
Chapter Leadership: President, Public Relations, Corresponding Secretary
Activities: Order of Omega, student newspaper reporter



ALLIE VUKOV, *Michigan State, to NYU*
Graduate Studies: communication, specialization in public relations
Chapter Leadership: Panhellenic Delegate, President
Activities: Panhellenic Council President, Order of Omega, Michigan State University Union Advisory Board, volunteering

Work for Kappa!

Applications for Leadership Consultant and Chapter Consultant positions for the 2013–2014 academic year can be found at kappa.org (navigate to Our Team under About Us). Applications are due November 1.

Fact or Fiction?

We are having Leadership Consultant (LC) visits because we are in trouble. FICTION

FACT: Each Kappa chapter receives at least one LC visit each year. The LC is a recent Kappa graduate who has been trained to educate and share best practices within our organization. The LC team often visits each chapter two times during the year in an effort for the Fraternity to provide support to our chapters.

The Leadership Consultant visits to tell us all of the things we are doing wrong and then tell our advisers, PDC and RDC. FICTION

FACT: LCs understand that all chapters face challenges. They also understand that chapters have wonderful programming and creative ideas. It is the job of the Leadership Consultant to share those great ideas with other chapters and Kappa volunteers. When they assist a chapter with a difficult issue, they consult chapter advisers and Fraternity volunteers in an effort to solve problems.

Being a LC must be an awesome job, as you get to travel to schools all year and go to parties with all of the different chapters. FICTION

FACT: An LC is a professional consultant. Each LC travels for 31 weeks of the academic year, visiting as many as 25 different campuses across the U.S. and Canada. She lives out of one large suitcase and one small suitcase, has some weekends off and stays with alumnae throughout the country. As a professional employee of the Fraternity, she is working in the areas of risk management, finance, training, public speaking and reporting, while multi-tasking and communicating with volunteers. The LCs are paid, salaried employees.


I would love to be an LC or a CC but I was only on Chapter Council one time, as the Corresponding Secretary, so I can't apply. FICTION

FACT: When looking for new members of the Field Representative team, Kappa looks at the whole candidate, not just her Kappa experience. Candidates should have served at least one term on Chapter Council, but the specific position is not a factor. The Fraternity is looking for a team and needs many different types of leaders to serve as Field Representatives.

Kappa Kappa Gamma,

Kappa Kappa Gamma 
aspire to be

We hope that by using a unified visual identity, our publics will glance at our materials and know, "That's Kappa."

 There is nothing like a makeover to lift your spirits and re-energize your soul. From a new hairstyle to a fresh coat of paint, a little change in the way things look can provide the motivation to get up and moving.

*While we do not tell our members what to be, we
do give them the tools they need to get there.*

Extreme Makeover Edition

This spring, Fraternity Council realized the time had come to update Kappa's visual identity. The tagline, Tradition of Leadership, and our beautiful key logo, had served us well for 10 years, but they were created when most of our resources were printed. Now that we communicate electronically, we need a visual identity that includes depth and pop. Building on our website work with Bigfish, we quickly discovered the premise that would guide us toward creating a livable, breathable brand: We wouldn't be the women we are today without our membership in Kappa. While we do not tell our members *what* to be, we do give them the tools they need to get there.

A branding committee and Fraternity Council considered several taglines and decided that "aspire to be" best portrayed what we had learned about our members' experiences and complemented our vision statement of "empowering women to pursue a lifetime of excellence." To update our look, the fresh fleur logo was designed to illustrate our desire to move onward and upward as an organization. A complementing Foundation logo was also developed to complete a unified new look. Four key messages were developed based on the discovery: inspiring, preparing, impacting and connecting.

The Brand Playbook is your guide to the new logo, fonts and color palettes. On the website in Members-General resources, you will find directions on fonts, and color swatches, downloadable logos and templates, as well as descriptions, proof points and media examples for each of the four key messages. For questions about brand usage, consult the playbook.

But where is the clip art? It is one of the most frequently asked questions, and the answer is that we no longer feature clip art. The reason is twofold: With our new brand comes an opportunity to start anew by always using Kappa's logo and tagline in our messaging. Think of corporate brands that everyone knows—Nike, Coca-Cola, and McDonald's. Every piece of communication uses the same logo, which is immediately recognizable. We hope that by using a unified visual identity, our publics will glance at our materials and know, "That's Kappa."

Also, it is nearly impossible to refresh Kappa clip art on a regular basis, so many of the images that we've offered have begun to look dated. If you find that you need clip art for a project, you can find many usable graphics by Googling "Kappa Kappa Gamma images."

To see Kappa's brand in action, visit our YouTube channel at www.youtube.com/kappakappagama.

Regardless of where we're going in life, Kappa can help us get there. From that very first moment when we share our hopes and dreams, we can count on our Kappa sisters to provide the encouragement and inspiration we need to start taking steps toward our ultimate goal. Together, we *aspire to be*.

*We would not be the women
we are today without our
membership in Kappa.*



Today's Voyage of Discovery

—By **BETH UPHOFF BLACK**, *Illinois Wesleyan*, Director of Programs and Education

Nine years. It doesn't seem so long ago, does it? But thinking about how technology has changed in nine years, it's almost unbelievable how far we've come. In 2003, phones were not smart, YouTube and Twitter did not exist, and iPads were just a twinkle in Apple's eye. When Kappa launched its new website that year, members of all ages and stages enjoyed the easy accessibility of resources and information that were available at the click of a mouse.

Navigate the New Website

*View Kappa's website tutorials at www.youtube.com/kappakappagamma.
From Kappa's YouTube, scroll down and select "tutorials."*

Starts at Kappa.org



Over time, the Kappa website's aging infrastructure began to crumble, and no amount of duct tape could patch the site together. Like an older-model car, the Kappa website was comfortable and familiar, but it was starting to require repair after repair, and it was a matter of time before it broke down completely.

It also did not offer the high-end accessories of a newer model, and we were painfully aware that a cosmetic makeover was in order, too.

After several months of interviewing potential vendors, last September Kappa embarked on a website redesign with Bigfish, Inc. and CSI. A committee began meeting to decide how the new site would look and feel, and it was determined that it should be transparent for users, social in nature, conversational in tone, fresh in look, and easy to use. Kappas and others could connect via stories, testimonials and social media. Design and functionality were considered, town hall meetings were held to solicit feedback and content was developed.

In June the project was completed, and a group of Kappa testers navigated pages and links prior to launch.

The public home page provides users with a quick and easy way to access many of the most popular items on the site. The Link Center in the lower left-hand corner includes easy access to several of the most frequently used resources, such as the membership reference form, the legacy notification form, RIF and *Pathways*. Prominent buttons across the top of the page allow users to quickly access the Foundation portion of the site, an easy way to make a Foundation donation and a link to Kappa shopping. Geolocation software enables site visitors to use a chapter locator, and the "Find a Kappa" feature allows members to

locate long-lost sisters, Kappas in their neighborhoods and more.

By clicking on the Member Login or Members link, users are directed to the member home page. Information on upcoming events and initiatives is located here, as well as the login area. Members who accessed the old website may use their previous login information, and first-time users are invited to create a new account.

Once members are logged in, the page that appears is determined by membership status. Alumnae are directed to the alumna page, while collegians go directly to the collegiate page. Based upon the position that a member currently holds, resources specific to that office are displayed. More resources may be added by bookmarking pages for easy reference. Clicking on the More Resources link serves an entire page of Kappa forms and manuals, sorted by officer and member type.

The new Kappa mobile site is designed for women on the go. When used on a phone or tablet, the mobile site provides access to the functionality and information members need as they go about their daily business. The same stories, resources and social media plug-ins found on the classic site are easily accessible, even when a laptop or desktop computer is not.

Our hope is that you find the new site easy to use and engaging. Tutorials on how to use the new site are available, and questions regarding login and usage may be directed to Fraternity Headquarters. As you peruse the website and read the inspiring stories of Kappas' triumphs, projects and lessons they've learned, we invite you to share your own stories of leadership, service and friendship. Not only does the new kappa.org provide the resources needed to do business, it also gives us one more way to stay connected as sisters.



2012-2014 Fraternity Officers

Fraternity Council



Julie Marine Leshay
Colorado College
President



Elizabeth Bailey
Mississippi
Vice President



Nancy Eyermann Foland
Tulsa
Treasurer



Lori Gilmore Miltenberger
Butler
Director of Alumnae



Collett Beers Rangitsch
Wyoming
Director of Chapters



Susan Pile
Miami (Ohio)
Director of Membership



Beth Uphoff Black
Illinois Wesleyan
Director of Programs
and Education



Sharon Pickrell Gober
Oklahoma State
Director of Standards

Regional Directors of Alumnae



Marsha McNeil Allbritton
Arkansas

Regional Directors of Chapters



Susan Poole Cooper
Texas A&M



Amanda Brown
Puget Sound



Jennifer Haughey King
Utah



Angela Disalvo
Iowa



Alison Kostek
Miami (Ohio)



Vikki Haag Day
Whitman



Selena Staley Myers
Akron



Ella Gaumer
UC Riverside



Lesley Dillon Lage
Akron



Jennifer Beardsley Fales
Kansas State



Linda Price Patton
Oklahoma State



Alicia Hayden
Central Florida



Hannah Meehan Spector
Utah



SUSANNAH ERCK HOWARD, *Florida State*, MARTHA ALLEN KUMLER, *Ohio State*, JULIE MARTIN MANGIS, *George Washington*, and MARTHA HAY STREIBIG, *Indiana*, gather during the 2012 Biennial Convention in Jacksonville, Fla..

Kappa Kappa Gamma's Highest Honor

Meet the 2012 Loyalty Award Recipient, Martha Hay Streibig

—By LOIS CATHERMAN HEENEHAN, *Adelphi*

“A quiet leader, who, when asked to accept a Kappa job always says, ‘whatever you want me to do.’”

This is the way friends and coworkers describe MARTHA (MARTY) HAY STREIBIG, *Indiana*, the 2012 recipient of Kappa’s most cherished award.

Established in 1956, the award honors HELENA FLINN EGE, *Pittsburgh*, Director of Alumnae 1944–48 and Fraternity President 1948–52. The highest honor bestowed on a member, the Loyalty Award recognizes years of devoted service and commitment to the Fraternity’s values.

Marty pledged at DELTA CHAPTER, *Indiana*, serving as Scholarship Chairman and as chapter President, while also taking part in campus activities such as the IU Student Foundation and Panhellenic. As an alumna, she served the CINCINNATI ALUMNAE ASSOCIATION as secretary and advised Personnel (now Standards), Membership and Chapter Council for BETA RHO^Δ, *Cincinnati*. She volunteered in the community as well, serving on PTAs in Cincinnati and Blacksburg, Va.

After four years as Lambda Province Director of Alumnae, Marty was asked to be Coordinator of Chapter Development for the new ZETA UPSILON CHAPTER, *Georgia Southern*. Fraternity Headquarters staff described Marty as having “a calm demeanor, never getting rattled or riled, a problem solver.”

The ability to work with others of all ages, remain calm and solve problems brought Marty to Fraternity Council as Director of Standards. From there and her next position as Director of Membership, Marty continued to impress everyone with whom she worked. They cite her willingness to take on any task, professionalism, and ability to stand her ground to accomplish a goal. In difficult circumstances, Marty could diffuse a situation and bring about a successful resolution. During her time on Council, the Fraternity developed mission statements for the Foundation and for Fraternity Headquarters, the *Kappa Leadership Guide* was published and the New Member program was developed.

A nurturer, Marty has a fierce loyalty to her family as well as Kappa. Husband Mike and three sons, as well as friends and several Kappa chapters benefited from Marty’s devotion. Her sense of humor is appreciated by many.

Continuing Kappa service, Marty was Field Representatives Chairman, guiding the young women who travel to chapters or do graduate work as they build leadership skills and talents in themselves and the chapters they nurture.

An approachable pillar of strength, team player and creative thinker, Marty’s quiet leadership and continuing acceptance of “whatever you need me to do” set the bar for Kappa loyalty. 🗝️

My Convention Experience

—By **JESSICA DOUCETTE, DELTA ETA, Utah**

When we landed in Jacksonville, Fla., for the 2012 Biennial Convention, we were greeted by watery air, Southern spirit and more than 1,000 Kappas in a sea of blue and blue. It was a week full of iced tea, learning, growing and, of course, owls, keys and fleur-de-lis. Initially planning to skip some workshops and head to the beach, we soon discovered there were too many classes we wanted to attend. From re-learning about ritual to strategic marketing, public speaking and social networking, the workshops offered information that is applicable beyond the walls of Kappa Kappa Gamma.

One of the most remarkable aspects of Convention was being surrounded by inspirational women who are successful not only in the Fraternity, but also in business, art and

philanthropy. As collegians, we were inspired and entertained by true-blue KKGs!

Convention reinforced that Kappa isn't just for four years, but for the rest of our lives. Knowing that Kappa is forever, my love and happiness for it grew more than I thought possible. Kappa has given me a sense of community until I am old and grey, and I am thankful for this place of security and friendship. Convention was an incredible experience that I will take with me to my chapter and beyond. I love Delta Eta Chapter and Kappa Kappa Gamma. 🗝️

Did You Miss Convention?

Resources and highlights are available online! Check out: www.kappa.org/2012convention

Thank You, Convention Sponsors!

Platinum

Digital Pix
Geico
Herff Jones
Duval County Tourist
Development Council
Kappa Kappa Gamma Foundation
MJ Insurance
The Container Store

Silver

Adam Block Design
Girly Greek Sisters
Hyatt Regency Jacksonville Riverfront

Bronze

Bigfish, LLC
CSI (Computer System Innovations)
Graystone Consulting
Toss Designs
Willis

Is the World a Friendly Place for Women?

The National Panhellenic Conference, of which Kappa Kappa Gamma is a member, is often consulted about negative images women face. It seems extraordinary that in 2012 we are still confronted with real challenges for women—such as lower pay than our male counterparts and a dearth of women leaders in Congress. Did you know that while women make up 51 percent of the U.S. population, they make up only 17 percent of Congress?

To punctuate both points, NPC is sharing with its member-groups a mission to help women counter negative images and stereotypes. *Miss Representation*, a 2011 Sundance documentary by Jennifer Siebel Newsom, is sparking a movement of sorts. The film explores how the media's misrepresentations of women contribute to the under-representation of women in positions of power and influence. It also poses the question for an ongoing conversation—are today's women really valued for their brains and their abilities?

The film has spawned a call to host screenings in workplaces, universities and schools. Our BETA ETA^A, *Stanford*, chapter and the Clayman Institute for Gender Research hosted a screening of *Miss Representation* on the Stanford campus. For information and resources, visit missrepresentation.org.

NPC is keenly aware of the negativity many women face, from specious sorority ranking systems that are often commercialized for profit, to stereotyping young women on reality TV with the promise of making them stars. As one of the largest U.S. advocacy groups for women, representing 4 million women, NPC is often dismayed to see our own members stereotyped and cast into the same disparaging role over and over again. Sororities have launched leaders in all professional arenas and continue to provide women a network of mentors and leadership opportunities for undergraduates and alumnae. 🔑

—Excerpted from a recent message by NPC Chairman Jane Sutton.

No matter how your hair was styled on Bid Day, you're still a Kappa. And we need your help to make sure those same great experiences are available for future generations of women! Can Kappa count on you to pay your alumna dues?

www.kappa.org/duesdirect



fraternity news

Dear Editor,

As a member of the Epsilon Phi Chapter, *Florida*, I wanted to give an update on ALI PICKARD, *Florida*, who was featured in the article “Living Inspired, Living Strong, Living Kappa” in the spring 2012 issue of *The Key*. In 2010, Ali—a non-smoker—was diagnosed with Stage IV non-small cell adenocarcinoma lung cancer. Many people may not know that lung cancer kills more people than breast and prostate cancer combined. Since her diagnosis, legions of her friends and sorority sisters have risen to support her in myriad ways, from donating money to help her take care of her expenses to sending her cards and Kappa-themed gifts.

One of the more meaningful ways my fellow Kappa alumnae have helped, however, has been by fundraising for and participating in “Free to Breathe” walks sponsored by Ali’s chosen charity, the National Lung Cancer Partnership. This fall, several Kappas began a fundraising campaign on Facebook and with friends and family to raise money for the November 10 walk in Orlando, Fla., in which more than 30 sisters are also participating. The original goal was \$1,000; as of Sept. 21, that goal was ratcheted up to \$10,000 and \$7,580 had been donated. As of this writing, a few Kappas are talking about lifting the bar to \$20,000—and they aren’t kidding.

I encourage all readers of *The Key* to stay updated on this phenomenal effort by visiting http://participate.freetobreathe.org/site/TR/RunWalk/General?team_id=22831&pg=team&fr_id=1720.

As for Ali, early this summer, the doctors said that there was nothing more that they could do for her medically, and she is now living under Hospice care. Yet she remains active and strong-willed, and her support system is just as determined to keep helping her by visiting her, taking her out, and posting pictures of tributes to her on Facebook. The fact that there are so many people who love and support Ali is a strong testament to her vibrant, courageous, and no-holds-barred nature. She is an inspiration to all.

Sincerely,

SHERRY ESTES BITHELL, *Florida*



ALI PICKARD, *Florida*

Letter to the Editor



Stars and Stripes

The STARS & STRIPES ALUMNAE ASSOCIATION was formed to benefit Kappa alumnae who are affiliated with the military. This group includes Kappas who are serving in the military, as well as Kappas who are spouses, parents or siblings of members of the military. The goal of the Stars & Stripes Association is to connect all military-affiliated alumnae to Kappa Kappa Gamma, no matter where they may be located. For more information, visit the Stars and Stripes Facebook page by searching "Kappa Kappa Gamma Stars and Stripes AA" on Facebook or visit their website at <http://associations.kappa.org/starsandstripes/>.

KAPPA KAPPA GAMMA
Tradition
 and **STYLE**

A. Snake Chain, 18", #SNAKE SS...\$18 GF...\$29
B. Pearl Accent Charm, #0041 SP...\$11 GP...\$11
C. Vertical Letter Lavalier, #L2647 SS...\$26 10K...\$56
D. Key Logo Charm, #3759 SS...\$26 10K...\$66
E. Coat of Arms Charm, #4011 SS...\$31 10K...\$65
F. Blue and Blue Badge with Enamel, #0116 10K...\$165
G. President Dangle, #0001 10K...\$32 GP...\$11
H. Blue and Blue Double Letter Guard, #J0203 10K...\$128 GP...\$68
I. Lucky Sister Bracelet, #CTS04 SS/GP...\$25.00
J. Split Shank Coat of Arms Ring, #7903 SS...\$87 10K...\$201
K. Signet Coat of Arms Ring, #737A SS...\$91 10K...\$292
L. Graduation Stole, #STOLE...\$30
M. Barrel Bead Bracelet, #BJ7295 SP...\$5
N. Barrel Bead, #BEAD SS...\$30
O. Wynter Ice watch, #WYNTERIC...\$40
P. Stack Ring, #335GR ST...\$50 (Whole sizes 6-9)
Q. Faux Leather Cuff Bracelet, #B4212 SP...\$25

Chain sold separately.
Charms each sold separately.
Badge, guard and dangle are all sold separately.
Bracelet and bead sold separately.

HERFF JONES

New!

TO ORDER:
 visit www.HJGreek.com or call
1.800.422.4348

f Find us on Facebook: www.facebook.com/hjgreek

K - karat yellow or white gold, SS - sterling silver, GP - gold-plated, SP - silver-plated, ST - stainless steel. Items may not be shown actual size. Prices subject to change.

How to Submit Your Story

Photos, stories or member news may be emailed to thekey@kkg.org or uploaded at uploads.kappa.org. The upload tool is convenient for submitting multiple photos or very large photos. Hard copy photos (prints) may be mailed to Kappa Kappa Gamma, Attn: The Key, P.O. Box 38, Columbus, OH 43216. If the original photo is digital, we recommend that you email or upload it rather than printing and mailing due to quality issues.

Tips for Photos

Set your camera to take large images. If you are not certain how to do this, look in your camera settings and choose the setting that allows you to take fewer photos.

- ▶ **Do not resize** or optimize your images.
- ▶ **Do not crop**. If your photo needs cropping, note it when submitting.
- ▶ **Best photos**: outside lighting or well-lit indoors, avoid lights shining from behind, show action or creative composition and no beverages.
- ▶ **Most needed**: philanthropy, sisterhood, academics, hobbies, events, KKG and campus spirit, Panhellenic spirit, Advisory Board/House Board, behind the scenes (like study night or exam prep),

on campus, internships, volunteerism, alumnae association events, intergenerational Kappas.

More Tips

Facebook photos do not work in *The Key* unless you send the original image, not directly from Facebook.

Instagram photos only work in *The Key* if you took a large photo (see your camera settings) and attach the original large image. For more tips about high resolution Instagram photos, visit Instagram's help center at www.instagram.com.

Don't have a high resolution image? Submit your photo anyway because we might be able to use it on the website, blog or social media.

SB
SCHOOL
BEADS

KAPPA KAPPA GAMMA

- STERLING SILVER BEADS & JEWELRY
- BEADS FIT MOST PANDORA
STYLE BRACELETS

TO SEE FULL LINE PLEASE VISIT
SCHOOLBEADS.COM
PO BOX 91 CLAWSON, MI 48017 (248)548-4855

OFFICIAL LICENSED PRODUCT

In Memoriam

Honoring Those We Have Loved and Lost

These names were submitted to Fraternity Headquarters between May 3 and Sept. 1, 2012.

AKRON, UNIVERSITY OF
Weber, Mary McMorrow, '50, d. 05/12

ALABAMA, UNIVERSITY OF
Dillon, Robbie Moseley, '49, d. 12/11
Kersting, Bibber George, '36, d. 08/12

ALLEGHENY COLLEGE
Sood, Patricia Miller, '54, d. 08/12
Williams, Emma, '40, d. 10/11

ARIZONA STATE UNIVERSITY
Barnson, Christina Georgas, '59, d. 02/12

ARIZONA, UNIVERSITY OF
Gordon, Phoebe Watson, '31, d. 06/12
Liggett, Elizabeth Shellenberger, '46, d. 05/12
McMillan, Jamie, '61, d. 08/12

ARKANSAS, UNIVERSITY OF
Childress, Gailly Stilwell, '57, d. 05/12
Dawson, Ann Patton, '58, d. 05/12
Richards, Nancy Newland, '39, d. 07/12

BAYLOR UNIVERSITY
Jenkins, Vernelle Burnett, '78, d. 05/12

* **BOSTON UNIVERSITY**
Loynes, Constance Gardner, '56, d. 06/12

BUCKNELL UNIVERSITY
Holzer, Kimberly, '87, d. 06/12

BUTLER UNIVERSITY
Digman, Mary Humphreys, '33, d. 07/10
Nichols, Nan, '58, d. 07/12

CALIFORNIA, U. OF, LOS ANGELES
Ellis, Ruth Nugent, '42, d. 05/12
Farrow, Alice Martin, '56, d. 03/12

CARNEGIE MELLON UNIVERSITY
Lloyd, Betty Schoenberg, '68, d. 07/12

CINCINNATI, UNIVERSITY OF
Albers, Mary Peoples, '37, d. 02/10
Benham, Jean Murphy, '33, d. 06/12
Haessler, Patricia Gocker, '47, d. 06/12

COLORADO COLLEGE
Anderson, Glenna Ebersole, '48, d. 11/08
Billet, Dorothy Godwin, '42, d. 12/10
Liddle, Evelyn Johnson, '40, d. 01/12
Lochridge, Mary Haney, '40, d. 08/12
Murphy, Adelaide Rogers, '50, d. 10/11
Pringle, Elizabeth Lamb, '44, d. 07/10
Wehrle, Barbara Prechtel, '49, d. 08/12

COLORADO STATE UNIVERSITY
Saulcy, Judith Evans, '57, d. 08/12

COLORADO, UNIVERSITY OF
Copeland, Donna DeVol, '59, d. 07/12
Hickey, Bonnie Northcutt, '38, d. 05/12

CONNECTICUT, UNIVERSITY OF
Bigler, Lorinda Jennings, '62, d. 05/12
Bower, Elaine Olsen, '47, d. 04/11

CORNELL UNIVERSITY
Knapp, Jacqueline Frost, '43, d. 05/12
Ryder, Marjorie Millison, '39, d. 11/08

DENISON UNIVERSITY
Seelbach, Martha Thompson, '41, d. 05/11

DEPAUW UNIVERSITY
Higbie, Mary Frances Tobias, '46, d. 05/12
Neff, Ann Bash, '45, d. 09/05

DUKE UNIVERSITY
Black, Lucie Gregg, '39, d. 06/12
Harper, Helen Miner, '40, d. 02/12

FLORIDA STATE UNIVERSITY
Manly, Felicia Lewis, '61, d. 06/12

GEORGE WASHINGTON UNIVERSITY
Diehl, Patricia Dryden, '63, d. 07/12

HILLSDALE COLLEGE
Hague, Barbara Bleser, '51, d. 08/12

IDAHO, UNIVERSITY OF
Dinwiddie, Janet Brookover, '37, d. 05/12
Jones, Anna Margaret Sellars, '41, d. 05/12

ILLINOIS WESLEYAN UNIVERSITY
Akerly, Nancy Fearheiley, '49, d. 07/07
Jarecki, Tamara Lartz, '57, d. 05/12

ILLINOIS, UNIVERSITY OF
Deem, Nancy Wheeler, '35, d. 06/12
Soltau, Bobette Speckhart, '66, d. 01/08
Umlauf, Angeline Allen, '34, d. 06/12

INDIANA UNIVERSITY
Fox, Anne Ingram, '48, d. 06/12

IOWA STATE UNIVERSITY
Dunbar, Elizabeth Collins, '46, d. 05/12
Guernsey, Jean, '49, d. 05/12

IOWA, UNIVERSITY OF
Leasure, Marjorie Weaver, '41, d. 07/12
Metz, Ruth Oswald, '47, d. 08/12

KANSAS STATE UNIVERSITY
Finn, Kathleen Anderson, '67, d. 09/09
Hitt, Susan Lovell, '48, d. 05/12
Stoskopf, Keeta Strong, '34, d. 06/12
Zimmerman, Patricia Davis, '47, d. 11/08

KANSAS, UNIVERSITY OF
Crosby, Marjorie, '47, d. 07/12
Drewry, Josephine Stuckey, '47, d. 05/12
Hoffmans, Sharron Dye, '57, d. 06/12
Murray, Cynthia Burnett, '68, d. 08/12
Nichols, Marty Dodge, '33, d. 05/12
Wilhelm, Virginia Shelden, '37, d. 06/12
Zimmerman, Mildred Hobbs, '51, d. 04/12

KENTUCKY, UNIVERSITY OF
Bohan, Margaret Wharton, '43, d. 07/12
Cherry, Ann Dedman, '34, d. 07/12
Field, Natalie Patton, '39, d. 05/11
Kinkead, Elizabeth Zimmer, '37, d. 08/12

* **MARYLAND, UNIVERSITY OF**
Cooper, Reba Ensor, '29, d. 08/12
Schenke, Mary Moran, '46, d. 07/12
Stamer, Helen Bedell, '39, d. 02/05

MASSACHUSETTS, UNIVERSITY OF
Ryder, Nancy Olivier, '63, d. 07/12

MIAMI, UNIVERSITY OF
Orrick, Jillian, '01, d. 08/12

MICHIGAN STATE UNIVERSITY
Crandall, Susan Royce, '67, d. 03/12
Crouchley, Marilyn Sumner, '49, d. 04/12
Rutherford, Margaret Lynch, '50, d. 07/12
Whipp, June Laird, '47, d. 05/12

MICHIGAN, UNIVERSITY OF
Stein, Barbara Nixon, '44, d. 05/05

MINNESOTA, UNIVERSITY OF
Goodsill, Ruth Caley, '41, d. 10/11
Hibbard, Jane Goodsill, '42, d. 10/11
Jeronimus, Betty Almars, '36, d. 07/05
Murray, Geraldine Hanrehan, '53, d. 05/12

MISSOURI, UNIVERSITY OF
Boeshaar, Patsie Tucker, '44, d. 06/12
Shoemaker, Glenda Hickman, '54, d. 04/12

MONMOUTH COLLEGE
Barnum, Jeane Lundquist, '39, d. 07/12
Campbell, Patricia, '51, d. 06/12
Jones, Marion Austin, '47, d. 11/11
Lind, Tink Turner, '36, d. 06/12
Marshall, Rose Ericson, '42, d. 07/12

MONTANA, UNIVERSITY OF
Black, Donna Stephan, '50, d. 08/12
Boyle, Sandy Sterling, '46, d. 08/12
Gibson, Jacqueline, '60, d. 10/11
Graessle, Sarah Amos, '59, d. 07/12
Green, Toby, '65, d. 08/12
Hamilton, Marianne Koskimaki, '56, d. 08/12
Roache, Barbara Rounce, '46, d. 08/11
Schultz, Audrey Kramis, '46, d. 03/12

NEBRASKA, UNIVERSITY OF
Boslaugh, Elizabeth Meyer, '38, d. 06/12
Houseman, Elizabeth Ackerson, '49, d. 05/12

Jetter, Virginia Turner, '45, d. 05/12
Phillips, Joan Selleck, '49, d. 07/12
Thomas, Margaret Mascheites, '48, d. 05/12

NEW MEXICO, UNIVERSITY OF
Bobbitt, Elizabeth Osterhaus, '34, d. 05/12
Hays, Marie Jensen, '33, d. 07/12

NORTH CAROLINA, UNIVERSITY OF
Eaker, Katherine Gilliam, '70, d. 07/12

* **NORTH DAKOTA STATE UNIVERSITY**
Brennan, Jane Cumming, '42, d. 01/12

NORTHWESTERN UNIVERSITY
Brown, Joanne Shaffer, '47, d. 07/00
Treacy, Cathleen Wiechert, '41, d. 02/05
Zinn, Rebecca, '93, d. 06/12

OHIO STATE UNIVERSITY
Conlon, Mary Eidson, '46, d. 07/12
Gieringer, Peggy Schantz, '57, d. 11/10
Mason, Margaret Edwards, '40, d. 06/12
McMeekin, Regina Schreel, '31, d. 04/12
Tingley, Jean Armitage, '39, d. 02/12

OHIO WESLEYAN UNIVERSITY
Schuele, Karen Nelson, '51, d. 07/12
Ventres, Sally Stevenson, '48, d. 06/12

OKLAHOMA STATE UNIVERSITY
Adams, Patricia McCall, '50, d. 06/12
Akin, Sally Duffy, '64, d. 07/12
Mitchell, Debbie Fenton, '83, d. 06/12

OKLAHOMA, UNIVERSITY OF
Bonfield, Helen Jordan, '44, d. 08/12
Foster, Mary Wood, '41, d. 05/12
McCarren, Sally Morgan, '63, d. 06/12
Mullen, Rosemary Newby, '45, d. 07/12
Singleton, Dorothy Ecton, '39, d. 05/12

OREGON STATE UNIVERSITY
Carter, Irene Etter, '37, d. 05/12
Kaiser, Katherine Clary, '49, d. 05/12
Ronne, Sylvia Skewis, '39, d. 05/12

PENNSYLVANIA STATE UNIVERSITY
Cahill, Audrey Hartley, '43, d. 11/08
Eshelman, Tara Boyle, '81, d. 05/12
Sharp, Beth, '70, d. 07/12

* **PENNSYLVANIA, UNIVERSITY OF**
Highland, Barbara Brennan, '42, d. 02/12

PITTSBURGH, UNIVERSITY OF
Cyphers, Melba Johns, '43, d. 05/12

* **PUGET SOUND, UNIVERSITY OF**
Ward, Linda Gowdy, '66, d. 03/12

PURDUE UNIVERSITY
Dubs, Katherine Stuart, '50, d. 05/02
Pryser, Anne Moore, '42, d. 06/12
Smith, Marcia Lyda, '49, d. 06/12

ROLLINS COLLEGE
Whitlock, Mary Weaver, '39, d. 07/03

* **SAN JOSE STATE UNIVERSITY**
Bonar, Eleanor Acuff, '48, d. 08/10
Simpkins, Phyllis Forward, '49, d. 07/12

SOUTHERN METHODIST UNIVERSITY
Bickel, Mildred Nettle, '51, d. 07/12
Derum, Virginia Williams, '51, d. 06/12
Harrell, Jeanne Wallace, '47, d. 05/12
McCloud, Ruth Pollock, '33, d. 05/12

ST. LAWRENCE UNIVERSITY
MacDonald, Nancy Leader, '64, d. 07/10
Wheeler, Marilyn Merrill, '42, d. 07/12

STANFORD UNIVERSITY
Cockroft, Helen Warson, '36, d. 10/09

SYRACUSE UNIVERSITY
Gere, Jean Yarwood, '43, d. 04/04
Honey, Miriam Lambdin, '45, d. 05/12
Hunt, Martha Pankau, '34, d. 06/12

TEXAS CHRISTIAN UNIVERSITY
Bolling, Nancy Lawrenson, '57, d. 12/10
Stewart, Paula Leslie, '63, d. 04/12

TEXAS TECH UNIVERSITY
McMahon, Helen Pemberton, '53, d. 03/09
Wheeler, Erin, '01, d. 02/11

TEXAS, UNIVERSITY OF
Daniel, Corinne Talley, '37, d. 02/08
Garrett, Catharine Hill, '48, d. 04/12
Hieronymus, Dorothy Runge, '35, d. 06/12
Kramer, Martha Watson, '48, d. 12/11
McGuigan, Sherwood Noel, '60, d. 01/12
Powell, Eleanor, '43, d. 07/12
Stevens, Evelyn Picton, '52, d. 05/12

TULANE UNIVERSITY
Bradburn, Ann Kostmayer, '36, d. 07/11
Durant, Beth Henican, '49, d. 12/09
Heebe, Louise Corrigan, '61, d. 04/12
Rouse, Joan Essig, '49, d. 05/12

TULSA, UNIVERSITY OF
Price, Jane Abney, '55, d. 08/12
Pringle, Julie Flint, '50, d. 06/12

UTAH, UNIVERSITY OF
Austin, Kathryn Watters, '39, d. 06/12
Canady, Patricia Ensign, '48, d. 01/12
Eland, Claudia Lang, '53, d. 05/12
Park, Joanne Morley, '46, d. 09/05

WASHINGTON & LEE UNIVERSITY
Chenet, Jill Bailey, '00, d. 07/12

WASHINGTON STATE UNIVERSITY
Amundson, Genevieve Hamilton, '36, d. 08/12
Connon, Marilyn Smart, '48, d. 07/12
Peterson, Alice Norum, '29, d. 07/12
Stier, Jean Inlow, '41, d. 08/10

WASHINGTON UNIVERSITY
Zupscics, Margaret Jensen, '47, d. 05/97

WASHINGTON, UNIVERSITY OF
Bloom, Sally Spring, '48, d. 07/12
Cahill, Mary Creech, '46, d. 01/08
Fowler, Barbara Lagasa, '43, d. 05/12
Garrison, Marion Oliver, '37, d. 06/12
Pattison, Harriett McCord, '44, d. 04/12

WEST VIRGINIA UNIVERSITY
Reiley, Teresa Dowell, '42, d. 06/12

WHITMAN COLLEGE
Fey, Florence Tobey, '42, d. 01/12
Hoof, Robin, '83, d. 10/09
Lord, Miriam Hart, '43, d. 07/12
Stein, Elizabeth Cozier, '35, d. 01/12

WILLIAM & MARY, COLLEGE OF
Daniel, Virginia Stephens, '43, d. 05/12
Doll, Mary Willis, '46, d. 06/12
Ralph, Martha Page, '52, d. 08/12

WISCONSIN, UNIVERSITY OF
Allman, Dorellen Lyons, '45, d. 11/11
Gilboy, Maxine Binet, '42, d. 07/12
Leedom, Marjorie Snow, '40, d. 07/12
Rosemurgy, Jane Pellegrin, '38, d. 05/12

WYOMING, UNIVERSITY OF
Coe, Twila Smith, '40, d. 05/12
Faulkner, Lois Sorensen, '47, d. 08/87
Payne, Janet Smith, '30, d. 04/81
Sullivan, Margaret Hamilton, '31, d. 02/88
Zwick, Judy Wilson, '62, d. 07/12

* Indicates inactive chapters.

The Key apologizes to JANET MCCANNA, New Mexico, and her family. Janet was listed in the summer 2012 "In Memoriam" by mistake.





Punch Hutton: On Making the Perfect Pick

—By NAOMI RATNER, *Syracuse*

For those of us who cherish closet space and always love a compliment, we know just how important it is to have the perfect dress. It's the dress hanging at the front of the closet, the one that works for the important interview or the much-anticipated date. It's the dress that makes you stand a little taller and feel a little more special—it's just the perfect one.

It's the dress hanging at the front of the closet



The one that works for the important interview



Or the much-anticipated date



PUNCH HUTTON, *Northwestern*, knows just how important *that dress* can be. As deputy editor at *Vanity Fair*, Punch is always on the lookout for transitional attire, needing to go from day to night with just a quick change of shoes or accessories. After one too many wardrobe changes, she combined her creativity and passion to launch Punch Shifts, fulfilling her own need for the perfect dress with a collection of wear-anywhere shifts.

“I thought—what if I could do one for every day of the week? I believed in the idea,” says Punch, whose collection is made up of eight dresses, one for each day, along with an extra for fancier occasions. “I had such a clear vision of what I wanted . . . I think if you believe in something, why not?”

Punch’s vision was put into action when she enlisted Voravit “Vee” Lapnarongchai, a former designer for Derek Lam, to design the shifts. To begin the design process, Punch starts in her comfort zone, putting together a mood board of design inspiration and then sharing it with Vee, who then brings her visions to life. Punch then edits the designs and manages the production, bringing her classic style to other stylish closets.

“It’s one thing knowing you’ve created something you would wear, but something else when you create something *other* people wear,” says Punch, whose dresses are made in New York City.

It's the dress that makes you stand a little taller



And feel a little more special



It's just the perfect one



When the first made-to-order collection launched in April 2011, Punch's dream had truly become a reality. "I have never felt more proud," says Punch of the first collection. "But more than that, it was so good to hear [women] say 'I feel so good in this dress!'"

As news of Punch Shifts spread by word of mouth and fashion articles, the second collection was produced, introducing more women to the wear-anywhere, classic looks. From the first mood board created to the last shipment that she herself packed, Punch learned the business and began adding a new addition to women's wardrobes—the perfect dress.

Amid running her own business, Punch develops and edits the Fanfair and Fairgrounds section of *Vanity Fair*, where she has worked for 13 years. From planning content and signing writers to working with photography and layout, Punch says, "There's nothing else I'd rather do."

And as any hardworking woman knows, it is not always easy to land a dream job. Punch started her career working in the mailroom at United Talent Agency in Los Angeles and continued working in the celebrity and entertainment industry at B|W|R Public Relations. Knowing she had not found what she wanted, she moved to New York City and began looking for a role in journalism.

“You want to belong to something you feel proud of ...

I feel very proud of [being a Kappa].”

“I knew I wanted to work at a magazine,” says Punch. “It was an amalgamation of everything I had ever done.”

Starting out as assistant to Graydon Carter, Editor in Chief of *Vanity Fair*, Punch was inspired by the creativity and passion that surrounded her. Her career began to grow along with the magazine, as she increased the Fanfair section from four pages to its current 12 to 14 pages.

Outside of her Times Square office, the glitz and glam that come with her role have almost made her more humble.

“The excitement and access I have in my job is not lost on me,” says Punch, whose travels to the Cannes Film Festival and the Oscars are just another part of the job. “You’re very aware that you’re around people who have shaped pop culture,” she says of her work environment.

Punch uses her eye for all things fabulous to share her finds with the world, using the power of the magazine.

“My favorite part [of work at *Vanity Fair*] is learning about something new and putting it in the magazine—it’s incredibly rewarding,” says Punch, who enjoys helping companies grow.

So what advice does such a Superwoman have for those looking to land their dream jobs? Here goes: say “yes” to every informational meeting (as you never know what could come out of it!), gain internship experience, practice good manners, never underestimate the power of a handwritten note, and remember that loyalty is one of the most powerful things one can possess.

And that Kappa loyalty has its presence within the walls of the magazine. **BETH KSENIAK**, the Executive Director of Public Relations at *Vanity Fair* and a charter member of **EPSILON SIGMA, Virginia**, is the inspiration behind the “Beth” dress, the most popular dress in the first collection. Recalling when Punch first came in for her *Vanity Fair* interview, Beth spotted Kappa on her résumé and the two women connected through their shared history (and of course, their love for the world of magazine journalism). Beth knew she had to have the Punch Shifts dress that was named for her and has added a few more to her wardrobe.

“There’s something fun and flirty about wearing [Punch Shifts],” says Beth. “They’re just so comfortable and so easy to wear. You’re good to go every day of the week.”

While learning the ins and outs of fashion design, Punch also realized how challenging it is to start a business, especially while maintaining focus on a full-time career and making time for her family.

“I couldn’t be more impressed,” says Beth of Punch’s Superwoman skills. “She has a really time-consuming job at *Vanity Fair*, and when she first told me [about Punch Shifts] I thought ‘wow. You’ve done your job here *and* you’re doing this? One, to have the idea and, two, to take the idea and make it into something. And, three, make it into something—that’s fabulous. I have tremendous admiration for her.”


From working on the third collection to answering every email, Punch’s multi-tasking and strong management skills have ties to her undergraduate Kappa experience.

“Kappa put me into a leadership role early on,” says Punch, who served as Events Chairman and President while studying communications at Northwestern. “I learned how to get people involved ... how to be a leader while having fun.”

Punch had a special feeling about Kappa before even heading off to the university. “I just knew I wanted to be a Kappa,” says Punch, who had always heard stories of the Fraternity from a friend’s Kappa mother while growing up. “You want to belong to something you feel proud of ... I feel very proud of [being a Kappa].”

With her style and ability to make women feel fabulous, Punch has proved that it just takes a little bit of passion to reach for the stars.

“If you have a dream and a vision, you can actually make it happen,” says Beth of Punch’s dedication. “She somehow manages to balance it and make it all perfect,” just like her perfect dress.

For more information on Punch Shifts, or to add the perfect dress to your wardrobe, visit www.thepunchcollection.com. 



Inspiring. Preparing. Impacting.

Can You Do It All?

—By LUCY FIRST, *DePauw*

FFrom running student government to competing on the field to debating in the classroom, today's collegiate women are taking on more commitments and responsibilities than ever.

But the question remains: Can you do it all?

Nicole Gibbs thinks so. A junior at Stanford University, Nicole is a member of **Beta Eta^Δ Chapter**, a championship tennis player, and an economics major.


"Every student athlete at Stanford knows the difficulty of attempting to be a good student, an active member of the school community, and a committed athlete all at once," Nicole says. Her mission to balance athletics, academics, and a social life began when she was introduced to tennis at age 3 by her father.

Connecting.





*“I wanted to create a
community for myself that
extended beyond athletes
and classmates...”*



“He would set up two trash cans with a wooden board across the top of it in our driveway and have me hit balls over it,” Nicole remembers. At age 6 she played her first set, her opponent, a 5-year-old.

“I was confident that my extra year of experience would be enough to earn me the win,” Nicole says. However, the set did not go as expected. “I lost 6–0 in about 15 minutes. “I was totally embarrassed, and worked so much harder after that to make sure it wouldn’t happen twice!”

With the additional motivation, her hard work began to pay off. In middle school, she began to dream of playing Division I tennis. “I asked my dad what schools had the best combination of academics and athletics in the country, and he listed Stanford first. After that, I had my mind set!”

NATALIE DILLON, a senior tennis player and member of Beta Eta^Δ, hosted Nicole on her tennis recruiting visit. “She was very social, very gregarious,” Natalie says. “This was rare for recruits. I was really impressed with how confident and comfortable she was.”

Since enrolling at Stanford, Nicole has made a commitment to academics, athletics, and Greek life. “I try to grant equal importance to all three, but sometimes it feels impossible!”

While it may seem impossible at times, she appears to be handling her commitments and responsibilities just fine. She won the 2012 Honda Sports Award for tennis, a distinction awarded to the best junior tennis player in the U.S. The award topped off a big year for Nicole, who also won the 2012 NCAA Division I Singles and Doubles tennis championship.

“I felt incredible after doubles in particular. It was tough to go up against a teammate in the singles final, but after the doubles win it really sank in that I was an NCAA champ in two events, and that felt pretty amazing!”

Known to her Kappa sisters as “Gibbsy,” Nicole’s accomplishments have not gone unnoticed by her chapter. “We all see and admire her hard work and enthusiasm,” senior **ANGELICA ACOSTA**, Nicole’s Kappa big sister, says. “She simply loves what she does and that’s what motivates her to do her best. It’s been exciting and inspiring to watch her and see how far she’s come so quickly ... two NCAA titles in the same season? Unreal, Gibbsy!”

ANNA KIM finds Nicole’s accomplishments inspiring. “Everyone in our chapter—let alone

the entire university—admires Nicole for how successful she has been,” Anna says.

Another dream came true this year when Nicole played Serena Williams, winner of 14 Grand Slam Titles. “As an American tennis player, I’ve looked up to the Williams sisters my whole life, so it was an indescribable feeling getting to share the court with one of them,” Nicole says. “There were so many takeaways from the experience, but I think the most important thing was just realizing that I could play at that level. I lost 6-2, 6-1, but I left the court feeling like next time we played, the match could be a lot closer!”

Nicole’s Kappa sisters have been along for the ride as well. “When I played Serena, my big sister sent out about 12 emails excitedly reporting when I was going to play and encouraging the girls who were nearby over the summer to come watch.”

This kind of sisterly support is why Nicole joined Kappa. “I wanted to create a community for myself that extended beyond athletes and classmates. I discovered during Recruitment that Kappa is one of the most diverse groups on our campus. All the women in the chapter are so exceptional and in such different ways. It was great to become part of such a tight-knit family,” she says.

In turn, Nicole has contributed a great deal to the family atmosphere within the chapter. “She is such a compassionate and loyal friend. She’d rather talk about your life and know how you are doing. Even when she’s traveling across the country, she finds the time for her friends. She’s just as supportive of her Kappa sisters as we are of her,” says her big sister.

Nicole’s success is credited for bringing the chapter together. “The success she’s had within the tennis world has been a great source of pride for the chapter. With that has come greater unity and more communication in the chapter,” Natalie says.

Despite all her successes, members recognize that Nicole is just like every other member.

A two-time national champion, Nicole is just like the rest of the chapter in terms of staying up past two in the morning to finish essays and going to the movies with friends on a Friday night.

Among academics, athletics and Kappa, Nicole has a full schedule. With so much on her plate, she is thankful for her sisters.



For Nicole, balance is about one thing—prioritizing.



The handshake between Nicole Gibbs and Hilary Barte has extra meaning—both pledged Kappa and played tennis at Stanford.

"I'm lucky to call so many of the girls in Kappa my closest friends," Nicole says. "These are the girls that most often remind me to enjoy my college experience and have some fun!"

Natalie Dillon believes Nicole's commitment to creating friendships within Kappa has benefited her on the tennis court. "I think it's a lot easier to take on that journey when you have a fan base back home. So even though it might take a greater effort to build those relationships, I think it has actually benefited her because she's built this great support network," says Natalie.

In the end, Nicole says juggling Kappa, academics, and athletics comes down to one thing. "Balancing for me is all about prioritization," she says. "When finals are around the corner, academics take priority, and tennis and Greek life take a backseat. When I don't have tournaments or midterms, I try to be a more active member of Kappa. During NCAAs, it's all about tennis. This formula doesn't allow me to be the best student, athlete, or Greek woman at all times, but it ensures that I'm committing to all three as much as I can."

But Nicole cautions others about working too hard and striving for perfection. "You can't be perfect at every element of college all the time," she says. "Give yourself a break sometimes. If you're feeling particularly overwhelmed, take some time for yourself and try not to worry about your responsibilities. When you recover, you'll be better rested and equipped to start balancing things again!"


Nicole plans to continue her balancing act. Following graduation, she will pursue a professional tennis career and then attend graduate school, perhaps business school, before going to work with a nonprofit organization.

As she enters another year of college, Nicole feels fortunate to have her experiences at Stanford and in Kappa. "If you ask me, I'm the luckiest girl I know, and so fortunate to be balancing all of the amazing privileges I have!"

Maybe you really can do it all. 🗝️



*Maybe You Really
Can Do It All.*



Julie and husband, John, split their time between an 88-year-old home in Arlington, Va., and a 100-year-old farmhouse in Boston, Va.

Meet Julie Martin Mangis, Foundation Board of Trustees

—By MITCH HIETT PFLUGH, *Colorado*

Museums Chairman and Foundation Board of Trustees member **JULIE MARTIN MANGIS**, *George Washington*, is committed to making The Heritage Museum and The Stewart House Museum more accessible to the public. Recently, Julie led the successful campaign to raise funds for a new roof for The Stewart House Museum, the childhood home of Founder Minnie Stewart.

Julie has served Kappa for many years in many different areas. She was twice an alumnae association President and advised **GAMMA CHI CHAPTER**, *George Washington*, for more than 23 years. Julie has been the Lambda Province Director of Alumnae, a Regional Director of Alumnae, the Director of Alumnae, the Fraternity Ritual Chairman, and since 2004, Museums Chairman on the Foundation Board of Trustees. At the 2010 General Convention, Julie was recognized for her Kappa service with the Loyalty Award, the highest recognition a Kappa volunteer can receive. She was described in the Fall 2010 issue as, “Embodying a blend of graciousness and tenacity, Julie lives by the belief that women can achieve anything ... (She can) empower and inspire young women to give their best.”


In addition to her exceptional volunteer commitments, Julie also has had a varied professional career. In the 1960s, as a banquet manager at the Shoreham Hotel in Washington, D.C., she was responsible for glamorous events, weddings and balls. In the 1970s, while raising her three children, she turned to community planning issues, including writing

an analysis of alternative development solutions and developing a neighborhood-conservation plan.

When her husband’s career with the Department of State took them to overseas posts, Julie learned about and enjoyed each country. During their first stop in Rio de Janeiro, Brazil, their daughter was born. Then it was on to Paris, France, where Julie studied French cooking at the Ecole Hoteliere Jean Drouant and the Cordon Bleu. While in Caracas, Venezuela, she was Chairman of the Caracas Girl Scouts and the president of the U.S. Embassy Women’s Association—and while there, was awarded a Department of State Tribute of Appreciation for her service to Foreign Service families abroad.

Back in the United States, Julie began a new career in alumni administration at The George Washington University and, subsequently, while working as a fundraising consultant, she raised \$2.5 million for the renovation and expansion of the Arlington (Virginia) Arts Center. Julie is also a freelance writer and has contributed to *GW Magazine*, *The Georgetown Business School* magazine, *Motor Home* and other publications.

Despite having retired three years ago after six years as executive director of a nonprofit organization that promotes the two Metro station areas in Arlington, she has continued her lifelong involvement in civic and service organizations while being “Nana” to six grandchildren.

A mover, an inspiration, and an example to other Kappas, Julie encourages the advancement of women leaders. Thank you, Julie, for preserving in so many ways the beauty that is Kappa. 

Interested in Being a Museum Intern?

The Catherine Schroeder Graf Heritage Museum Internship is generously funded by the Kappa Kappa Gamma Foundation. The internship is a 12-week program offered every summer in Columbus, Ohio. **Apply by Feb. 1, 2013.** Visit www.kappa.org/foundation or call the Foundation office at 866-KKG-1870 for more information.



Caroline Washnock, 2012 Heritage Museum Intern

Kappa Kappa Gamma Foundation Welcomes New 2012–2014 Board of Trustees Members

KAY REID TENNISON, *Arizona State*
President

PAT MCINNIS COOPER, *Mississippi*
Vice President

NANCY EYERMANN FOLAND, *Tulsa*
Treasurer

KELLY COX BILEK, *TCU*
Development Chairman

KAY SCHOLBERG WEEKS, *Bucknell*
Financial Assistance Chairman

JULIE MARTIN MANGIS, *George Washington*
Museums Chairman

ELIZABETH BAILEY, *Mississippi*
Trustee

BETH UPHOFF BLACK, *Illinois Wesleyan*
Trustee

MARY JANE JACKSON CRIST, *Arizona*
Trustee

JULIE MARINE LESHAY, *Colorado College*
Trustee

LORI GILMORE MILTENBERGER, *Butler*
Trustee

MITCH HIETT PFLUGH, *Colorado*
Trustee

JEAN L. SCHMIDT, *Miami (Ohio)*
Trustee

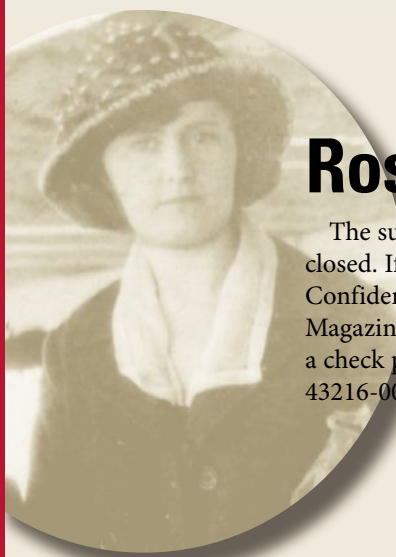
Contact information for Board of Trustees members can be found on the Kappa website at www.kappa.org/members. You also must log in to use the search, which is available only to members. To reach the Foundation staff, call 866-KKG-1870 or email foundation@kkg.org.

Heritage Museum Internship Opportunity

CAROLINE WASHNOCK, *Centre*, served as the 2012 Catherine Schroeder Graf Heritage Museum Intern. In an exhibit Caroline created for the General Convention in Jacksonville, Fla., she used clothing, photographs, statistics and scrapbooks from Kappa's two museums and archives to create a display of collegiate life in 1912.

In addition to helping with workshops and staffing the museums exhibits, Caroline (along with **EMILY KILE**, *Butler*, the Headquarters Intern) served as a model for Ellie Carlson during the Foundation Breakfast. While not officially in her job description, Caroline accepted the challenge and was dressed in an 1870s prairie costume as Ellie shared the often humorous evolution of women's foundation garments. Meanwhile, Emily wore a 1950s dress that echoed fashions that were popular when Fraternity Headquarters first opened for business on East Town Street in 1952.

During Caroline's internship, she practiced preservation techniques such as backing and wrapping and encapsulation. She learned to polish silver and how to clean and maintain delicate antiques. She scanned photographs for Kappapedia (wiki.kappa.org), gave tours to museum visitors and conducted research for the Museums Committee's next exhibit: *Enfranchisement to Employment*, to open at the 2014 Convention. Caroline describes her summer as forever changing her view of Kappa on an international scale and helping her develop a passion for preservation.



Rose McGill Magazine Agency

The summer issue of *The Key* announced that the Rose McGill Magazine Agency closed. If you wish to place magazine orders that will continue to benefit the Rose McGill Confidential Aid program, visit www.kappa.org/shop.aspx. National Community Services Magazines will process all orders. Or, to make a direct gift to help Kappas in need, send a check payable to the Kappa Kappa Gamma Foundation, P.O. Box 38, Columbus, OH 43216-0038, or make a gift online at www.kappa.org/foundation.

Thank You, Marj

The Foundation thanks **MARJORIE MATSON CONVERSE**, *Purdue*, for her years of service, loyalty and for her kind touch when corresponding with Rose McGill Confidential Aid recipients. While Rose McGill recipients receive financial aid, it is the “sisterhood that soothes the soul,” says Marj. During her 15 years of service overseeing Kappa’s confidential aid program, Marj personally wrote to each recipient on a monthly basis. Please continue to support the Rose McGill Fund with your generous donations so that Marj’s dream of endowing the fund will be realized.



Chapter and Alumnae Association Giving

These chapters and alumnae associations supported the Kappa Foundation with gifts received between June 5 and Aug. 2, 2012. Gifts received after Aug. 2 will be recognized in the next issue.

Chapters Gave \$35,813*

Lambda, *Akron*
Mu, *Butler*
Kappa, *Hillsdale*
Omega, *Kansas*
Beta Mu, *Colorado*
Beta Zeta, *Iowa*
Beta Omega, *Oregon*

Gamma Alpha, *Kansas State*
Gamma Theta, *Drake*
Gamma Nu, *Arkansas*
Gamma Chi, *George Washington*
Delta Beta, *Duke*
Delta Lambda, *Miami (Ohio)*
Delta Sigma, *Oklahoma State*
Delta Omega, *Fresno State*

Epsilon Eta, *Auburn*
Zeta Alpha, *Babson*
Zeta Mu, *Virginia Tech*
Zeta Omicron, *Richmond*
Zeta Sigma, *North Texas*
Zeta Upsilon, *Georgia Southern*
Eta Eta, *Central Florida*



Join the Omega Society

ANGELA BROWN,
Ohio State

Like Angela, you can join the Omega Society by creating a bequest provision in a will or trust, a charitable gift annuity, a charitable remainder trust, a charitable lead trust or by naming the Foundation as the owner and beneficiary of a life insurance policy or as the beneficiary of a qualified retirement plan such as an IRA or 401(k).

For more, contact **MAGGIE SIMS COONS**, *Hillsdale*, Director of Major Gifts/Planned Giving, Kappa Kappa Gamma Foundation, P.O. Box 38, Columbus, OH 43216-0038; 866-KKG-1870, ext. 2117; email mcoons@kkg.org or visit www.kappa.org and navigate to planned giving. (EIN #31-6049792)

A Graduate Student Includes Kappa in Her Estate

Setting a great example for others, **ANGELA BROWN**, *Ohio State*, recently informed the Kappa Kappa Gamma Foundation that she is including the Foundation in her estate plans, making her one of the youngest members of the Omega Society.

When asked why, as a recent graduate and a current law school student, she would want to become a member of the Omega Society, Angela said, “Kappa Kappa Gamma gave so much to me and I would like to give back and share that Kappa is for a lifetime. Recently my brother, my parents and I created our estate plans. As a third-year law student studying decedents estates, I know all too well that a will is really an instruction manual for what to do with your assets when you are gone. In class I learned that over half of all Americans

die without a will. And more and more people are living to an older age and are experiencing dementia. It is important to have a will so you know your assets are going where you want them to go.”

In her chapter, Angela served as Panhellenic Delegate and Panhellenic Director of Philanthropy on campus. While in school, she knew Kappa sisters who would not have been able to stay in school if it were not for scholarships or confidential aid from the Kappa Kappa Gamma Foundation. Angela says, “When I joined Kappa I was asked to pledge my loyalty and this is one way that I can pledge my loyalty to Kappa Kappa Gamma.” Formerly a finance assistant at Fraternity Headquarters, she is the Finance Adviser for **BETA NU CHAPTER**, *Ohio State*.

Alumnae Associations Gave \$33,957*

Atlanta
Birmingham
Boise Valley
Boston Intercollegiate
Cape Cod
Charleston, S.C.
Charleston, W.V.
Charlotte
Clay-Platte County
Clearwater Bay
Contra Costa County

Delaware
Desert
Detroit N.W.
Suburban
Detroit North
Woodward
Fort Worth
Greater Hartford
Greater Katy Area
Hattiesburg-South
Mississippi
Hawaii
Highland Lakes
Hilton Head
Huntsville

Indianapolis
Lake Charles
Lake Washington
Memphis
Miami
Milwaukee
Mobile
Montgomery
Morgantown
New Orleans
North Gold Country
North Sound
Northern Virginia
Northwest Suburban
Oklahoma City

Pasadena
Quad-Cities
Richardson-Plano
Sacramento Valley
Salt Lake City
San Diego
Sarasota-Manatee
Counties
Scottsdale
Seattle
Snake River
St. Charles
Stuart Area
The Golden Key
Tucson

Tulsa
Waco
Washington D.C.-
Sub. Maryland
West Tennessee
Whittier
Wichita

*Totals are combined.



Wearin' the green, **DENVER ALUMNAE ASSOCIATION** "Night Owls" enjoy the St. Patrick's Day parade on a beautiful day. From left are **KRISTEN OSTER**, *Denison*, **SHANNA WANKUM**, *Creighton*, **EMILY GIBSON**, *Tulsa*, **LINDY ROTHSCHILD**, *SMU*, and **SARAH WOOD**, *Central Florida*.



ZETA CHI, *Marist*, alumnae **LAURA DEMPSEY**, **RILEY ECKERT**, **LAUREN GOODWIN** and **KAIT SMITH** enjoy Spring Fireside with **ZETA CHI** chapter adviser **RENIE KINZER MILLIKEN**, *DePauw*.



The **CLEARWATER BAY ALUMNAE ASSOCIATION** "Lunch Bunch" gathers at Bon Appetit restaurant in Dunedin, Fla., each donating a book to distribute to Goodwill Suncoast, which has a reading program for underserved children.



During a reunion trip to Washington, D.C., 2011 graduates from **GAMMA OMEGA**, *Denison*, **KATHRYN DOUGLASS**, **AUDREY WOOD** and **BECKY GRAEBNER** visit the Lincoln Memorial.



The **NORTHERN VIRGINIA ALUMNAE ASSOCIATION** partners with the Child and Family Network Centers for an annual Reading Is Key event. Alumnae staged different rooms of activities for the children: a story room with Miss Virginia, a game room and a room to do crafts.



Sisters from the 2000 new member class of **GAMMA XI, UCLA**, gather in Sonoma, Calif., to celebrate their 30th birthdays.



Kappa sisters who are also sisters-in-law, **ALE SABIO KENNEDY, Clemson**, and **LESHA HEDGECOCK SABIO, North Carolina**, finish a brutally hot Boston Marathon in April.



Seven friends from **GAMMA PHI, SMU**, chose New Smyrna Beach, Fla., this year for their annual girls' trip, doing some kayaking and stand-up paddle boarding.

accent on alumnae

PAT McDOWELL CRIST, *New Mexico*, and **NANCY TAYLOR ALLEN**, *William & Mary*, who became friends while serving as directors at a community-based nonprofit organization near Washington, D.C., enjoy a day in Kennebunkport, Maine.



MARILYN CASEY BRACKEN, **JENNIFER CERULLY**, **CHRISTINE NOLIN** and **SUZANNE ROTHFELD STEVEN**, all *Carnegie Mellon*, are current members on the Carnegie Mellon Alumni Association Board (AAB.) The AAB is a select group of 25 active alumni representing various colleges within the university. Pictured during Carnegie Mellon's Spring Carnival weekend, these Kappas represent the highest percentage Greek affiliation within this small group of alumni.



DORIS BUFFETT, *George Washington*, front right, was treated to lunch by four of her **GAMMA CHI** sisters to celebrate her being named a 2012 Kappa Kappa Gamma Alumnae Achievement Award Recipient. With her in front is **CAROL BRIGGS WAITE**. In back, from left, are **EDITH PETERSILIA MAYO**, **BARBARA PEARSALL MUIR** and **JULIE MARTIN MANGIS**. Doris was also honored by The Virginia Press Association in April as Virginian of the Year.



SARAH COOPER SOLOMONS, *Oklahoma State*, and **TIFFANY HOLLY SILVER**, *Colorado State*, graduate from the University of Houston College of Optometry with Doctor of Optometry degrees. They met when they noticed one another wearing a Kappa T-shirt to class and became best friends.



Ten sisters from the 1987 new member class of **BETA THETA**, *Oklahoma*, gather for their annual girls' trip. They have been gathering for 15 years at a different sister's home for an entire weekend.



The Kapital Kappas, (**WASHINGTON, D.C./SUBURBAN MARYLAND ALUMNAE ASSOCIATION**), enjoy a private tour of the Newseum, the museum of news and journalism, located in downtown Washington, D.C.



Kappa alumnae tour the new hospital tower under construction at CHOC Children's Hospital in Orange County, Calif. Surveying the progress are **KIMBERLY CHAVALAS CRIPE**, *USC*, President and CEO of CHOC Children's Hospital, California state Senator **MIMI WALTERS**, *UCLA*, and **JENA JENSON**, *UC Berkeley*, CHOC Children's Hospital Government Relations Officer.

Key Achievements

🗝️ **DR. SUSAN GORDON WEINBERGER**, Carnegie Mellon, receives the William A. O'Neill Legacy Award at the Governor's Prevention Partnership Luncheon in New Haven, Conn., from Connecticut Governor Dannel P. Malloy. Susan, president of the Mentor Consulting Group in Norwalk, was honored for vision, leadership, commitment and tireless efforts on behalf of the youth of Connecticut.



🗝️ **KRISTIN ARMSTRONG SAVOLA**, Idaho, brought home gold in women's cycling once again from the Summer Olympics in London. Her win was a repeat from the Summer Games in 2008 in Beijing when she became only the second American female cyclist to do so after Connie Carpenter-Phinney won in Los Angeles in 1984. Kristin now is the only woman to win twice in back-to-back Olympics in her sport and did so after recovery and rehab for a broken collarbone following a bad fall during a previous race.

🗝️ At the College of Coastal Georgia, **MILDRED HUIE WILCOX**, Georgia, left, attends the opening of The Huie-Wilcox Gallery, honoring the legacy of her mother, Mildred Nix Huie, and herself. With her is John Huie, Ph.D. and Dr. Valerie A. Hepburn, president of the college. The gallery showcases "Coastal Visions," with pieces of art that reflect the beauty of the region. A ribbon-cutting ceremony featured a documentary, "The Legacy of the Two Mildreds," recounting the contributions of artist Mildred Nix Huie and her daughter, Mildred, both instrumental in furthering the arts. Mildred Huie (1907–2000) was an impressionist painter, sculptor, teacher and founder of the Left Bank Art Gallery and her work was featured on 60 Minutes. Her daughter, Mildred Wilcox, owns and operates the Left Bank Gallery on St. Simons Island, Ga., bringing more than 250 art exhibits to the community during the past 40 years.



HUIE-WILCOX GALLERY
 HONORING
 MILDRED NIX HUIE MILDRED HUIE WILCOX
 (1907-2000)
 THE TWO MILDREDS - MOTHER & DAUGHTER -
 ARTISTS, ADVOCATES, TEACHERS, COMMUNITY LEADERS &
 CITIZENS OF THE WORLD
 DEDICATED NOVEMBER 1, 2011

☞ In 2005, **LINDSAY BELL**, Bowling Green, moved to New York City with \$300 and no job, so she began doing what she knew best: babysitting. The oldest of five sisters, Lindsay learned early about responsibility and being a role model. Her background gave her the confidence to become co-founder of Lucky Lil' Darlings, an elite child-sitting and events company providing carefully screened sitters in eight cities from NYC to Los Angeles. Previously, Lindsay worked for the Radio City Rockettes, is now a member of the National Association of Child Care Professionals, and serves as a columnist for Mommybites.



☞ **TIANA FOWLER RONSTADT**, Florida State, received the University of Arizona's 2012 Order of Omega Alumni Hall of Fame award for her contributions to business and philanthropy in Tucson. The owner of Power Women Investing, a financial services firm, Tiana has been named to the Top 100 Female Advisors by WIFS, served as past president of the Junior League of Tucson, Casa de la Luz Hospice Foundation, Tucson's Kappa Kappa Gamma Alumnae Association and served on the boards of the Boys & Girls Club and YWCA of Tucson. Tiana specializes in the financial needs of women, from income and estate planning to pre- and post-retirement and investment services.



☞ **KELLY MAYO DYBALA**, Oklahoma State, is among the recipients of the 2012 "40 Under 40" M&A Advisor Recognition Awards for the Western Region. A partner in the Dallas office of the international law firm Weil, Gotshal & Manges, Kelly was named as one of the 45 best women attorneys under the age of 45 in the U.S. by The American Lawyer. In 2010, 2011 and 2012 she was named a leading lawyer for banking and finance in Texas by Chambers USA. Kelly led the financing for Advent's acquisition of Aerodom, operator of several airports in the Dominican Republic, in a deal for which her firm received the 2009 IFLR Private Equity Deal of the Year Award.



☞ Former New Mexico Lt. Gov. **DIANE DANIELS DENISH**, Arizona/New Mexico, has been named to the board of New Mexico Health Connections, a nonprofit health plan that was formed as part of the federal Affordable Care Act. It will cater to individuals and small businesses that need lower cost health insurance and will begin issuing policies in October 2013. This plan has received a \$6 million startup loan from the U.S. Centers for Medicare and Medicaid Services. As lieutenant governor from 2003 to 2011, Diane served as chairman of the Insure New Mexico! task force.



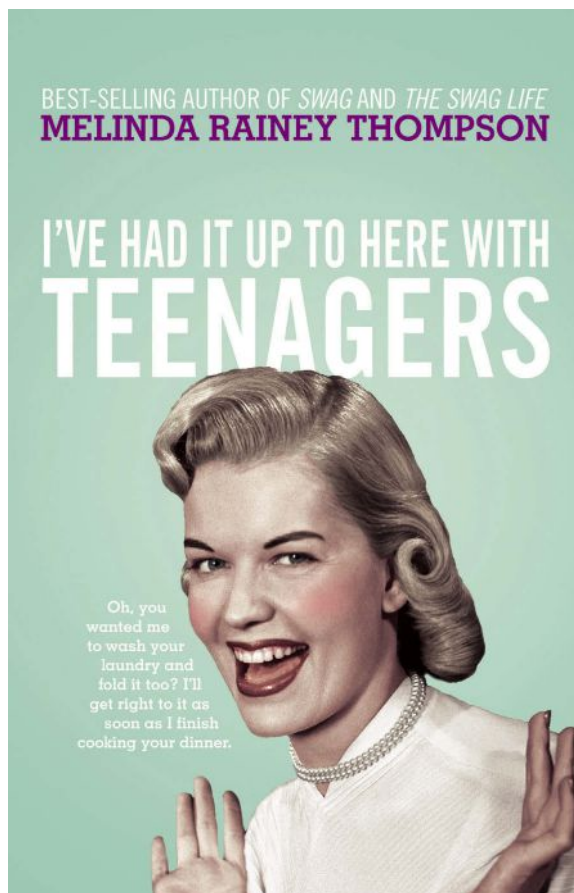
☞ **ALEXANDRA BOOS**, Michigan, founder and CEO of Luminous Breast Cancer Foundation, Inc., has been awarded a humanitarian service award by the University of Michigan's College of Literature, Science and the Arts for her work in helping women fighting breast cancer recover with dignity. A model with the Ford Agency in New York for more than two decades, she was inspired to establish Luminous in 2010 when her mother was diagnosed with stage 4 breast cancer. She learned that depression and self-image can affect recovery and that many of the products patients need, such as wigs, skincare and prosthetics are not covered by insurance. She used her modeling career to join the fashion and entertainment industries with the best of breast health care providers to help uninsured women. Visit www.luminousfoundation.org.

I've Had It Up to Here With Teenagers

By **MELINDA RAINEY THOMPSON**, *Tulane*

► While the title includes a word that can make even the strong shudder (teenager), mothers of small children or anyone thinking of becoming a mother or mother-figure should consider reading Melinda Rainey Thompson's hilarious tirade about the teens living in her household—before the little cherubs in your household morph into teens. Mothers of teens must read for commiseration! From Melinda's book you'll learn many tricks of the trade, from how not to embarrass your children (um, be invisible) to how to love your kids when you don't really like them. Don't be misled—this is no self-help book, but a funny, heart-rending account of one mother's attempt to raise good people who will contribute to society. Based upon her oldest son's rebuttal in the final chapter, Melinda gets it right when it matters most.

Melinda's book is available on Amazon.com, along with her other titles, *SWAG: Southern Women Aging Gracefully*, *The Swag Life*, and *I Love You—Now Hush*.



Self-proclaimed “Mean Mama” **MELINDA RAINEY THOMPSON** and her teens, who provide her with plenty of fodder for her latest book.

Poems From Under the Palm Frond Tree

By **CAROLE KNAUL WILLIAMS**, *UCLA*

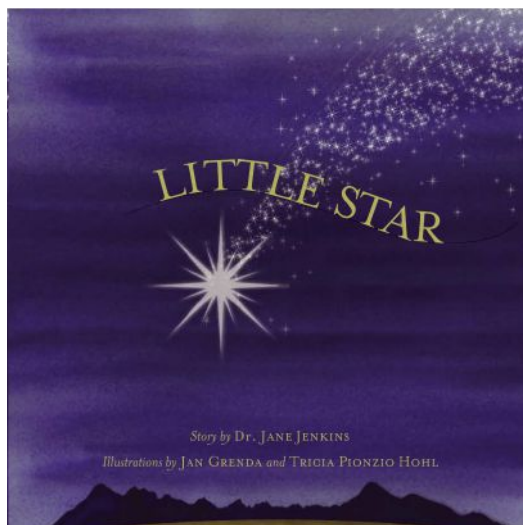
► Carole's e-book is an anthology of 21 poems describing entertaining and thought-provoking situations in playing bridge, jury duty, home remodeling, love, mystical unions, prayers, family lore, attempts at motherhood, and much more. Carole is a former radio station reporter and corporate publicist. Her e-book is available on Kindle tablet, iPad (Kindle Store), or Mac with Kindle app.

A member of the **GREATER LOS ANGELES ALUMNAE ASSOCIATION** since her 20s, Carole has held a number of positions in the group, including President. She is currently a member of her association's book group, which meets monthly for dinner at local restaurants and members' homes.

Next up for Carole is a fictional account of her mother's paternal family, as they tried to join a wagon train to California but mysterious circumstances forced them to stay in St. Louis, Mo. Then she plans to write the true story of a hero of the liberation of Guam from Japanese forces in 1944. Carole and her husband, Dick, lived on the island for two years while Dick, a lawyer, was in trial there. Carole is proud to have served her local Episcopal church as lay reader and altar guild director.



Carole's poems are light reading, suggested for enjoying over a cup of tea.



Little Star

By **DR. JANE JOHN JENKINS**,
Washington Univ. (St. Louis)

► A grandmother and storyteller, **JANE JOHN JENKINS**, has published *Little Star*, an endearing children's book that shows us how everyone can find his or her purpose by shining brightly, just like Little Star.

Penny for Your Thoughts

■ *Arts & Letters* is intended to be a menagerie of original art, letters, books, opinions and letters to the editor. Please submit original art work, opinions and letters to thekey@kkg.org. Works of art will be considered based on the quality of photos submitted. For *Key* submission guidelines, see Page 16 in this issue. All content is published at the discretion of the Editorial Board and not all submissions will be included.

VIRGINIA TECH. Meredith Melo, Whitley Gaffney, Lesley Marentette and Sarah Megas kick up their cowboy boots during Zeta Mu's "Sweet Home Kappa Gamma" Bid Day. Members enjoyed homemade pies baked by Kappa sisters, lemonade and, of course, sweet tea.



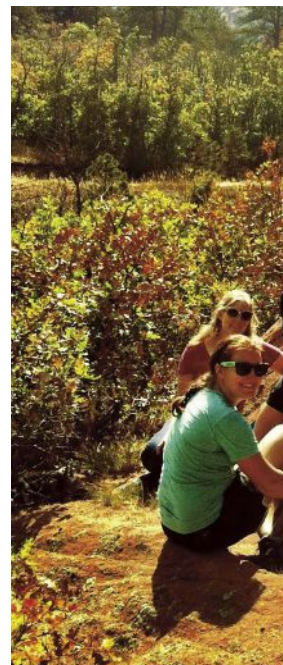
AKRON. Members from **LAMBDA CHAPTER** volunteer at the 2012 Kappa Kidney Camp for children and teens who are on dialysis or who have had a kidney transplant. Tabitha Truelsch and Lauren Harabath, both Akron, enjoy the day with a young camper.

Karissa Stokdal, **MARIST**, says she stayed with an amazing host family on her trip to Ghana to study African history, culture, economics and politics.



UC MERCED. After a successful welcome week event, themed "Kappa Kandyland," **ETA XI** members jump for joy.

COLORADO COLLEGE. While taking advantage of the great Colorado weather, **DELTA ZETA** women enjoy a hike.





FURMAN. ETA ALPHA members *Audrey Neumann* and *Sarah Odom* pause for a quick rest at the top of Baldwin St., the world's steepest street, in Dunedin, New Zealand, during their Maymester trip.

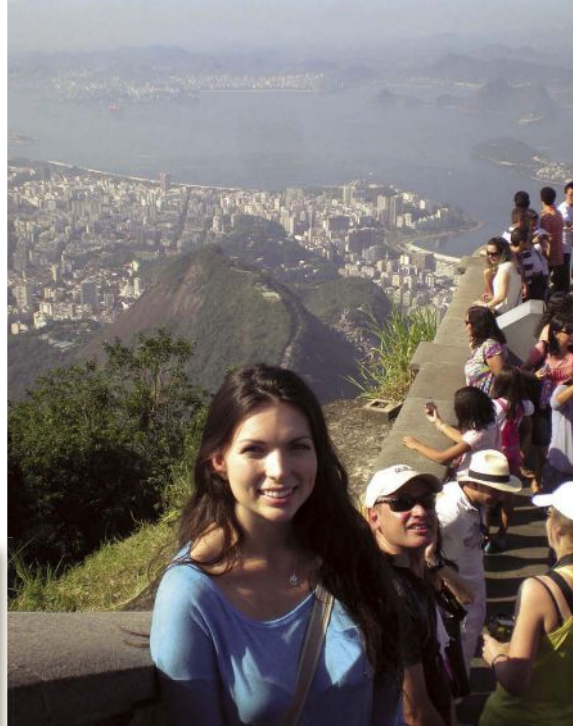


MISSISSIPPI. DELTA RHO Kappas are proud of the academic achievements of *Michaela Bechler*, *Fathom Hefner*, *Hannah Hudson*, and *Laura Marcucci* for being selected for membership in Phi Eta Sigma, a freshman honor society. Members must have a GPA of at least 3.5 and rank in the top 20 percent of their class.



FLORIDA. At the Eiffel Tower are **EPSILON PHI** seniors *Colleen Reilly* and *Jordan Palermo*, who interned at the Marymont International School of Paris, where they got their first experiences teaching in the classroom.

ARIZONA STATE. *Shannon Kelly* enjoyed an internship in Rio de Janeiro, Brazil, with Wahl Clippers, a maker of hair clips. Shannon says it was excellent experience because her major is anthropology and she plans to work for an international company, helping them assimilate into different cultures.



MONTANA. BETA PHI members *Sally McHugh, Alicia Heckel, Georgia Reid* and *Laura Gribble* dig a garden to help a fellow student whose goal is to dig 1,000 gardens this year.

ILLINOIS WESLEYAN. EPSILON members *Amanda Knezovich, Hillary Davis* and *Katie Bauer* visit the Taj Mahal during their summer study abroad trip.



ARKANSAS. Congratulations to **GAMMA NU!** On Bid Day, 156 women pledged Kappa at Arkansas, making it Kappa's largest chapter with 446 active members.





CARNEGIE MELLON. Senior members of **DELTA XI CHAPTER** celebrate graduation. After four years at Carnegie Mellon University, they know that Kappa sisterhood is forever.



CONNECTICUT. **DELTA MU** members celebrate while waiting for the new members.



DRAKE. Colorful denim showed **GAMMA THETA'S** enthusiasm during Recruitment.



UC RIVERSIDE. *Brittany and Brooke Altamirano, EPSILON PI,* show their Kappa love on a family road trip to Yosemite National Park. The sisters became Kappa sisters this year when younger sister Brooke was initiated at Brittany's chapter.



Going Her Own Way

Lili Ruff's Instagram Self-Portrait Wins Photo Contest

—By **SOMMERANN MCCULLOUGH**, Denison

LILI RUFF, *Iowa State*, is a huge fan of singer-songwriter Jason Mraz. She has waited more than 24 hours in 97 degree weather to get into a Mraz concert, and has been in the front row at four of his shows. For Lili, winning Mraz's Instagram photo contest, "I Won't Give Up," was a dream come true.

The photo contest was based on Mraz's single of the same name from his new album. Nearly 10,000 photos were submitted via the Instagram cell phone app, and Mraz handpicked 25 winners. Lili won the overall contest for her image, shown above.

Lili knew immediately that she had to enter as a devoted Mraz fan. She found herself thinking about the lessons she had learned in Kappa when deciding what to submit for her picture.

Reflecting on her time in Kappa, Lili realized how her identity had changed during her time at Iowa State. "I knew I wanted to be memorable, but I wanted to fit in at the same

time. I wanted to be everyone's friend, and I wanted to know as many people as possible," Lili said on joining Kappa her freshman year.

Lili made a lot of new friends her first year in Kappa, but realized that her "larger personality" wasn't genuinely her own.

"No matter how outgoing or outrageous I may have seemed on the outside, I was somehow going insane on the inside. After a year of trying to be something I thought someone else would like, I realized I wasn't really myself anymore," Lili says.

Her sophomore year, Lili turned to Greek competitions and some of her close sisters as outlets, as she found her stable identity.

Entering her junior year, Lili finally began to figure out who she was as an individual. "When I came back as a junior the next fall, I made a promise to myself to be more like myself, and to never try to be something I'm not," Lili says.

I made a promise to myself—to be more like myself.

Her continued personal growth and understanding shaped her final entry for the photo contest. Lili's picture was titled "Myself," with a simple, clear image and words.

"The creative process was rather easy, with a little input from my mom, I knew I wanted it to be a simple, stripped-down picture of exactly me, in a tank top, and the message plain and clear," Lili says.

Lili got the winning voicemail when she was at a Greek variety show, in the middle of performances.

She remembers the moment clearly: "Upon registering what the two chipper guys on the other end of the office speaker phone from Atlantic records were telling me, I rose from the floor in a daze, walking into the hallway, turned to my friend

and co-star and said: "I won." He looked at me in shock and said: "You won?" And then I quickly burst into tears and ran to tell my mom, who then burst into tears and called her mom, who then, you guessed it, burst into tears."

Along with winning the contest, Lili was flown to the gallery showing in New York with her mom and was able to meet Jason Mraz himself. "It was almost a fairytale—something I will never stop cherishing, talking to him for five minutes or the time I spent with my attached-at-the-hip mom," Lili says.

To this day, Lili's favorite lyric comes from Mraz's 2008 song "Details in the Fabric." The message aligns perfectly with Lili's journey to finding herself. "Hold your own, know your name, go your own way." 🗝️



Lili and her best friend Keeley Driscoll, *Iowa State*.

Girly Greek Sisters™



Chic Sorority style

www.girlygreesisters.com

DESIGNED ESPECIALLY FOR
KAPPA KAPPA GAMMA!

Wear with pride!
Girly Greek Sisters
donates a portion of
your purchase to the
Kappa Kappa Gamma
Foundation.

Take a
sneak
peek!



Made in the USA



Our Beautiful Irises on Blank Notecards

*Reproductions of delicate watercolor
art by retired Kappa artist,
Pat Brangle.*

*Each card is hand cut and assembled.
They are blank on the inside so you may
write your own special message.*

**An assortment of 10 cards with envelopes:
\$24. (includes shipping & taxes)**

*Until I am able to set up a website I must
accept mail orders only.*

Please send your check or money order to:

Pat Brangle

P.O.Box 8098

St. Louis, MO., 63156-8098



(Please include your phone number with your order) Thank you very much. ♥

kappag.ahitravel.com



Go Over the Rainbow with Kappa Travels!

2013 Destinations

Ireland, May 13-21, \$2,995

Spain: Barcelona and San Sebastian,
June 2-11, \$2,995

Adriatic Antiquities:
Venice to Athens, **June 11-24**, from \$4,395

Grand Danube Passage,
Sept. 15-30, from \$4,395

Tuscany Cortona, Oct. 9-17, \$2,795

Cruise South America,
Dec. 8-22, from \$3,795

Visit www.kappag.ahitravel.com and select "Journeys," "Destinations," or "View Trips" for detailed trip information or call 800-323-7373. Friends and families are welcome, and be sure to look at other trips AHI offers—you can travel to many other destinations than those listed above. Questions? Call DALE BRUBECK, Kappa Travels Coordinator, 614-888-0685 or email dbrubeck@columbus.rr.com.

LA PLATES™ KKG owned!

PERSONALIZE A GIFT FOR EVERYONE ON YOUR HOLIDAY LIST!
WWW.LAPLATES.COM
FOLLOW US ON FACEBOOK, TWITTER & PINTEREST FOR ALL THE LATEST SCOOP

Holiday Favorites & Matches

ORIENT
expressed

JOIN OUR PARTY!!
discover the fun and the rewards
when you join the **ORIENT EXPRESSED**
Home Show Team
apply on-line @ www.orientexpressed.com
orient expressed • 888.856.3948 • www.orientexpressed.com

Send all address changes
and member deaths to:

KKΓ Headquarters
P.O. Box 38 • Columbus, OH 43216-0038
866-554-1870 • Email: kkgq@kkg.org

the Key Source www.buykappa.com

800-441-3877

309 691 3877

Deep group discounts! Check out web specials!



Velocity shorts in ice blue or navy \$26 sz. XS -XL
Flannel drawstring pants \$28 (see web for styles, colors)



crest crew \$36 1/4 zip \$48 oxford or navy, more crest wear on line S2 S-XL



macrame bracelets fleur \$27.80 KKG \$29.80



lavalier \$15 plus chain \$18

LETTER SHIRTS



short sleeve \$23, long sleeve \$27, crewneck \$32 hoods, sweatpants on line Many variations and group pricing is always available!

We're exclusively Kappa!



beach towel \$23



Lily Pulitzer tumbler \$16



iPhone case \$28



keyring \$7.50

MOM & DAD SPECIALS!



pearl & sterling mom charm \$17.60



2 toned keyring \$9.30



ring \$34.00 whole sizes

new thin sole ribbon flip FLOPS \$19.95 sizes S-M-L



ever popular flip flops in solid or polka dot \$19.95 Sz 5-11



microfiber tote \$21



black laminated tote \$8.25



SAVE ON COLOR PACKS! Choose 3 pieces of matching sportswear & save \$\$\$ for the holidays! See buykappa.com



kappa thermal hot or cold \$9



Zig zag or key ornament \$19.95 Crest bulb \$13.95. New 2012 ornament on line for holidays



Your best source for holiday giving. Great prices, variety, & service!



plush blanket \$28 Add name \$6 first line, \$5 additional



letter jersey \$19

add name on back: \$7.60 more colors on line

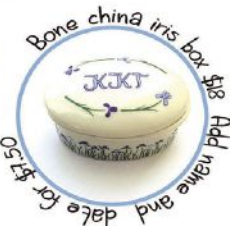


self standing block 6x2.5" with hanger on back \$13.50

kappa hat \$16



Hat with name: \$18



Bone china iris box \$18 Add name and date for \$3.50

THE FINE PRINT: Products & prices may change at any time. Email: keysources@ameritech.net. Call 309-691-3877. Address: 1723 W. Detweiller Dr. Peoria, IL 61615. MIN PHONE ORDER \$25 Shipping additional. For special pricing for chapters, reunions, any events, call or email for quotations.

