

## Corresponding Secretaries.

### ALPHA PROVINCE.

- Phi**, Boston University, Boston, Mass.—Elizabeth Hunter, 11 Putnam St., West Newton, Mass.
- Beta Epsilon**, Barnard College, New York City—Janetta Studdeford, Fiske Hall, Barnard College, New York City.
- Psi**, Cornell University, Ithaca, N. Y.—Louise Powellson, Sage College, Ithaca, N. Y.
- \* **Beta Beta**, St. Lawrence University, Canton, N. Y.—Eleanor Mulry, Canton, N. Y.
- Beta Tau**, Syracuse University, Syracuse, N. Y.—Eleanor W. Thayer, 718 Irving Avenue, Syracuse, N. Y.
- Beta Alpha**, University of Pennsylvania, Philadelphia, Pa.—Mary Scattergood, 471 Marshall St., Philadelphia, Pa.
- Beta Iota**, Swarthmore College, Swarthmore, Pa.—Elizabeth Dinsmore, Swarthmore, Pa.
- Gamma Rho**, Allegheny College, Meadville, Pa.—Marguerite McClintock, 413 Walnut St., Meadville, Pa.

### BETA PROVINCE.

- Lambda**, Buchtel College, Akron, Ohio—Inez Parshall, 116 Fay St., Akron, Ohio.
- Beta Gamma**, Wooster University, Wooster, Ohio—Anna Ewing, 3 College Ave., Wooster, Ohio.
- Beta Nu**, Ohio State University, Columbus, Ohio—Maybelle Raymond, 588 E. Rich St., Columbus, Ohio.
- Beta Delta**, University of Michigan, Ann Arbor, Mich.—Pearl B. Taylor, 515 Monroe St., Ann Arbor, Michigan.
- Xi**, Adrian College, Adrian, Mich.—Jessie M. Byers, Adrian, Mich.
- Kappa**, Hillsdale College, Hillsdale, Mich.—Frances Woodward, 215 Hillsdale St., Hillsdale, Mich.

### GAMMA PROVINCE.

- Delta**, Indiana State University, Bloomington, Ind.—Vesta Triplett, 430 E. Second St., Bloomington, Ind.
- Iota**, DePauw University, Greencastle, Ind.—Ethel C. Cress, Greencastle, Ind.
- Mu**, Butler College, Irvington, Ind.—Verna M. Richey, Irvington, Ind.
- Eta**, University of Wisconsin, Madison, Wis.—Carrie Hulah, Ladies' Hall, Madison, Wis.
- Beta Lambda**, University of Illinois, Champaign, Ill.—Ella V. Engstrom, 1106 W. Illinois St., Urbana, Ill.
- Upsilon**, Northwestern University, Evanston, Ill.—Dorothy G. Cushman, College Cottage, Evanston, Ill.
- Epsilon**, Illinois Wesleyan University, Bloomington, Ill.—Anita T. Lundy, 1303 Park St., Bloomington, Ill.

### DELTA PROVINCE.

- Chi**, University of Minnesota, Minneapolis, Minn.—May Merrill, Box 260, University of Minnesota, Minneapolis, Minn.
- Beta Zeta**, Iowa State University, Iowa City, Ia.—Alice McGee, 124 Church St., Iowa City, Ia.
- Theta**, Missouri State University, Columbia, Mo.—Edith M. Vaughn, Columbia, Mo.
- Sigma**, Nebraska State University, Lincoln, Neb.—Blanche Hargreaves, 1528 R St., Lincoln, Neb.
- Omega**, Kansas State University, Lawrence, Kan.—Mabel S. Henry, 1003 Tenn. St., Lawrence, Kan.
- Pi**, University of California, Berkeley, Cal.—Mary I. Stockton, Kappa Kappa Gamma Hall, Berkeley, Cal.
- Beta Eta**, Leland Stanford Jr. University, Cal.—Carrie A. Goodhue, Stanford University, Cal.

\* By order of the Court.

Entered at the Post office at Ithaca as second class matter.

# FRATERNITY DIRECTORY.

## GRAND COUNCIL.

GRAND PRESIDENT—Bertha P. Richmond, 85 Boston Ave., West Medford, Mass.  
GRAND SECRETARY—Carla Fern Sargent, . . . . 627 Clark St., Evanston, Ill.  
GRAND TREASURER—Mrs. William T. Coe, . . 1217 30 Ave., Minneapolis, Minn.  
GRAND REGISTRAR—Mignon Talbot, . . . . 640 Franklin Ave., Columbus, Ohio.  
EDITOR OF "KEY"—Mary Josephine Hull, . . 413 E. Buffalo, St., Ithaca, N. Y.

## DEPUTIES.

GRAND PRESIDENT'S DEPUTY—Helen M. Armstrong, Highland Ave.,  
Winchester, Mass.  
GRAND SECRETARY'S " —Harriet M. Moore, 32 Pine Grove Ave., Chicago, Ill.  
GRAND TREASURER'S " —May C. Whiting, . 425 S. 13th St., Lincoln, Neb.  
GRAND REGISTRAR'S " —Florence Corner, . 642 E. Rich St., Columbus O.  
EDITOR'S DEPUTY —Beulah G. Morgan, . Sage Cottage, Ithaca, N. Y.

## ALUMNAE ASSOCIATIONS.

BOSTON ALUMNAE ASSOCIATION—Helen M. Armstrong, . . . Winchester, Mass.  
NEW YORK ALUMNAE ASSOCIATION—Mrs. Guy Walker,  
115 West 94th St., New York, New York.  
COLUMBUS ALUMNAE ASSOCIATION—Cora Gale, . East Oak St., Columbus, Ohio.  
INDIANAPOLIS ALUMNAE ASSOCIATION—Inez Elliot,  
1566 East Market St., Indianapolis, Ind.  
BLOOMINGTON ALUMNAE ASSOCIATION—Mrs. Frank Parrit, . . Bloomington, Ill.  
CANTON ALUMNAE ASSOCIATION—Sybil E. Bailey, . . . . . Canton, N. Y.  
GREENCASTLE ALUMNAE ASSOCIATION—Mrs. Charles S. Preston, Greencastle, Ind.  
DENVER ALUMNAE ASSOCIATION—Alice G. Maitland, 874 Clarkson St., Denver, Col.  
MINNEAPOLIS ALUMNAE ASSOCIATION—Jessie G. Eaton,  
1302 Yale Pl., Minneapolis, Minn.


All literary articles should reach the Editor before the following dates: *December 1, March 1, June 1, and September 1.*

All business communications, money subscriptions and exchanges should be sent to

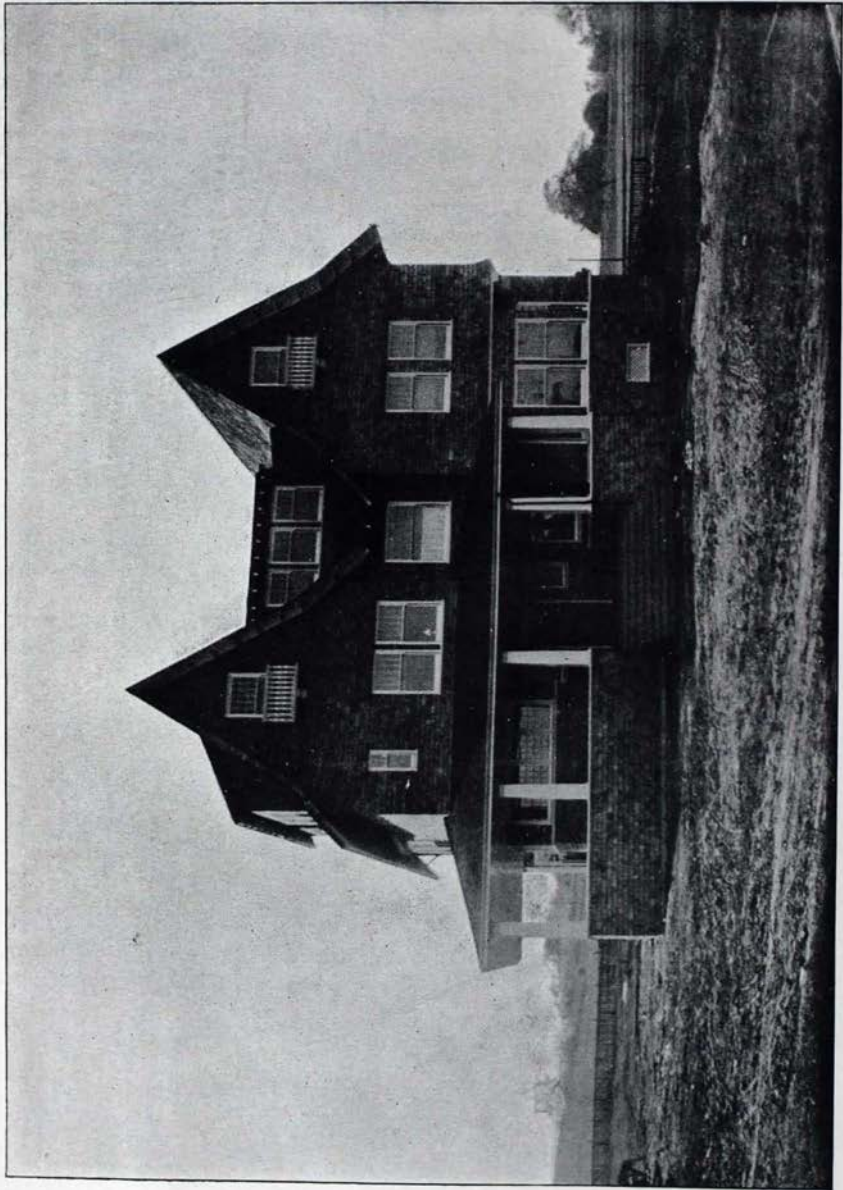
**MARY J. HULL,**

**413 E. Buffalo St., Ithaca, N. Y.**

TERMS—\$1.00 per year ; 25 cts. single copy ; sample copy free.

 The KEY will be sent to all subscribers until ordered discontinued and arrearages paid, as required by law.





BETA ETA'S NEW CHAPTER HOUSE.

# ~THE KEY.~

---

VOL. XVII.

JULY, 1900.

No. 3.

---

## *BETA ETA'S NEW CHAPTER HOUSE.*

The new Kappa House is one of the largest and prettiest fraternity houses on the Stanford Campus. From its setting of green foothills it looks across the level fields, over the tree tops of the Arboretum to the narrow line of bay and the hazy blue mountains beyond.

It is a cedar shingled house, trimmed in white and built after the old English style of architecture, with sloping moss green roofs, pointed gables and dormer windows. The panelled door of curly redwood with its old fashioned wicket, over which a wrought iron lattice bears the letters K. K. T. and the art glass windows with the fleur-de-lis embedded in cardinal, form an artistic entrance in the deep recess of the verandah.

Within, in the large reception hall facing the entrance, an old clinker brick fire-place blends its sombre hues with the redwood panelling and the ruby-tinted ceiling.

To the right, opening from the reception hall around one central pillar are the reception parlor and music room, in tints of apple green; while, directly behind, opening through a wide entrance at the right of the fire place, is the long dining room in shades of ecru. The ceilings and delicately contrasting tints of the four rooms give a charming effect to the whole.

At the left of the entrance, the broad stairway with its low banisters, carved newel posts and wide landings, in entire keeping with the general architectural effect, leads to the wide upper hall, sometime to be our library and general reading room, from which the several rooms open. The rooms on this second floor are large and sunny, ideal college rooms, while the third floor, the abode

of the freshman, and familiarly known as "the attic" is one of the most attractive parts of the house. It is one large room, furnished like the rest of the house but free from partitions and thus furnishes the most delightful place imaginable for initiations and informal spreads while from its many windows one gains the best view of the surrounding hills covered with oak trees and, in the spring, ablaze with the glorious California poppies.

### *THE FRATERNITY WOMAN.*

What the world needs to-day is "all around women". The age when women were either household drudges or society dolls is past. Nowadays it is considered proper that women should be liberally educated as well as men and so the college woman has come into existence.

But there are ways and ways of taking a college course. Some girls never hear or see anything beyond their lessons for the day. They know nothing, do nothing, but what is found in a text book. Others go to the opposite extreme and come to college simply for the fun they can get out of it. Then, there is the girl who happily carries out the policy of combining the two methods. This is generally the fraternity girl.

There are several reasons for this. In many colleges most of the social life among the students is in the fraternities. Outside of a few receptions and parties given by the college as a whole, all the social functions are given by the fraternities and to the fraternity people. At these functions the girl acquires the art of appearing at ease in society. When her own fraternity receives, she learns how to be the gracious, entertaining hostess.

On the other hand, fraternity pride and loyalty will make a girl otherwise not very studiously inclined, study hard and endeavor to bring glory to her beloved fraternity by her high standing. The freshman who is unaccustomed to the college professors' ways of marking, is informed of her progress and class standing by the careful, helpful upper classmen who have been detailed to obtain these facts from the various instructors. If a favorable report is given, the girl feels a glow of pride and resolves to raise, or at least, to maintain her standard. If the re-

port is not as favorable as could be wished, the freshman, ashamed and conscience stricken, determines that for the honor of the fraternity, as well as for her own sake, her standings the next semester will rank among the highest.

No insignificant contribution to the culture of a fraternity woman is the association with so many different people. The girls come from sections of the country differing greatly in customs and opinions as well as in latitude and longitude. When all these girls, representing such different homes, and having diverse views and outlooks upon the world, meet as sisters, each must be broadened by her fellowship with the others. She finds that there are other ways of living and looking upon life than her own, and she is led into wider spheres of thought and action.

Then, too, each girl has her own faults and peculiarities. Sometimes parents are so blinded by their love that they do not see and correct in the children the little things that mar their attractiveness and usefulness. But in a fraternity, each is judged at her true worth. A girl can not live long with a dozen or more others without finding out what her faults and oddities are. Then, if she is the thoughtful girl a Kappa should be, she will immediately set about correcting them and developing a noble, symmetrical character.

Amid the rush and hurry of college work and fun, there is a great tendency to neglect the heart life. Many acquaintances are formed but they are mere acquaintances, friends for the time being. But among the girls in a fraternity, brought together under the tender bonds of sisterhood, it would be unnatural if many sweet, close and lasting friendships were not formed. No one can truly and unselfishly love another without her own character being immeasurably benefitted thereby. So, because of these friendships the culture of the heart is not being neglected, while the mind is stored with knowledge.

When the girl who has received from her college an all around development, takes her place in the world, she will be fitted to fill any position. She will know how to use wisely and well the power of her beautiful womanhood and to employ her treasures of mind and heart in brightening other lives.

EVA G. RICHARDSON, *Beta Tau.*

**OUT OF THE FULLNESS OF THE HEART.**

It was one of my busy days. Consequently I was enjoying a season of idleness. It is a delicious place to idle in, the Radcliffe Library, if for no other reason than the edification of seeing every one else so industrious. Here, secure from masculine invasion, the petticoated tribe dispose themselves in amiable comfort. Some are curled upon the broad, cushioned window seats, whence glimpses of Dr. Mackenzie's church may give more meaning to pages of ecclesiastical records, or a view of the Washington Elm lends a more vivid significance to Colonial History, or perchance, a sight of sundry brawny youths in crimson sweaters practicing football on the common beyond, graphically illustrate the Darwinian "Survival of the Fittest."

The more ascetic sit rigidly at the long tables, elbows planted, heads propped, eyes glued to bulky tomes, degrees with "frills", shining in the distance.

Hard by, the more voluptuous are ensconced in the capacious chairs before the open fire at the upper end of the room. Their literature appears to be of the somniferous variety for they have the air of those who see visions and dream dreams or perhaps all literature is forgotten as two or three gossip softly on topics more vital than French or Economics.

Near the little table I had appropriated, sat a girl hunched up on the step ladder forgetfully absorbed in a reference book she had just come to search for, from an adjoining room. She glanced absently toward my corner and then I saw a sudden look of recognition flash into her face as her eyes caught the Kappa key, posted conspicuously, I must admit, on the front of my shirt waist. She rose and came to me smiling, "Excuse me, but you are a Kappa, are you not?" I plead guilty and discovered by a similar sign that she belonged to the Greek letter ranks, though under different colors from my own. "Do you know there is a Kappa in the History-room?" continued my new friend, "I happened to see her key just before I came in here".

The young woman was very happy in affording the sisters she had discovered an opportunity to give each other the grip and so a new friendship was ushered in.



"I always feel," confessed one of the younger members of the Harvard Faculty," as if the atmosphere of Fay House were charged with femininity and therefore I hasten to bolt."

It is this very condition, I think, that makes Radcliffe an unsuitable place for fraternities. The college is one big sisterhood as it is, and the girls all play together in the "Idler," the one Social Club. Nevertheless, one is very glad to have had her previous incarnation in an Alma Mater where fraternities flourished.

When the freshman Kappa wooed and won finds herself a wearer of the key, she thinks of the little golden symbol as a talisman that is to enhance the joys and soothe the sorrows of the next few years of college life. She is mistaken only as regards the limit placed upon her happy forecasting. The enduring sweetness and beauty of the bonds is that they unite us in a life membership. And one Kappa, at least, can testify that five years of alumnae vicissitude have not diminished but rather increased her affection for the little badge which means so much. To meet a Kappa anywhere is to find a friend, and friendship makes life quite worth the living.

Theresa Peet, *Beta Zeta*.

### FRATERNITY POLICY.

Freshmen and other seekers after truth ask frequently "Just what are fraternities for? Surely you do not claim to have discovered friendship or to have taken out a patent on loyalty?" Another often says, "My daughter has friends. I think she will always have them. In what does your fraternity differ from other friendships, or how can one good fraternity differ from another?" Now every one of us ought to have an answer, a definite answer to this. We may tell them that fraternity is organized friendship, loyalty with a creed, mobilized troops of comrades; we may enlarge upon Kappa ideals and aspirations; but when it comes to pointing out our own peculiar aims, we need to offer the uninitiated a definite policy. It is just like any other organization,—a church, a political party, a mutual benefit association,—those who ask about it have a right to demand a creed, a platform, a constitution of some sort.

Suppose we take the policy of our chapter and our fraternity,

study it, compare it with that of other fraternities, define it, devote ourselves to it; would it not produce a wonderful effect among us and could it not be made to tell upon those whom we urge to join us?

It is a golden thread, this policy of ours, which runs subtly, often invisibly, through all the network of hopes and plans and affairs of every chapter and province; an indefinable, yet commanding genius that has guided the fraternity successfully thus far and, if we use it as it deserves, we shall find in it an argument worth dozens of glittering generalities about 'ideals and aspirations.'

Call it conservatism, solidity, sincerity, absence of underhand methods, call it anything that is what our organization truly represents to us, and we shall understand better what we have to offer and those outside what they have to gain. In the humble judgment of one Kappa, a frequent reiteration of those special articles of our fraternity creed to which we owe whatever success we may have had, and the emphasis of the points wherein we believe ourselves superior to 'our friends, the enemy' is a salutary practice. Not that we need assume an attitude of thankfulness that we "are not as other men are" for good neighbors can flourish in spite of differing creeds and party affiliations, but we do need to give a reason for the faith that is in us.

The alumnae and seniors understand our policy best, perhaps. They have seen it come out triumphant again and again. Let them explain it as best they can to lower classmen and pledglings so that when the rushing season comes with all its quakes and tempests in a teapot, the chapter may pursue the even tenor of its way, hitching its wagon to a star that seldom dims and never sinks.

May I say, too,—don't talk it over with other fraternities? Let them discover your tactics, if it so happens. If they adopt the conservatism, the sincerity, the above board methods, which we are wont to believe characterize Kappa dealings, all well and good. Then we shall see in the open what we have long cherished in our secret hearts and can all the more confidently present our policy to the next delegation of doubting mothers or argumentative brothers, who stand guard over the new girls.

In short, have a policy and stick to it!

MARION E. TWISS, *Beta Nu.*

*THE RIGHT SPIRIT.*

There is a certain wraith which is earnestly evoked during the football season and rests quite peacefully in some retired spot during the rest of the year, and is known as college spirit. To be true to college spirit one needs only to yell with vigor and to declare and to believe if possible that one's own college has the highest standing, the finest lot of men, the nicest girls and the best foot ball teams in existence. The spirit of some fraternities is very similar to this. If the members have done their best to give every one the impression that theirs is the only fraternity worth belonging to, if they are ready to stick to each other through thick and thin, right or wrong, they think they have done their whole fraternity duty and have been quite true to their fraternity spirit.

To begin at the wrong end of a definition, we may say that this is what the right Kappa spirit is not. Our first thought is that the essential of Kappa spirit is loyalty. We must indeed be true to our fraternity, our chapter and our friends if we would have a basis on which to build, but if the whole of Kappa spirit is included in this adherence to those to whom our vows bind us, it is a very selfish organization to which we belong. Our loyalty to the fraternity, our love for its members, is not an end in itself, but a means and a very strong and effective one by which we may rise to finer aims and nobler accomplishments.

The main objection which is made to fraternities is their exclusiveness ; we must make our fraternity inclusive. The whole college must feel the influence of the gracious kindness, the irreproachable honor, the breadth and strength of character for for which Kappa Kappa Gamma stands.

We have often heard of late that our policy is intensive, not extensive. Whatever is true of our policy, the right Kappa spirit is extensive as well as intensive. It reaches out to all that is good and lovely, it grows with the years and with the progress of the different colleges.

Perhaps, after all, the essence of Kappa spirit is loyalty, but loyalty in its broadest sense, when we are true to our highest ideals, when we are true to that which is best in ourselves, then

we glow with the real fire of fraternity spirit, a fire of our own kindling. It moulds us and influences us, yet we ourselves make Kappa spirit by our thoughts and actions. May we keep that spirit of Kappa free from taint of thoughtlessness or of selfishness, a constant inspiration to truth and honor and charity !

*Chi.*

### THE NECESSITY OF ROUTINE.

It is the misfortune of most organizations to fall now and then into careless, unsystematic ways, and fraternities form no exception to the rule.

This weakness is due to no sudden abandonment of system but to a gradual relaxation, which is almost imperceptible until the mischief is done. The blame for this laxity cannot be laid at the door of any one officer of the chapter, nor to any single open infringement of previous custom. Its progress is so insidious that before the unsuspecting victims are aroused, it holds them in its powerful clutches. And then a reformation becomes necessary to reinstate the chapter on its old basis.

This may not seem such a serious matter to some as I believe it to be, but those who have seen and experienced the evils resulting from a lack of system and order, will surely bear me out in my conviction that it is of the utmost importance.

A certain amount of routine must be endured for the sake of strong, healthy organization. We must not be impatient at it, for without it there would be no framework on which to bind the beautiful externals of fraternity life.

Connected with the too great liberty of which I have spoken is the danger of allowing the chapter to become little more than a club for social chat and gossip among the girls. Of course it would always be for us who have taken the sacred vows of Kappa Kappa Gamma, a club more precious and of more meaning than any other but we must not let our fraternity descend to that level.

By attending carefully to our regular business, by singing our fraternity songs, by talking over matters of general fraternity interest instead of spending our time in unprofitable and harmful gossip about our petty local rivalries, we may help to keep our chapter life up to the standard.

We ought to be unusually careful about these things when new sisters come for the first time into our circle. Their solemn promises and binding vows, the high ideal which our fraternity sets before them are fresh in their minds and by some unkind remarks or idle chatter we may sorely wound the heart at that moment so tender and sensitive.

Let us try to make our chapter meetings all that anticipation promises and let us cultivate among ourselves such a spirit of loyalty and love, not only for one small division of the great whole, but for that wide-spread, united body of Kappa Kappa Gamma, that we shall count no sacrifice too great to make for her, that we shall have her welfare so deeply at heart as to always consider her before ourselves.

R. M. H., *Gamma Rho.*

## Alumni Department.

### ZOE N. SMITH.

Not only among the sisters of her chapter but in any meeting of the later Hillsdale College Alumnae some one is sure to ask about Zoe Smith, so closely has she during the past eight years identified herself with the life of the college.

During the preparatory course, later in the music department, and then as a classical student, she won for herself many honors and a wide circle of friends. Not the least of these were gained through her musical talents; for, both in her vocal and instrumental music, she is possessed of more than ordinary ability. In 1892, although a mere girl, she supplied a vacancy on the Aeolian Quartette and made a concert tour under the care of two older Kappa sisters of the company.

In her college work she made a specialty of languages and literature, gaining honors in Greek and French. She filled all the positions of honor which her classmates had power to bestow upon her, and served for several terms upon the staff of the Hillsdale *Collegian*. In 1898 she won the Ambler Oratorical Prize, and the same year was appointed by the faculty to the place of assistant librarian, which position she filled acceptably for two years. Her poetic ability which had often displayed itself in the columns of the *Collegian*, and in the halls of her literary society, was recognized by her class in the choice of Miss Smith for class poet. Since her graduation she has been filling the place of teacher of Latin and music in the Bloomington, Ills. High School.

In the social life of the college, Miss Smith has always been prominent; in fraternity life, most earnest and loyal. She is one of those to whom the sisters of her chapter always turn for aid and counsel, the doors of whose home have ever been open to Kappa gatherings and whose influence has done much to raise to a high plane the standard of Kappa chapter. She has held all the chapter offices, and has been a thorough student of the history and workings of the organization. She was the delegate of Kappa chapter to the convention of 1896 and was prepared to



ZOE N. SMITH.





take the examination for second degree, that year abolished by act of convention.

Perhaps the secret of Miss Smith's success in so many different directions and of her universal popularity, is that whatever her hand findeth to do, she doeth with her might ; the humblest duty is not forgotten, and she ever carries with her the sunshine of a loving heart, a ready hand, a womanly presence.

CORA H. BAILEY, *Kappa*.

#### THE KAPPA KAPPA GAMMA CLUB OF GREENCASTLE.

The programme of the work of Iota's alumnae for the past year is published here to show what one association has done and as a suggestion for the work of other associations :

- October 7. President's Day. Business Meeting.  
 November 4. The Tourist in Paris. Topographical View, Professor Minnie Kern ; Present Government of France, Mrs. Dora Lloyd Preston.  
 December 2. Environment. Historical Places, Miss Minnetta T. Taylor ; Versailles, Mrs. Agnes B. Dunlavy ; Orleans, Miss Laura F. Florer.  
 January 6. The French. Social Life, Mrs. John Cairns Tarr ; Domestic Life, Miss Mary Bicknell ; Shops, Miss Jessie Neff.  
 February 3. Amusements. Theatres, Mrs. Bertha Clark Tucker ; Parks, Miss Emma Bicknell ; Music and Music Halls, Miss Flora Mathias.  
 March 3. Architecture. Cathedrals, Miss Stella B. Perkins ; Palaces, Mrs. Annie Payne Ader ; Monuments and Institutions of Learning, Miss Katherine B. Miller.  
 April 7. Art. Artists and Art Schools, Miss Harriet Joslin ; Barbizon, Miss Gertrude McCoy ; Famous Works of Sculpture, Mrs. Grace Johnson Nelson.  
 May 5. Art Galleries. The Louvre, Mrs. Louise J. Longden ; The Luxembourg, Miss Hadde C. Daggy ; The Nationale Bibliotheque, Mrs. Harriet Burris.  
 June Reunion. Commencement Week.

The club numbers twenty-six members and Mrs. James B. Nelson is its president.

*THE KEY.*

## PERSONAL NOTES.

## BETA EPSILON.

The name of Louise Dunn as tutor in Botany, again appears in the Barnard College Catalogue for the coming year.

## PSI.

Grace Neal Dolson, '96, has been appointed Professor of Philosophy at Wells College, Aurora, N. Y.

Helen Whipple, '00, will teach in the Binghamton, N. Y., Free Academy next year.

## XI.

The marriage of Elizabeth Milne to Mr. Frank Ewing occurred at Washington, Pa., Thursday, May 24. Mrs. Ewing's future home will be 552 West Decatur St., Decatur, Ills.

## IOTA.

Mrs. Albert J. Beveridge, who has been very ill at the Dansville, N. Y., Sanitarium is rapidly regaining her health.

## CHI.

Isabel Clark has completed a year's work in mathematics at Cornell and will teach mathematics next year at her home in Mandan, Dakota.

## SIGMA.

Florence Winger, '98, has been awarded a fellowship in philosophy at Cornell University for the year 1900-1901. For the last two years she has held a philosophical scholarship there.

## OMEGA.

Mr. and Mrs. John McGowan announces the marriage of their daughter Dorcas Wright to Mr. Henry Wallace Boyle, Wednesday, April the eighteenth, Philadelphia, Pa. At home, after May fifteenth, 2328 West Thompson St.

## BETA ETA.

Bertha Chapman, will be director of the work in Nature Study in the Oakland city schools next year.

*Parthenon.*

Looking back over a few numbers of THE KEY, I was greatly interested in an article from Beta Tau on initiations. The writer felt that more than one initiation during the college year was harmful as showing that perhaps the chapter did not know its own mind at the first, or that they were arranged to suit the girl's convenience in joining, or that one or two girls joining at an extra initiation would lose the deep and subtle bond existing in a class joining together.

**Holding Initiations**

This, it seems to me, is the wrong idea. It is very difficult, nay, almost impossible, for the chapter to meet and know all the girls in the entering class in the comparatively short time that comes before asking day. Only those are noticed who are in some way conspicuous members of the new organization or who have been brought to our attention by common friends. Perhaps we ask such girls, they come to us and our initiation is over, but are there not many others who, as time goes on, become more and more prominent, whom we get to know and appreciate and whom we should be glad to have with us ?

By holding another initiation we are able to enjoy the companionship of these girls for the rest of the college year ; they are brought into the fraternity when it is at its best, and before the older members go out. The recent initiates are all brought more quickly into the strong bond of sisterly feeling that unites us, for at no time is it stronger than at an initiation, and it gives those older girls who are to leave the active chapter in a short time, a far more intimate personal sympathy with the new members than could otherwise be the case.

Let us not be afraid therefore to ask and initiate again, and yet again during our college year, glad of a chance to welcome new members to our sisterhood.

*Beta Epsilon.*

---

In many fraternity questions rules and exceptions are so evenly balanced that it is a toss up between them. Especially is this true of the possible rule of having but one initiation a year. To

be sure, when there is but one, that one can be grander. But which does the most for a fraternity, an elaborate initiation or a desirable girl, who has been so wisely slow in

**Duty to Pledglings.** making up her mind that she would have to remain a pledgling a whole year but for another initiation? The relation of the pledgling to the chapter is certainly sweet, but is it fair to keep a girl so long out of affairs which she should learn at the outset to consider her very own. A pledgling feels no responsibility. If she lives a long time in this blissful state, does she not become too lazy to realize the duties which comes with initiation?

In the bustle of rushing season, a girl, as soon as she is pledged is bound to be neglected more or less. So there is the other possibility of her becoming dissatisfied and breaking her pledge.

Although realizing the weight of Beta Tau's objection, do you not think that in maintaining the ideal too much may be sacrificed for the fraternity?

*Psi.*

In the last number of THE KEY the editor has strongly set forth the question of alumnae representation at convention. This should be carefully considered by each chapter and it has prompted me to write a few words.

**Alumnae  
Representation.**

It seems only fair to our alumnae sisters that they should be more than heard in convention. It has been through the undergraduate efforts of these alumnae that the various chapters of Kappa Kappa Gamma have grown and prospered. They have withstood all hardships and have faithfully worked in order to see their chapters come up to the ideal standard of Kappa Kappa Gamma. As alumnae they have encouraged the younger girls, kept them in cheerful spirits in time of temporary defeats and have opened their houses as well as their hearts in order that these college girls might have the same enjoyment from their chapter life that they have had.

What chapter has not some alumna who is always ready with advice and encouragement and is it not by following this advice

that the best results are obtained! Why, then, should not our fraternity as a whole be benefitted by the combined brains of our alumnae?

A. W., *Sigma*.

---

Are we enthusiastic about the convention? Do our friends call us convention mad? If so, we are each making our plans to visit Columbus. When that is settled, many minor questions will flock in until we shall be fairly bewildered, for the work only begins, when the decision to attend is made.

**The Coming  
Convention.**

At convention we shall have a chance to find out how little we know about many subjects concerning which we have no right to be ignorant. It is there that we can measure our own standards by others. There questions will arise and decisions will be called for.

It is an education to go to convention, but the education should begin in the chapter before going. If we study the questions presented and know their bearings, we shall be able to act from our own knowledge of the case and will feel the power which does not come from acting with the majority, without a personal knowledge of the matters under discussion.

There is every reason to expect a convention of unusual interest. Many new plans are to be presented. To prepare for this will require genuine effort, but the woman who puts the most time and thought into her preparations will be the one to reap the largest benefits.

*Epsilon*.

---

To my mind more fraternity spirit would be manifest among our alumnae if more of them would attend our conventions. I am afraid many of them feel that their presence is not needed. The enthusiasm of those who have attended them is especially marked.

**Our Alumnae  
at Convention.**

Surely the instructive reports always brought back to us should inspire us to do better work and to be anxious to participate in these biennial gatherings, not only while in school but after our college days are over.

After many women say good-bye to college, their minds are taken up with other cares and they seem to lose that spirit of loyalty which they once so earnestly showed. Let us hope it is not because they do not love their fraternity and cherish the friendships made there, but because they lack that intense interest which is so much needed.

Can you think of any other organization where full active membership is given for a term of four years at the end of which so many privileges are taken away? The alumnae no longer feel at home in the chapter which they took so much pride in building up and sustaining. While we always feel cordially towards the alumnae who visit us from time to time, yet many of them say they feel like exiles. Should they not have certain active duties and privileges? I do not believe that their seeming indifference is due so much to want of interest as to the dread of interfering with some of the prerogatives of the active members.

I wish more of the alumnae would attend the convention. We need their advice and they need our zeal.

Several years ago, a couple of articles were written about a degree of B.K.Ph. and I hope this convention will see fit to take action upon it. Does it not seem advisable that our girls who are leaving college should still be allowed some of the active privileges and honors of their beloved fraternity? If the truths of our teachings are kept in mind we shall be better and nobler women.

---

Sigma's article in the January KEY suggests the question whether the election of chapter officers is always governed by a conscientious and firm conviction of the capability of the candidates for their respective positions. Especially in electing a president do we not sometimes vote with some other motive than the desire to see the office filled by the one who is the most capable? Are the mere facts that a girl has come through to the last half of her senior year without having held the office, or that she has done more than others for the chapter, or that she is expecting to be chosen and will be hurt if she is not, sufficient reason for electing her in preference to one vastly more capable? Surely we all ought to have the good of our chapter too nearly at heart to wish

**Election of  
Chapter Officers.**

to fill an office with some one who can not fill it efficiently. Let us remember that each one has her own peculiar share to contribute to the happiness and prosperity of the whole and that the humbler duties are just as necessary as those which bring with them more authority and honor. Then when election comes, we shall bring to it a sincere purpose to put the right girl in the right place.

*Beta Gamma.*

Freshman discipline! Has any other phrase ever created more varied thoughts or feelings than this? That such discipline is to a certain degree, most necessary in all **Freshman Discipline.** fraternity life will doubtless be conceded. But the subject is a delicate one and must, like the dear freshmen, be handled with care.

In spite of the general companionship and love which ought to exist in every chapter, we all realize that a certain amount of class etiquette should be observed. The senior should be the one to whom the rest of the chapter looks for advice and whose opinions are to be seriously considered. If she is the right sort of girl this happens naturally and the relation is neither forced nor strained.

The most difficult problem, however, in the class relations is that of the freshmen. It often happens that new initiates have a most sudden fall of pride after the all flattering rushing is over. They have even been known to be unhappy in their first few weeks of fraternity life and this is what the girls in the upper classes must guard against.

Show the freshman that every girl must take her turn in doing the more irksome little duties in the chapter and that it is only fair and just that she should be willing to take her turn. Above all things make the new Kappa realize that the older girls are not trying to domineer over them, or to show their superior power. Let all be good will, so that the new born sophomores will sorely miss jumping up from luncheon when the telephone bell rings and she hears the girls cry, "Freshie, answer the 'phone!"

If the proper spirit is felt by each individual girl, the whole chapter will be bound together by unseen ties and the freshmen will consider it their privilege, not their duty, to perform the little tasks which even the strongest and best girl in the chapter has done in her turn.

ANNABEL E. WENZELBURGER, *Pi.*

**Chapter Letters.****ALPHA PROVINCE.**

## BETA EPSILON—BARNARD COLLEGE.

*Active Members.*

Virginia Crocheron Gildersleeve, P.G.,	Madalene Heroy, '01,
Edith Striker, P.G.,	Jannetta Gordon Studdiford, '01,
Maude Wilcox, P.G.,	Elizabeth Allen, '02,
Helen Cole, '00,	Mary Hunt Budd, '02,
Jeannette Bless Gillespy, '00,	Eleanor Phelps, '02,
Mary Locherman Goldsborough, '00,	Hilda Le Grande Lockwood, '03,
Florence Leslie Kyte, '00,	Janetta Alexander McCook, '03,
Evelyn Osborne, '00,	Katherine Ellen Poole, '03,
Lisa Delavan Bloodgood, '01,	Madeleine Dayrell Skinner, '03,
Mary Lavinia Eaton, '01,	Bessie Ilsley Thompson, '03.
Cerise Emily Agnes Carmen, Sp.	

*Chapter*:—Number of active members, 21; total membership from chapter establishment, 61; number of year's initiates, 5. Honors conferred by college: Alice Duer, '99, prize in mathematics; Edith Striker, '99, Hublitzell History Medal; Lisa D. Bloodgood, '01, sophomore honors in classics; Madeleine D. Skinner, undergraduate scholarship. Honors conferred by students: Virginia Gildersleeve, president of graduate club; Evelyn Osborne, chairman of class day committee; Jeannette B. Gillespy, class poet of 1900; Jannetta G. Studdiford, vice-president of junior class; president elect of senior class, chairman of junior ball committee; Mary L. Eaton, chairman of executive committee of undergraduate association; Elizabeth Allen, president of sophomore class, business manager of 1902 Mortarboard; Mary H. Budd, treasurer of undergraduate association, secretary elect of undergraduate association.

*College*:—Number of Faculty in collegiate department, 41; number of Columbia instructors whose courses are open to Barnard students, 71; number of members in collegiate department; regular undergraduates, 170; special students, 39; music students, 41, graduates, 84; number of women in collegiate department, 209. Men's fraternities, none; women's fraternities, Kappa Alpha Theta, 16; Kappa Kappa Gamma, 21.

Beta Epsilon is behind most of the other chapters in presenting her new members to the fraternity at large, but they will not be the less welcome for that reason. The girls we have taken into the chapter this year are Hilda Lockwood, Janet McCook, Katherine Poole, Madeleine Skinner and Bessie Thompson, and



we feel that we have made a very happy addition to our number.

Not long ago we gave a tea to our Barnard Kappa alumnae and we greatly enjoyed the inspiration of meeting and talking with women who have had a longer experience in fraternity life than we ourselves. Otherwise the spring has passed very quietly for us with no especial happenings of which to tell. Our good wishes to all for a most pleasant summer time spent in rest and refreshment.

## PSI—CORNELL UNIVERSITY.

*Active Members.*

Ethel Montgomery Andrews, '00,	Helen Winifred Whipple, '00.
Julia Andrew Cochrane, '00,	Gordon Fernow, '02.
Louise Hempstead, '00,	Eliza Dorrance Huestis, '02,
Frances Talbot Littleton, '00,	Louise Powelson, '02,
Beulah Genevieve Morgan, '00,	Olive Butler Morrison, '03,
Allegra Eggleston Seelye, '00,	Carrie Van Patten Young, '03,
Charlene Adele Tobias, '00,	Isabel Clark, Sp. (X).

*Chapter*:—Number of active members, 14; total membership from Chapter establishment, 113; number of year's initiates, 2. Honors conferred by college: Louise Hempstead, election to Phi Beta Kappa and to Sigma Xi; Florence Winger, Fellowship in Philosophy at Cornell University. Honors conferred by students:—Louise Powelson, election to presidency of the "Sports and Pastimes Association"; Eliza Dorrance Heustis, election to the "Cornellian" Board; Helen Winifred Whipple, 1900 Class Book Committee; Louise Powelson, Manager of the Basket Ball Club; Carrie Van Patten Young, Assistant Manager of the Boating Club.

*College*:—Number of faculty, 315; number of students, 2231; Men's fraternities, Zeta Psi, Chi Phi, Kappa Alpha, Alpha Delta Phi, Phi Kappa Psi, Chi Psi, Delta Upsilon, Delta Kappa Epsilon, Theta Delta Chi, Phi Delta Theta, Beta Theta Pi, Psi Upsilon, Alpha Tau Omega, Phi Gamma Delta, Phi Delta Phi, Phi Sigma Kappa, Delta Tau Delta, Sigma Phi, Sigma Chi, Delta Chi, Sigma Alpha Epsilon, Delta Phi, Kappa Sigma. Women's fraternities; Alpha Phi, 18; Delta Gamma, 19; Kappa Alpha Theta, 15; Kappa Kappa Gamma, 14.

Greetings to the other chapters from Psi!

We ushered in the spring term by the delight of all true Kappas—an initiation, and we take pleasure and pride in introducing to the Kappa world our new member, Carrie Van Patten Young, '03. The initiation was held at the beautiful home of Professor Fernow, the father of one of our Kappas.

We have another piece of good news to tell you—one in which

Gamma Rho will especially rejoice with us. Louise Hempstead, our affiliate from Gamma Rho, has brought honor and glory to Kappa Kappa Gamma this spring by winning elections to both *Phi Beta Kappa* and *Sigma Xi*. This, too, when she has been only *two years* at Cornell! Such a thing has probably never happened before in the history of the University. Sigma also has cause to rejoice with us for Florence Winger after having held a scholarship here for two years, has now been awarded a fellowship in philosophy for the coming year.

Ten of our girls will doff the cap and gown this spring and join the ranks of the alumnae. Consequently we will have a very small chapter when we return to college next year. We are hopeful, however, of early persuading some of the members of next year's freshman class to cast in their lot with ours. Annette Harland Austin, we are glad to say, will return to Cornell next year to get her degree.

Psi sends best wishes for the summer holidays.

#### BETA BETA—ST. LAWRENCE UNIVERSITY.

##### *Active Members.*

Margaret Rebecca Austin, '00,	Mabel Carrie Fields, '02,
Mary Blanche Barlow, '01,	Lena Olga Idler, '02,
Mabel Harlan Benner, '01,	Eleanor Courtney Mulry, '02,
Mary Vilura Conkey, '01,	Minnie Rowland Root, '02,
Mina Louise Freeman, '01,	Chloe Emma Stearns, '02,
Harriet De Lance Jackson, '01,	Melva Perrin, '03,
Helen Maverette Probst, '01,	Erma Hale, '03,
Eva Conant, '02,	Alice Poste, '03.

*Chapter*:—Number of active members, 16; total membership from chapter establishment, 138; number of year's initiates, 3. Honors: Amy Lulu Lyon, Phi Beta Kappa and highest honors; Jessie Thatcher Robertson, Honors in Latin and English; Mary Vilura Conkey, Junior Annual Board; Mabel Harlan Benner, vice-president of Thelomathesia and on Latch String Board; Minnie Rowland Root, Laurentian Board; Eva Conant, vice-president of 1902.

*University*:—Number of faculty in collegiate department, 10; student's in collegiate department, 98. Men's fraternities, Beta Theta Pi, 25; Alpha Tau Omega, 27; Women's fraternities, Delta Delta Delta, 14; Kappa Kappa Gamma, 16.

It is always a source of pleasure and frequently of amusement

to hear our alumnae who come back to visit us, relate the experiences of their college days,

Every year at Commencement there is a reunion of the Beta Beta girls and we gather around the alumnae and listen to the story from the good old Browning days until today. The reunion this year will doubtless be the largest and happiest for many a year.

On the afternoon of May 11, the active girls gave a reception to the faculty and residents of the town and in the evening gave a reception at the Lodge to the students of the college, following it by a dance at the gymnasium. Miss Sarah Cauble of Delta helped us to receive.

All the active girls expect to return to college in September and hope to welcome a large freshman class.

#### BETA TAU—SYRACUSE UNIVERSITY.

##### *Active Members.*

Mabel Allis, '00,	Mabel Yeomans, '00,
Mary A. Bates, '00,	Harriette Curtiss, '00,
Edith L. Osborne, '00,	Marion E. Wright, '00,
Grace F. Wight, '00,	Eleanor Thayer, '01,
Adelaide Jeffers, '00,	Carrie A. Riker, '01,
Bessie H. Goodale, '01,	Edna L. Miller, '01,
Grace N. Church, '01,	Frances A. Sager, '01,
Elizabeth P. Brown, '02,	Ella M. Rich, '02,
M. Gertrude Gardner, '02,	H. Elizabeth Tanner, '02,
Ruth C. Vorhees, '02,	Jessie A. Knapp, '02,
Eva G. Richardson, '02,	Mary E. Preston, '02,
Bessie E. Olmstead, '02,	Flora M. Metcalf, '03,
Mary C. Reynolds, '03,	Florence R. Knapp, '03,
Anna B. Brockway, '03,	Marion Sturdevant, '03,
Harriet O. Fox, '03,	Annetta Williams, '03,

Louise Keller, P. G.

*Chapter:* Number of active members, 31; total membership since chapter establishment, 164; number of year's initiates, 13. Honors: Eva M. Bryan, summa cum laude diploma, Phi Beta Kappa; Marion E. Wright, class day historian; Carrie M. Allen, elected to be instructor in biological department. Beta Tau is also represented in the Y. W. C. A., Woman's League, among the class officers on the Onondagan Board and on the Basket Ball Team.

*University:*—Number of faculty in collegiate department, 38; number of students in the university, 1402; in collegiate department, 727, number of women in collegiate department, 328. Men's fraternities; Delta Kappa

Epsilon, 20; Delta Upsilon, 32; Psi Upsilon, 28; Phi Kappa Psi, 38; Phi Delta Theta, 33; Beta Theta Pi, 33. Women's fraternities: Alpha Phi, 32; Gamma Phi Beta, 37; Kappa Kappa Gamma, 31; Kappa Alpha Theta, 32; Pi Beta Phi, 31; Delta Delta Delta, 21.

The melancholy days have come which no student loves, the days when examinations strike terror to the hearts of most of us and after them came the commencement festivities. Six of our girls bid good bye to college life this year. Although they are saying hopefully "others will take our place, loyal in heart as we," the rest of us are already wondering what we will do without them. Yet it is a comfort to know that several of them will be near enough to come and see us often.

There is to be a grand rally of all alumni during commencement week and we are anticipating seeing many Kappas. The class of '92 will hold its reunion at our chapter house, June 12, and all the fraternities are planning to hold their banquets the same evening. We are expecting an unusually joyful time because of the larger number who will be with us.

Syracuse has been especially honored this spring in having the Psi Upsilon convention here. Such gatherings make all Greeks enthusiastic.

Beta Tau sends her best wishes for a happy vacation to you all !

#### BETA ALPHA—UNIVERSITY OF PENNSYLVANIA.

##### *Active Members.*

Sarah P. Miller, P. G.,	Florence D. Sargent, Sp.,
E. Ethel Hayes, '01,	Adeline H. Jacobs, '02,
Mary H. Howell, P. G.,	Mary R. Scattergood, '02,
Mary H. Geisler, '02,	Margaretta Atkinson, '02,
	Nellie A. Heller, Sp.

*Chapter*:—Number of active members, 9; total membership from chapter establishment, 48; number of year's initiates, 2.

*University*: Number of faculty, 104 college, 156 other departments; number of students, college 968, total, 2,673. Men's fraternities: Phi Kappa Sigma, 42; Delta Phi, 21; Zeta Psi, 30; Delta Psi, 40; Phi Kappa Psi, 27; Phi Delta Theta, 29; Alpha Tau Omega, 14; Phi Gamma Delta, 25; Sigma Chi, 25; Delta Upsilon, 33; Psi Upsilon, 25; Kappa Sigma, 25; Beta Theta Pi, 33; Alpha Chi Rho, 23; Delta Tau Delta, 17; Phi Delta Phi; Nu Sigma Nu, 18; Phi Alpha Sigma, 47; Alpha Mu Pi Omega, 46; Delta Sigma Delta; Mu Phi Alpha, 24. Women's fraternities: Kappa Kappa Gamma, 9.

Our college year is almost at an end and as we pause to look back over the way that stretched out so far in the beginning but now seems so short, we find it full of loving memories of earnest work mingled with pleasures of all kinds, memories which make this one of our very happiest years.

From the time the Woman's Club actually opened with its house warming, this spot has been the scene of never ending festivities. Any afternoon from four until six, you will see groups of girls in the deep window seats gaily chatting over the events of the day, while the hostess busily presides at the dainty tea table.

Early in the winter the Dean of the College addressed the women of the university at the Club House. Later Mrs. Lamberton, wife of Professor Lamberton, read Macbeth for the women students. Then Mrs. Richards of the Boston School of Technology spent an afternoon with the girls at the club. The Sophomore Play, which was a decided success, closed the social season.

With the help of our alumnae we are able to again offer a table at Wood's Holl as a prize to undergraduates in biology.

The approaching examinations and the excitement of commencement make us realize too truly that we soon must separate. Beta Alpha will lose three of its members this year but with this thought, sad as it is, comes the promise of our golden key. The world is so wide that in a short time we may be apart, apart in one sense of the word, but always united in the bonds of K. K. P.

Beta Alpha sends happiest wishes for the summer holidays.

#### BETA IOTA--SWARTHMORE COLLEGE.

##### *Active Members.*

Anna Katharine Hines, '00,	Elizabeth Dinsmore, '01,
J. Ethel Thompson, '00,	Amelia E. Hines, '02,
Katharine Pfeiffer, '00,	Gertrude Griscom, '02,
Fanny Bennett Cheyney, '01,	Hallie Hulburt, '03,
Lulu von Randohr.	

*Chapter*:—Number of active members, 9; total membership from chapter establishment, 41; number of year's initiates, 4.

*College*:—Number of faculty, 16; instructors, 28; number of students, 208. Men's fraternities: Phi Kappa Psi, 14; Kappa Sigma, 14; Delta Upsilon, 18. Women's fraternities: Kappa Alpha Theta, 15; Pi Beta Phi, 14; Kappa Kappa Gamma, 9.

In the midst of examinations, in the excitement and rush of these last few weeks we pause once more to send our greetings to all the Kappas. It hardly seems possible that before the next KEY reaches us our girls will be scattered, but realizing that every day brings convention nearer we think more and more about the last week of August.

Just before the spring holidays came a most delightful surprise. It was from our alumnae again, who gave us a dance at the Belmont Cricket Club. It was a red letter day for us. Then the next week we went into Philadelphia to the home of one of our brides, Hallie Haines Hodge, who gave a dinner for "just the actives." April 6 was marked with another red line. Picnics are now the order of the day at Swarthmore and so last week we enjoyed our supper in the woods and began to think even more about Brown's Mills. Our annual camping party will be held the first week after the close of college. It has been such a success before that we are all eagerly looking forward to the time when we shall be singing Kappa songs at "Camp Aisy."

A day or two ago we received cards for a tea to be given by the Philadelphia Alumnae Association and we expect there to meet many Kappas from other chapters.

Beta Iota sends to each and all the best wishes for a very happy vacation.

#### GAMMA RHO—ALLEGHENY COLLEGE.

##### *Active Members.*

Margaret Batchelder, '00,	Gertrude Hastings, '02,
Georgiana Crane, '00,	Mary Heydrick, '02,
Ruth Hay, '00,	Marguerite McClintock, '02,
Iva McCray, '00,	Dema Bard, '03,
Blanche Beecher, '01,	Jessie Marvin, '03,
Bertha Miller, '01,	Clara Miner, '03,
Anna Corbett, '02,	Ada Palm, '03,
	Evangeline Parsons, '03.

*Chapter*:—Number of active members, 15; total membership from chapter establishment, 71; number of year's initiates, 7. Honors: Margaret Batchelder, Georgiana Crane, Ruth Hay, and Iva McCray on the "Senior Twelve."

*College*:—Number of faculty, 14; number of students in the collegiate department, 178; number of women in the collegiate department, 63. Men's fraternities: Phi Kappa Psi, 14; Phi Gamma Delta, 13; Phi Delta

Theta, 18; Sigma Alpha Epsilon, 12; Delta Tau Delta, 4. Women's fraternities: Kappa Alpha Theta, 17; Kappa Kappa Gamma, 15; Alpha Chi Omega, 13.

Gamma Rho has a new baby, Clara Miner, and a pledgling, Sara Eighmy, whom she wishes to introduce to you.

A little more than a week ago we held our annual Pan-Hellenic banquet. Besides the members of the three sororities at Allegheny, we had with us a member of Delta Gamma and one of Delta Delta Delta. We had expected two Alpha Phi's, but they were both unable to come.

Last week the twelve students chosen to represent the Senior class at commencement were announced, and every one was much interested. We are entirely satisfied with the result, as you can see, for all of our graduates will appear upon the "Senior Twelve."

The Phi Psi's moved into a new house this term, and in honor of the event, they entertained their friends at a delightful afternoon and evening reception.

We send best wishes to all the chapters.

### BETA PROVINCE.

#### LAMBDA—BUCHTEL COLLEGE.

##### *Active Members.*

Mary L. James, '00,	Bessie R. Trowbridge, '02,
Leona S. Reed, '00,	Esther M. Frank, '02,
Clementina J. Barber, '01,	Ethel Grace Jefferson, '03,
Maud Herndon, '01,	Gladys Parshall, '03,
Anna Lydia Durling, '01,	Hattie Hammel, '03,
Ada Vivian Starkweather, '02,	Louise Horix, '03,
Inez Parshall, '02,	Lydia Voris, '03.

*Chapter*:—Number of active members, 14; total membership from chapter establishment, 138; number of year's initiates, 5.

*College*:—Number of members in faculty, 12; number of students, 92; number of women, 50. Men's fraternities: Lone Star (local), 9; Zeta Alpha Epsilon (local), 11. Women's fraternities: Delta Gamma, 11; Kappa Kappa Gamma, 14.

Although another term is rapidly drawing to a close and Lamb-

da girls are still without a fraternity hall, they are quite contented for, by the kindness of Mrs. Parshall, they have the exclusive use of a pleasant room, at first tolerably well filled with furniture saved from the fire, now doubly so by the acquisition of a sofa, some chairs and pictures, kindly loaned us by one of the active members.

Our April examination, to our great joy, is past, and though the examination in itself was not so enjoyable, the spread and good time which followed it was a great compensation.

We take great pleasure in telling you that Lambda is the proud possessor of a gavel, presented by the Zeta Alpha Epsilon Fraternity, made from the wood of Buchtel College. But we take still greater pleasure in saying that Lydia Voris, one of the pledges, was initiated on April 28, 1900, at the home of Mrs. Parshall. At the banquet held later at the home of Miss Hugill, one of the former members of the chapter, she and the four girls initiated last fall, received the second degree. It was a highly amusing and not easily to be forgotten occasion.

Louise Horix entertained us delightfully at dinner, May 15. Games were played, Kappa songs were sung, and a charming Kappa souvenir was carried away by each girl.

Best wishes and hearty greetings from Lambda to all the sister chapters.

#### BETA GAMMA—WOOSTER UNIVERSITY.

##### *Active Members.*

Gertrude Vollrath, '00,	Jane Glenn, '02,
Myrtle Fraser, '00,	Bess Johnson, '03,
Mary Mateer, '00,	Clementine Axtell, '02,
Carrie Crowl, '00,	Grace Cover, Sp.,
Winifred Axtell, '00,	Elsie Cover, Sp.,
Effie Pomeroy, '01,	Eleanor Ewing, Sp.,
Frances Langfitt, '01,	Gertrude Morrison, '03,
Anna Ewing, '01,	Elizabeth Kithcart, '01.

*Chapter*:—Number of active members, 17; total membership from chapter establishment, 166; number of year's initiates, 5.

*University*:—Number of faculty, 30; number of students, 456; number of women, 191. Men's fraternities: Beta Theta Pi, 9; Sigma Chi, 5; Phi Gamma Delta, 12; Alpha Tau Omega, 17; Women's fraternities; Kappa Alpha Theta, 13; Kappa Kappa Gamma, 17.

The portals of this school year will soon be closed upon a vast



hall filled with pleasant memories and while we enjoy a review of all the scenes of 'mirth and gladness' in which we as sisters have indulged, we also experience a feeling of sadness in realizing that the time is fast approaching when our circle will be broken. We shall lose six loyal Kappas by graduation and one or two others by leaving college.

Last term one of our resident alumnae, Mrs. Amat, entertained Beta Gamma charmingly with a five o'clock dinner, a repast which embraced all the delicacies of the season and especially appealed to the dormitory girls.

On April fourth, Gypsy Taylor, ex-'99, was married to Alpha Huneker, of Hamilton, Ohio. The marriage ceremony was held in the Methodist Episcopal Church of Wooster and was witnessed by a large circle of friends.

The first of the spring term a pretty initiation service and spread were held at the home of Jane Glenn in honor of our new member, Carrie Crowl, of Mount Liberty, O.

Beta Gamma has issued invitations to Kappa Alpha Theta and other friends for May 24. The function is to be at Westminster Hall and we look forward to it with great pleasure.

This season's athletic excitement has been heightened by the introduction of inter-collegiate games. We have already played with Kenyon and Oberlin and although the scores have been in favor of our adversaries, we nevertheless prophesy great victories for the Wooster team after it has been subjected to more vigorous practice.

In closing Beta Gamma sends best wishes to her sister chapters for a most pleasant summer vacation and the accumulation of a store house of energy to be used during the fall rushing season.

BETA NU—OHIO STATE UNIVERSITY.

The college year is nearly over and soon the girls will be separated for the summer although we hope to be together for a short time as we are planning a house party for the week after commencement.

The last term of the semester has been very gay, for besides the numerous informal fraternity parties, there has been a Battalion Hop and a Junior Promenade, a reception for our seniors and the Senior Promenade are events of the near future.

The University campus is very beautiful now and we spend as much time as can be spared from our studies, out of doors.

We have been much worried over the serious illness of one of our seniors, Anna Howard. Her condition was very critical but we are glad to say that she is now out of danger.

Beta Nu is looking forward with great pleasure to the coming convention. Our alumnae are most kind, helping us in every possible way about our plans and giving us much useful advice. We hope that many Kappas from every chapter will be with us and help to make the convention successful and profitable in every way. May the ties of Kappa Kappa Gamma be much strengthened by our week together.

#### BETA DELTA—UNIVERSITY OF MICHIGAN.

##### *Active Members.*

Helen Dunham, '00,	Zilpha Campbell, '01,
Gertrude Kennedy, '00,	Estella McKay, '02,
Margaret Layton, '00,	Grace Morehouse, '02,
Lucile Morris, '00,	Georgena McSiveaney, '03,
Alice Thorne, '00,	Lura Cochran, '03,
Florence Walker, '00,	Louise Emlaw, '03,
Elizabeth Sundstrom, '01,	Pearl Taylor, '03.

*Chapter*.—Number of active members, 14; total membership from chapter establishment, 69; number of year's initiates, 7.

*University*.—Number of faculty in collegiate department, 108; number of students, 1,343. Men's fraternities: Chi Psi, 18; Alpha Delta Phi, 28; Delta Kappa Epsilon, 22; Sigma Phi, 10; Zeta Psi, 22; Psi Upsilon, 30; Beta Theta Pi, 21; Phi Kappa Psi, 22; Delta Upsilon, 24; Phi Delta Theta, 21; Sigma Alpha Epsilon, 22; Theta Delta Chi, 17; Sigma Chi, 23; Kappa Sigma, 19; Chi Delta Phi, 26; Delta Chi, 29; Nu Sigma Nu, 22; Phi Rho Sigma, 22; PiBeta Phi (medical); Phi Chi, 20; Delta Sigma Delta, 30; Xi Psi Phi, 28. Women's fraternities: Gamma Phi Beta, 22; Delta Gamma, 26; Sorosis, 28; Pi Beta Phi, 17; Kappa Kappa Gamma, 14; Alpha Phi, 20; Kappa Alpha Theta, 20; Delta Delta Delta, 14; Alpha Epsilon Iota, 15; Alpha Chi Omega, 14.

Our pledglings, Zilpha Campbell and Grace Morehouse, whom we introduced to you in our last letter are now full fledged Kappas. The initiation which took place a week before spring vacation was greatly enjoyed. The fun, the solemnity and the pleasure of initiation is well known to you and needs no further

mention. The pleasures of the banquet were increased by having two of our Detroit alumnae with us, Mildred Hinsdale and Belle Donaldson.

Again the university has enjoyed the privileges of May Festival. The "Lily Nymph" by Chadwick and "Hora Novissima" by Parker, sung by the University Choral Union were especially good. The great attraction this year was Schumann Heink.

Examinations will soon be here and of course will bring anxiety, but we shall try to look beyond them to the pleasures of commencement week. And yet there is much sadness in store for us that last week, for we shall be continually reminded that six of our beloved seniors leave us. Whom shall we find to take the places of Helen, Gertrude, Margaret, Lucile, Alice and Florence? We cannot fill their places but we shall try to carry on the work which they have so faithfully done.

Beta Delta sends best wishes for a happy vacation to all her Kappa sisters!

#### XI—ADRIAN COLLEGE.

##### *Active Members.*

Florence May Wilcox, '00,	Florence Celeste Crum, '02,
Jessie Marie Byers, '01,	Christa Yingling, '02,
Ethel Yolton Moorhead, '01,	Harriet Florence Rowley, '03.

*Chapter*:—Number of active members, 6; total membership from chapter establishment, 110; number of year's initiates, 2.

*College*:—Number of faculty in collegiate department, 12; number of students in collegiate department, 173. Men's fraternities: Alpha Tau Omega, 13; Sigma Alpha Epsilon, 12. Women's fraternities: Delta Delta Delta, 11, Kappa Kappa Gamma, 6.

Again Xi sends greetings to her sister chapters. Some very pleasant times have come to us since our last letter. One was an evening spent with the Kappa Club in a happy, informal way at the hospitable home of Florence Reynolds. Another evening, recently, one of our pledglings entertained us with the daintiest of spreads in Metcalf Hall. The singing of Kappa songs and giving of the call furnished the usual enthusiasm.

South Hall's reception rooms never looked prettier than on the afternoon of May 10, when the ladies of the faculty were at home to their friends from three until six. About three hundred

ladies attended and the girls of the college assisted in entertaining the guests.

The students are looking forward to the May Festival which occurs May twenty-fourth and fifth. Many noted musicians have been engaged for that time.

All our interest at chapter meetings is now turned toward the Columbus Convention. Several of Xi's members are planning to attend. It is such a pleasure to know that we shall then know personally many of those whose names are already familiar to us.

#### KAPPA—HILLSDALE COLLEGE.

##### *Active Members.*

Julia Turner, '00,  
May Gurney, '00,  
Sarah Putnam, '01,  
Myra Walworth, '02,  
Bertha Wilder, '02,  
Elva Bailey, '02.

Frances Woodward, '02,  
Idella Akers, '03,  
Eva Doyle, '03,  
Mabel Stewart, '03,  
Florence Birdsall, '03,

*Chapter*:—Number of active members, 11; total membership from chapter establishment, 125; number of year's initiates, 4. Honors: May Gurney, Fellows literary prize, and Maggie Ambler, oratorical prize.

*College*:—Number of faculty in collegiate department, 21; number of students in collegiate department, 241. Men's fraternities: Delta Tau Delta, 10; Alpha Tau Omega, 15. Women's fraternities: Pi Beta Phi, 14; Kappa Kappa Gamma, 11.

This year, a very profitable as well as pleasant one for Kappa, is rapidly rolling by and it will not be many weeks before our farewell meeting when, as never before, the ties of active sisterhood are realized and hard to sever. We are proud of our two seniors who are soon to leave us, and who, we believe, have a bright future before them.

We miss Mary Ward and Libbie Cittey very much this term. Mary is traveling secretary for the Y. W. C. A. in Minnesota and Libbie is teaching in Burr Oak High School.

But let me introduce you to a new pledgling, Harriet Cole and e'er this reaches you two more new sisters, Ethel Gurney and Edith Sheppard will have been brought within the circle of the golden key.

Beside the usual festivities of spring the last few weeks will be especially gay for it is quinquennial anniversary year for Hills-

dale College, and we expect many old Kappa's back, among them Harriet Rice Bates and Shirley Smith. Already we are making plans for a joyful reunion.

At every meeting we talk over the coming convention, feeling that beyond the delights of bringing us all together again as a fraternity, there is a responsibility for each as a chapter.

Kappa sends best wishes for a happy summer vacation.

### GAMMA PROVINCE.

#### DELTA—INDIANA STATE UNIVERSITY.

##### *Active Members.*

Edna Bartlett, '02,	Pearl Fisher, '03,
Effine Blount, '00,	Lillian Gillett, '02,
Harriet Branham, '02,	Mattie B. Lacy, '00,
Margaret Burnside, '03,	Louise Loughry, '00,
Nancy Cox, '01,	Mary Meek, '00,
Millicent Cass, '03,	Madeline Norton, '03,
Olive Dailey, '01,	Mabel Rothrock, '03,
Margaret Drinkut, '02,	Lena Triplett, '01,
Helen Davis, '03,	Vesta Triplett, '02,
Carrie Egnor, '02,	Clara Verling, '02,
	Elizabeth Wifon, '00.

*Chapter*:—Number of active members, 21; total membership from chapter establishment, 130; number of year's initiates, 8.

*University*:—Number of faculty, 60; number of students, 1016. Men's fraternities: Beta Theta Pi, 18; Phi Delta Theta, 20; Sigma Chi, 14; Phi Kappa Psi, 17; Phi Gamma Delta, 21; Delta Tau Delta, 15; Sigma Nu, 16; Kappa Sigma, 14; Phi Delta Phi, 18. Women's fraternities: Kappa Alpha Theta, 20; Kappa Kappa Gamma, 21; Pi Beta Phi, 24; Delta Gamma, 14.

Delta has a new member to introduce to her sister chapters in this letter. Mabel Rothrock is now the proud wearer of the key.

Since our last letter Miss Sargent has paid us a visit. We all enjoyed it very much and we wish all the chapters could have similar privileges.

The annual panthagatric of the fraternity girls of Indiana University was the function of last week. It is a masked reception and banquet which only girls attend and which brings the women's chapters as a whole into closer relation.

Only a few more weeks remain for Delta girls to be together

and we are going to make those as enjoyable as we can. Our next social event is to be a reception for our alumnae when we shall all be together again.

Delta sends best wishes to all the chapters !

IOTA—DE PAUW UNIVERSITY.

*Active Members.*

Marion Wood, '00,	Ethel Cress, '02,
Gertrude Larimore, '00,	Lottie Stoner, '02,
Matilda Bowman, '00,	Lillian Hart, '02,
Nellie Landes, '00,	Howard Root, '02,
Mabel Pavey, '00,	Esther Bechtel, '03,
Lucie Poucher, '00,	Florence Dice, '03,
Blanche Woody, '01,	Sara Darby, '03,
Ethel Chaffee, '01,	Alice Switzer, '03,
Ione Haworth, '01,	Alice Pavey, '04,
Hallie Landes, '02,	Odessa Zeis, '03,
Edyth Gipe, '02,	Jennie Alexander, '01,
	Maud Spinning, '03.

*Chapter*:—Number of active members, 23; total membership from chapter establishment, 112; number of year's initiates, 10. Honors: Stella Hankins, Phi Beta Kappa.

*University*:—Number of faculty in collegiate department, 17; number of students in collegiate department, 635. Men's fraternities: Beta Theta Pi, 10; Phi Gamma Delta, 8; Sigma Chi, 9; Phi Kappa Psi, 20; Delta Kappa Epsilon, 17; Phi Delta Theta, 16; Delta Tau Delta, 6; Delta Upsilon, 16; Sigma Nu, 17. Women's fraternities: Kappa Alpha Theta, 36; Kappa Kappa Gamma, 23; Alpha Phi, 17; Alpha Chi Omega, 17; Phi Mu, 15.

Another term is almost over and as we glance back over the weeks that have passed it is somewhat difficult to determine what will be most interesting for the news letter.

Since the publication of the last KEY, Iota has pledged and initiated one new girl, Odessa Zeis, who proves herself in every respect a loyal Kappa.

The most successful undertaking of this term was the reunion of the Indiana chapters of Kappa Kappa Gamma. Each one was filled with fraternity enthusiasm and it was impressed upon us how much the bonds which unite us mean.

On the day of the girls' arrival Iota gave a reception in the afternoon when Kappa's numerous friends were present. The house was beautifully decorated, the parlors being draped in

light and dark blue and all the other things arranged to correspond.

In the evening a banquet was given after an interesting fraternity meeting which was unusually helpful because our Grand Secretary was present. After the banquet, some men from the different fraternities gave an informal party in honor of the visiting Kappas. It is to be hoped that the Indiana chapters may have another reunion in the near future.

Besides this, Iota has been entertained in her Kappa homes and our usual "at home" has been given every month this term.

Iota also expects to give a large spring party June 1, and to celebrate her twenty-fifth reunion June 9. We hope to have more of our alumnae present than ever before.

#### MU—BUTLER COLLEGE.

It is a sincere pleasure to write Mu's letter for THE KEY. That enduring, loyal spirit which is characteristic of Kappa Kappa Gamma has united our girls more closely than ever before, and we can only wish our sister chapters the same close sisterhood.

Socially, we at Butler have been very active this term. Mu has given several luncheons, and our alumnae have given several delightful companies for us. In June we intend to give a large dance for all our loyal supporters.

Mu does not wage battle in the field of college politics, but the prominence and ability of our girls are recognized, notwithstanding. Elizabeth Poulsen and Charlotte Powers have been appointed assistant editors of the Butler *Collegian*; J. Anna Carpenter, our pledging, is captain of the golf club; Anne Butler is vice president of the same organization, and we could name others, but a letter should not be a college catalogue.

We were delighted to have with us not long ago our Grand Secretary, Miss Sargent. Her coming was not only a pleasure, but it also gave us a truer and more comprehensive idea of what it is to be a Kappa Kappa Gamma. We were glad to have with us, too, Edna Bartlett, of Delta, who was visiting Kate Hege.

The Butler Golf Club, organized this spring, has taken unto itself Mu chapter in a body. Almost any day one can see our girls making desperate efforts to lower their records for the course. The club has come to be a permanent feature of the college.

On April 19, we had the pleasure of hearing the Rev. Edward Everett Hale talk to us about the Battle of Lexington. Having lived within a stone's throw of the battle ground, and having known many who took part in it, his narrative had unusual interest.

Mu expects to send a full representation to the Columbus convention, and hopes to meet many loyal Kappas from the other chapters.

We have reserved the unpleasant tidings for the last. We lose this June by graduation three of our number, Grace Gookin, Blanche Noel and Anne Butler. They leave with the honors of the college, and after a most loyal connection with Mu.

#### ETA—UNIVERSITY OF WISCONSIN.

##### *Active Members.*

Grace Mary Challoner, '00,	Marian Fuller, '02,
Helen Haskell Warriner, '00,	Georgia Challoner, '02,
Jennie Ogilvie, '00,	Nell Parkinson, '03,
Mabel Fletcher, '00,	Almira Johnson, '03,
Winifred Titus, '00,	Josephine Kimball, '03,
Terese Waters, '00,	Olive Runner, '03,
Lila Bartlett, '01,	Guenivieve Mihills, '03,
Flora Mansfield, '00,	Lila Stephens, '03,
Mary Peckham, '02,	Ida Elliott, '03,
Helen Thompson, '02,	Jessie Sherwood, '03,
Carrie Holah, '02,	Clara Froelich, '04,
	Ethel Raymer, '02.

*Chapter*.—Number of active members, 23; total membership from chapter establishment, 150; number of year's initiates, 8. Honors: Ida Elliot, treasurer of Sophomore class; Helen Warriner, vice-president of Senior class; Clara Froelich, Helen Warriner, Grace Challomer, on the *Sphinx* board.

*University*.—Number of members in faculty, 85; instructors, 45; number of students, 1712; number of women, 500. Men's fraternities: Phi Delta Theta, 26; Beta Theta Pi, 30; Phi Kappa Psi, 26; Chi Psi, 25; Sigma Chi, 18; Delta Upsilon, 26; Delta Tau Delta, 18; Phi Gamma Delta, 21; Theta Delta Chi, 21; Psi Upsilon, 25; Kappa Sigma, 23; Phi Delta Phi, 30. Women's fraternities: Kappa Kappa Gamma, 23; Delta Gamma, 27; Gamma Phi Beta, 19; Kappa Alpha Theta, 19; Pi Beta Phi, 19; Alpha Phi, 18; Delta Delta Delta, 19.

In the midst of studying for the fraternity examinations, Eta pauses to take breath and send her greeting to those who are



struggling under the same difficulties. With pride she introduces to you her new member, Bess Morrison, and her new pledgling, Martha Fay, who is the niece of one of our alumnae, Miss Dodge, but at the same time bids you mourn the loss of two of her sisters, Olive Runner who was called home by the illness of her mother, and Josephine Kimball, whose health does not permit her to remain. We shall miss them both sadly and their places at chapter meeting must remain vacant.

Eta is now happy over the winning of the banner in the inter-sorority race, which took place May 5. This is the second one of the kind which has been won for us.

May 18 we expect to depart from the dull routine of school life for a little dissipation in the shape of our formal party for the year.

We were all made happy by meeting our honorary Kappa, Mrs. Julia Ward Howe, during the last week. She gave an interesting talk at the Woman's Club and that evening a reception was given for her, when we grew to know her a little better.

Eta wishes you all a pleasant vacation.

#### UPSILON—NORTHWESTERN UNIVERSITY.

##### *Active Members.*

Celia Ann Drew, '00,	Dorothy Cushman, '02,
Gertrude Reed, '00,	Frances Rawlins, '02,
Ruth Woolson, '01,	Nellie Ball, '03,
Edna Bronson, '02,	Mrytle R. Strickler, '03,
Grace Schuman, '02,	Martha M. Wood, '03,
Vinnie Northey, '02,	Mary Brown, '03,
	Estelle Rose, '03.

*Chapter*.—Number of active members, 13; number of year's initiates, 6. Honors: Ann Drew, class historian; Ruth Woolson, class treasurer and member of *Syllabus* board; Edna Bronson, member of Sophomore play and *Syllabus* board; Grace Schuman, member of Sophomore play, of *Syllabus* board, and vice-president of class.

*University*.—Number of faculty, 38; number of students, 615; number of women, 297. Men's fraternities: Pi Beta Phi, 26; Phi Kappa Sigma, 10; Phi Kappa Psi, 19; Sigma Chi, 8; Sigma Alpha Epsilon, 14; Delta Tau Delta, 15; Sigma Nu, 16; Delta Upsilon, 20; Phi Delta Theta, 12. Women's fraternities: Alpha Phi, 14; Delta Gamma, 16; Kappa Kappa Gamma, 13; Kappa Alpha Theta, 14; Gamma Phi Beta, 12; Alpha Chi Omega, 13; Zeta Phi Eta, 11; Pi Beta Phi, 15; Delta Delta Delta, 14; Omega Psi, 11.

The year is near its close and soon the girls will be separated. Some of us will be together next year but several will not come back to college. When we think of the parting the fraternity bonds seem closer than ever.

The past semester has been a happy one. One of our greatest pleasures was the privilege of meeting and entertaining seven sisters from Beta Lambda.

We must introduce to you our fledglings, Edith Bradley and Elizabeth Bronson.

EPSILON—ILLINOIS WESLEYAN UNIVERSITY.

*Active Members.*

Idelle Kerrick, '97,	Alma Hamilton, '01,
Leona Miller, '99,	Letta Brock, '00,
Clara De Motte, '97,	Bessye Weltye, '01,
Florence Parritt, '99,	Lillian Arnold, '02,
Margaret Cole, '00,	Anita Lundy, '02,
Virginia Sinclair, '00,	Mary Probasco, '02,
Kate Downing, Sp.,	Gertrude Means, '03,
	Grace Cochran, '01.

*Chapter*:—Number of active members, 15; total membership from chapter establishment, 165; number of year's initiates, 2. Honors: Bessye Weltye and Virginia Sinclair on the *Argus* staff.

*University*:—Number of faculty, 15; number of students, 365; number of women, 96. Men's fraternities: Phi Gamma Delta, 15; Sigma Chi, 19. Women's fraternities: Kappa Kappa Gamma, 15.

These beautiful spring days have caused us to put away our chafing dishes and to think of picnics and vacation and most of all, to count the weeks between now and convention.

Since our last letter we have tried the experiment of giving a fraternity "at home," Clara DeMotte opened her home to us and Epsilon issued invitations to all the fraternity people in college. Seven fraternities were represented among some eighty callers. Zoe Smith of Kappa assisted Miss DeMotte in receiving her guests.

April 14 all the active Kappas took tea together in Kappa Hall and then attended the term social. But the last and still talked of event was our dance, given in Cooper Hall, May 11. About eighty invitations were issued and many of our out of town Kappas returned and added much to our enjoyment.

We have one new member in our chapter, although we cannot introduce her as a new Kappa. Kate Downing of Iota has affiliated with Epsilon.

Until that time, not so very far away, when we shall meet Kappas from East and West, Epsilon sends her greetings to all chapters.

### DELTA PROVINCE.

#### CHI—UNIVERSITY OF MINNESOTA.

##### *Active Members.*

Clare Cross, '00,	Polly Bullock, '03,
Lila Marchand, '00,	Harriet Armstrong, '03,
Mabel Stone, '00,	Flora Edwards, '03,
Elien Janney, '01,	Cornelia Kennedy, '03,
Vera Morey, '01,	Florence Watson, '03,
Grace Wheaton, '02,	Virginia Rugg, '03,
Alice Dougan, '02,	Cleora Wheeler, '03,
May Merrill, '02,	Elsie Stone, '03,
Grace Trask, Sp.,	Inez Lord, '03,
Florence Fowle, Sp.,	Avery Trask, Sp.,
Eva Smith, Sp.,	Helen Mills, Sp.

*Chapter*:—Number of active members, 22; total membership from chapter establishment, 110; number of year's initiates, 11. Honors: Lila Marchand, appointed by President to Board of Fraternity Governors; Alice Dougan, class poet for 1902.

*University*:—Number of faculty, 250; number of students, 3226; number of women, 617. Men's fraternities: Chi Psi, 32; Phi Delta Theta, 18; Delta Tau Delta, 21; Phi Kappa Psi, 18; Sigma Chi, 19; Beta Theta Pi, 29; Delta Kappa Epsilon, 13; Phi Gamma Delta, 13; Delta Upsilon, 20; Psi Upsilon, 19; Alpha Delta Phi, 18; Theta Delta Chi, 15; Phi Alpha Gamma, 8; Zeta Psi, 12; Women's fraternities: Kappa Kappa Gamma, 22; Delta Gamma, 16; Kappa Alpha Theta, 18; Alpha Phi, 21; Delta Delta Delta, 15.

On the eighteenth of April, Chi attended the wedding of Ruth Myers and Rev. Louis Gouverneur Morris. Two of our seniors, Mabel Stone and Lila Marchand, acted as bridesmaids. Mr. and Mrs. Morris will make their home in Oswego, N. Y.

This event, which was of so much interest to us all, was followed by our twentieth annual banquet. Fifty-one Kappas, active and alumnae, gathered about the long table to sing the praises of our fraternity, to remind each other of the debt we

owe her and to pay tribute to her lasting help and benefits. It was a joyful evening, one which will live long in the memories of us all, a constant reminder of the blessings of fraternity.

During the second week in May we were so fortunate as to meet one of our honorary members, Mrs. Julia Ward Howe, who came to the city for the purpose of delivering a lecture. To Mrs. Partridge, one of Chi's charter members, we are indebted for the opportunity which she gave us of meeting Mrs. Howe and of spending an afternoon in the presence of a woman whose influence for good has been felt for so many years.

Chi's freshmen have, from the first, been a source of pleasure to the rest of the chapter, but never more so than a few days ago when they gave us a faultless spread in the chapter rooms. Everything had been arranged by a master hand and the usual colliding in doorways and stumbling over chairs, painfully characteristic of such occasions, were entirely lacking. We ended by giving impromptu responses to toasts which were filled with the praises of Chi's freshmen.

The same afternoon eleven of the girls left for Lake Minnetonka, where they spent two very merry days together at the home of Alice Dougan.

Chi hopes that all her sister chapters may spend as happy a summer as she anticipates for her own members.

#### BETA ZETA—IOWA STATE UNIVERSITY.

##### *Active Members.*

Kathryn Way, '00,	Helen Carder, '02,
Edna Sprague, '00,	Anna Barrett, '02,
Edith Macomber, '00,	Helen Morton, '02,
Maude Kingsbury, '01,	Florence Seerley, '02,
Alice McGee, '01,	Gladys Whitley, '03,
Katherine Close, '02,	Ethel Swire, '03,
Saidie Hess, '02,	Anna Close, Sp.,
Carolyn Tulloss, '02,	Jean Macbride, Sp.

*Chapter.*—Number of active members, 16; total membership from chapter establishment, 106; number of year's initiates, 3. Honors: Bertha Blum, Phi Beta Kappa; Helen Clapp, French scholarship; Alice McGee, Old English prize; Katherine Close, Maude Kingsbury, Anna Barrett, Junior Annual Board; Gladys Whitley, Ethel Swire, Florence Seerley, elected to Ivy Lane, a Freshman-sophomore social, literary society.

*University*.—Number of faculty, 49; number of students, over 700; number of women, 172. Men's fraternities: Beta Theta Pi, 25; Phi Kappa Psi, 18; Delta Tau Delta, 19; Phi Delta Theta, 18; Sigma Nu, 22; Phi Delta Phi, 24; Xi Nu Phi, 13; Phi Alpha Gamma, 4. Women's fraternities: Pi Beta Phi, 14; Kappa Kappa Gamma, 16; Delta Gamma 12.

Beta Zeta has very little to tell in the way of events since the last chapter letter. One very enjoyable thing was a spread we had on May first, the anniversary of our founding, at the home of Helen Tanner. Each guest was given a card and pencil and was asked to draw a Kappa key on one side and on the other side to write a verse about the pin or flower or anything connected with the fraternity. A prize was given for the best poem and we found many of them almost worthy of publication.

We rejoice very much to introduce to the other chapters a new pledgling, Marguerite Hess, who will be initiated next week.

We expect to have three of our brightest alumnae members at Commencement time, Mrs. Beulah Macfarland Williams, Ruth Paxon and Wilfred Myers, so that we expect to have a happy reunion at that time. Nevertheless, it will be a sorrowful time for all of us, for we shall lose three of our strongest members by graduation and we do not see how we can get along without them.

#### SIGMA—UNIVERSITY OF NEBRASKA.

##### *Active Members.*

Clara Hammond, '00,	Teresa Salle,
Adelayd Whiting, '00,	Grace Bennett, '02,
Mabel Richards, '01,	Blanche Emmons, '03,
Nelle Holdbrook, '01,	Emily Jenkins, '03,
Edna Wetzell, '01,	Constance Sarbach, '03,
Emma Outcault, '02,	Anna Hammond, '03,
Mabel Hays, '02,	Blanche Edmiston, '03,
Blanche Hargreaves, '02,	Vine Gahan, '03,
Laura Houtz,	Rosanna Bradt,
	Blendena Emmons.

*Chapter*.—Number of active members, 19; total membership from chapter establishment, 90; number of year's initiates, 10.

*University*.—Number of faculty in collegiate department, 187; number of students in collegiate department, 2,205; women in the department, 1,200. Men's fraternities: Phi Delta Theta, 16; Sigma Chi, 14; Beta Theta Pi, 17; Sigma Alpha Epsilon, 18; Delta Tau Delta, 17; Phi Kappa Psi, 21; Alpha Tau Omega, 16; Kappa Sigma, 18; Phi Gamma Delta, 20; Delta Upsilon,

18. Women's fraternities : Kappa Kappa Gamma, 19 ; Kappa Alpha Theta, 14 ; Delta Gamma, 17 ; Delta Delta Delta, 16 ; Pi Beta Phi, 13.

Another year is drawing to its close and as we look back over the past month we cannot help but feel that it has been a successful one for Sigma. We are enthusiastic about our plans for next year, particularly as we expect to have our seniors return and take post-graduate work. We are enthusiastic about the university, too, for the college world has no doubt heard of the election of E. Benjamin Andrews to the Chancellorship of Nebraska. He will receive a hearty welcome from all Nebraska and from Professor Bessey who has so ably filled the position of acting chancellor during the past year. This is the first time that the president of an eastern college has come west and we feel that it will be a gain for us.

We have three new girls who are wearing the key, Anna Hammond and Grace Bennett, the two pledges mentioned in our last letter, and Vine Gahan, a sister and cousin of two of our older members. Each new girl has seemed to step into the place that has been waiting for her and has helped bring the chapter into closer relationship.

The usual excitement which marks the closing of college has caused no little enjoyment. The first of May was celebrated as "Dewey Day" and a cannon obtained in the late war with Spain was unveiled on the University campus. It is especially fitting that it should be placed here, because so many of the University men fought in the war and quite a number gave their lives.

Friday evening a dance was given for Omega Psi, a "coming out" party for they had just obtained their charter. Two of Sigma's girls, Laura Houtz and Mabel Hays, became charter members.

Last evening the resident alumnae gave the annual banquet to the active members at the home of Mrs. Hardy, and it is the first time in our chapter history that a Kappa banquet has been given in a Kappa's own home. It was a most delightful affair in every way and made us realize more than ever the deep interest and loyalty of our alumnae.

There were forty-three of us to sit down at the long table, which was beautifully decorated with our flower and colors. Over the table, suspended by a huge bow of light and dark blue

ribbons was a ring of tiny blue lanterns. Beneath them were the candelabra with dark blue candles. At each place were little bon bon dishes of double blue paper and plate cards in the form of fleur-de-lis. These were exquisitely painted in water colors by one of our alumnae.

Mrs. Marshall acted as toast mistress and won all the girls' hearts by her grace and wit. We had many alumnae from out of town and two Kappas from other chapters, Mrs. Burnett, one of the charter members of Beta Beta and Miss Shepherd of Omega. Mrs. Burnett has been with us often for she is the wife of one of our professors. The banquet was a most enjoyable affair and our alumni deserved all the praise that could be given them.

Sigma sends all chapters her best wishes for a pleasant summer.

#### PI—UNIVERSITY OF CALIFORNIA.

##### *Active Members.*

Alice Humphreys, '00,	A. Elise Wenzelburger, '02,
Mabel F. Ruch, '00,	Marion R. Wilson, '02,
Ethel Catton, '01,	Mabel Donaldson, '03,
Annie M. Jennings, '01,	Leila Graves, '03,
Viola Pattiani, '01,	Elsa Lichtenberg, '03,
Eva Powell, '01,	Gwendolyn Mathews, '03,
Isabelle Stockton, '01,	Alma Sherman, '03,
Emma Moffat, '02,	Edna Wemple, '03,
Helen Powell, '02.	

*Chapter*.—Number of active members, 18; total membership from chapter establishment, 39; number of year's initiates, 7. Honors: Alice Humphreys, author of senior extravaganza; Viola Pattiani, a leading part in the junior farce; Elise Wenzelburger, treasurer of the Associated Women Students, member of *Blue and Gold* staff; Edna Wemple, secretary of Associated Women Students.

*University*.—Number of faculty, 242; assistants, 131; number of students, 2,700; number of women students, 850. Men's fraternities: Zeta Psi, 14; Chi Phi, 12; Delta Kappa Epsilon, 25; Beta Theta Pi, 18; Phi Delta Theta, 18; Sigma Chi, 9; Phi Gamma Delta, 15; Sigma Nu, 12; Sigma Alpha Epsilon, 19; Chi Psi, 6; Kappa Alpha, 15; Delta Upsilon, 26; Delta Tau Delta, 19; Phi Kappa Psi, 17; Alpha Tau Omega, 12; Theta Delta Chi, 12. Women's fraternities: Kappa Alpha Theta, 17; Gamma Phi Beta, 20; Delta Delta Delta, 9; Kappa Kappa Gamma 18.

The course of events each year invariably crowds all sorts of pleasures into the few weeks just preceding examination time and Pi has had a large share of both frivolity and hard study.

The general college life, here in Berkeley, has been made unusually delightful this last semester by the royal hospitality of Mrs. Hearst. She has entertained us all at various functions in her magnificent reception hall. Her Sunday afternoon symphony concerts, led by the famous Henry Holmes, has been a rare treat. Each class has had its turn in being entertained and one general joy was when Gadski sang. After each concert light refreshments were served in the supper room, made fascinating by its Egyptian hangings.

The receptions to the different classes were delightful and have afforded opportunities for knowing one another, opportunities which has been lacking at Berkeley because of the lack of dormitories. Her dinners to the college girls were another rare treat. All this royal hospitality is now at an end, for Hearst Hall is to be divested of its luxurious tapestries and Turkish rugs and turned into a gymnasium for the college girls. Mrs. Hearst will not reside in Berkeley next term and we shall all miss her greatly.

Aside from all this festivity we have turned into the proverbial owls in preparing for our term examinations. Such students as we have been! The wee small hours of the night have found us still working, but a reward for the whole chapter came when Alice Humphreys was the successful competitor in writing the class day extravaganza.

The performance was given, as usual, in a grove of eucalyptus trees, and the hundreds of spectators viewed it from the gradually sloping hillside. The members of the graduating class performed the farce, in which the legend of the Golden Fleece was woven. The costume and stage effects were Grecian. There were many good-natured hits for the members of the graduating class and for the different fraternities, and we were all proud of our playwright who was soon to graduate.

Besides Alice Humphreys, we lose Mabel Ruch, and Pi bade farewell to these two members last Friday at our Senior dinner. Most of the chapter alumnae were present and it was a happy ending of a most fortunate college year.



## BETA ETA.—LELAND STANFORD JR. UNIVERSITY.

*Active Members.*

Susie L. Dyer, P.G.,	Jessie Knepper, '02,
Ida Wehner, P.G.,	May G. Kimble, '02,
Carrie Goodhue, Sp.,	Ethel McLellan, '02,
Edna Hobson, '01,	Katherine Gridley, '03,
Clara L. Martin, '00,	Eulavelle Sweetland, '03,
Winifred J. Morgan, '01,	Jane E. Evans, '03,
Eva M. Wheeler, '02,	Anita B. Perrin, '03,
Helen Downing, '02,	Mary R. Barnes, Sp.,
Rowena Merritt, '01,	Jessie E. Barnard, '04,
	Theodora Stubbs, '01.

*Chapter*.—Number of active members, 19; total membership from chapter establishment, 53; number of year's initiates, 6.

*University*.—Number of faculty, 131; number of students, 1,331; number of women, 453. Men's fraternities: Zeta Psi, 15; Phi Delta Theta, 23; Phi Kappa Psi, 14; Sigma Nu, 24; Sigma Chi, 15; Sigma Alpha Epsilon, 21; Delta Tau Delta, 15; Beta Theta Pi, 20; Chi Psi, 9; Delta Upsilon, 26; Kappa Sigma, 12; Phi Delta Phi, 19. Women's fraternities: Kappa Alpha Theta, 17; Kappa Kappa Gamma, 19; Delta Gamma, 18; Alpha Phi, 17.

---

*In Memoriam.*

EVA BATES SANFORD.

WHEREAS, It has pleased God in His infinite wisdom to take to Himself our sister, Eva Bates Sanford, therefore be it

*Resolved*, That we, the Beta Beta Chapter of Kappa Kappa Gamma, having lost in her a loyal sister do express our appreciation of her noble qualities which endeared her to all who knew her and will cause her memory to be forever cherished in our sisterhood.

*Resolved*, That we extend to her bereaved family our heart felt sympathy and consolation.

*Resolved*, That a copy of these resolutions be sent to the family, that a copy be inserted in the minutes of our chapter and that a copy be furnished the *Latch String*, THE KEY, the *Laurentian* and the local papers for publication.

MARY ATWOOD MANLEY, } For the Alumnae  
SYBIL E. BAILEY. } Association.

MABEL H. BENNER, } For the Active  
HELEN M. PROBST. } Chapter.

---

### *College and Fraternity Notes.*

The Hanover chapter of Kappa Alpha Theta has resigned its charter.—*Beta Theta Pi.*

Alpha Chi Omega, the musical society, now has nine chapters, three having been established since the 1898 Baird appeared. The new branches are at Bucknell, Michigan and Illinois. The *Lyre* is in its fourth volume. A complete list of the society's membership was published in a recent number. Among the honorary members are Innes Bloomfield-Zeisler, Rives King, Marie Decca, Maud Powell and Ellen Beach Yaw.

The Executive Committee of Phi Kappa Psi has resolved that each set of petitioners for a charter as a condition precedent to obtaining the charter should be established in a chapter house at the time of installation or give satisfactory assurance of their ability to maintain a chapter house during the future life of the chapter.

Phi Gamma Delta will hold its fifty-second ekklesia at the International Hotel, Niagara Falls, July 27, 28, 29 and 30.

Beta Theta Pi will hold its Sixty-fifth Annual Convention at Put-in Bay, O., August 28, 29, 30 and 31.

Delta Tau Delta holds its Fourth National Convention at Cincinnati, O., June 26, 27, 28 and 29. This fraternity entered the University of California April 13.

President Rogers, of Northwestern, has been having confidential talks with representatives of the sororities and fraternities. He wants smoking on the streets abolished, better conduct in the fraternity houses, an enforcement of the social regulations, no more pledging of academy students. He also asked consideration of the plan of having a resident alumnus act for each chapter in its dealings with the faculty, and of postponing initiations till the second semester. He said that the fraternity that had broken the social rules by giving more than one party a year must make amends or leave the university.

The recent incorporation of Barnard into Columbia University means that the relation of a women's college to an institution of advanced learning which does not countenance coeducation may be clearly defined. In effect, the agreement makes it plain

that at Columbia men and women will no longer meet in undergraduate courses leading to the degree of Bachelor of Arts. In courses leading to the higher degrees, however, Master of Arts or Doctor of Philosophy, they will be permitted to sit in the same classes.

The agreement now existing between Barnard and Columbia has a number of provisions of public interest. It states, in the first place, that the president of Columbia is likewise president of Barnard and a trustee of the college. He presides at faculty meetings and has general supervision of the educational administration, as in the other schools of the university. The internal administration is to be carried on by a dean appointed by the president and approved by the Barnard trustees. The dean has a seat in the university council, with full right to vote on all matters. The faculty consists of all the professors of the university who give instruction at Barnard. The inter-relation of the faculties of both places is explained by the statement that for all services rendered in the university by Barnard officers an equivalent shall be rendered at Barnard by officers of like grade in the university. This not only puts Barnard teachers on the same standing with those of the other schools, but it also obviates the difficulty, now existing, of the payment of two salaries to one officer.

The specific statement in the provision concerning coeducation is that after July 1, 1904, all of the instruction for women leading to the degree of A.B. shall be given separately at Barnard College, except that courses open to seniors of Columbia counting toward the Teachers College diploma shall continue to be open to Barnard seniors. Barnard will first establish its undergraduate courses adequately, and then as its means allows it will establish additional professorships in the university providing for courses which shall be open to both men and women, to the end that the opportunities for higher education for both may be increased. The university on its part agrees to accept as students women who have taken their first degree, and to allow them on the same terms as men to pursue courses, with the consent of those delivering the lectures, in the faculties of philosophy, political science and pure science. These courses lead to the degree of M.A. or Ph.D. Women, therefore, will not in any case

be admitted to the technical schools. In all this incorporation Barnard retains its separate corporate existence, for its trustees continue to provide the financial support.

### CONVENTION NOTICE.

#### PROGRAMME OF THE FIFTEENTH NATIONAL CONVENTION.

All business sessions at University Chapel.

Tuesday, August 21—	Friday Morning, 24—
Arrival of Delegates.	Business Session.
Tuesday Evening—	Friday Evening—
Informal Reception.	Reception and Dance.
Wednesday Morning, 22—	Saturday Morning, 25—
Opening Session.	Business Session.
Wednesday Afternoon—	Saturday Afternoon—
Committee Work.	Business Session.
Wednesday Evening—	Saturday Evening—
Committee Work.	" Frat Night."
Thursday Morning, 23—	Monday Morning, 27—
Committee Work.	Business Session.
Thursday Afternoon—	Monday Afternoon—
Business Session.	Closing Session.
Monday Evening—Banquet.	

Beta Nu Chapter entertains the National Convention from August 21 to August 27. All information in regard to accommodations can be had by writing to Miss Mignon Talbot, 640 Franklin Avenue, Columbus, O.

During the week, board may be obtained near the University, on Tenth and Eleventh Avenues, for \$7.00 per week. The rates at the hotels will be \$2.50 per day.

No definite arrangements can be made in regard to passenger rates.

The Marshal of the Convention is Miss Mary Bole Scott, 926 Oak Street, Columbus, Ohio.

### *Editorials.*

The place chosen for convention is favorable to a large attendance, being easily accessible for the Ohio, Illinois and Indiana chapters. This fact in itself foretells an unusually large gathering of alumnae, as about two-thirds of the graduates upon our rolls have been furnished by these chapters.

There can not be too many present, and there will be a cordial welcome for all who come. Beta Nu has already shown her hospitable spirit in the way in which the invitation was extended, and nearly every delegate already knows a friend in the Grand Registrar.

Graduates and undergraduates are both urged to be present. To the undergraduate, convention is a great experience and gives her a realization of the scope of the national fraternity, not otherwise to be obtained; to the graduate, convention means the delight of meeting old friends and a sure revival of interest in the organization, however much it may have flagged.

Let every member come, because she cares about the fraternity, because it will be a pleasant outing, and because she will have a royally good time.

One of the chapters suggests through the convention letter that only two manuscripts a year be required by THE KEY. The suggestion is likely to prove popular, and unless some one protests it will pass convention for want of opposition as many another measure has done.

Such an arrangement would seriously cripple the magazine. This statement is not based on imagination but is the result of six years experience. In that time scarcely half of the regular contributions to THE KEY have been appropriate for publication. About one-fourth of the regular quarterly supply has consisted of articles on subjects entirely foreign to college or fraternity life and so, wholly unsuitable; the writers of another fourth have limited themselves to one hundred and fifty words, so that their articles when printed would not fill half a page and consequently have little value for magazine uses, while the manuscripts of the remaining half have just sufficed to fill the pages by long custom

allotted to *The Parthenon*. It has been the Editor's aim to have all chapters equally represented in *The Parthenon* and this has been carried out as far as their contributions allowed it.

Outside of *The Parthenon* and Alumnae Department nearly all the articles published have been obtained by personal solicitation, oftentimes repeated. Were the chapters limited to two articles each year the supply would become so inadequate that a much greater burden would be thrown upon its management, a thing which ought not to happen, under the existing conditions.

The case is more serious with us than with the older and larger organizations, whose numerous banquets and province conventions enable them to fill many pages with glowing accounts of various festivities. Kappa Kappa Gamma has nothing of that sort to rely upon. *THE KEY*'s only hope lies in publishing articles which shall be of value to the chapters in their college life. If it is able to do this, the chapters should be willing to support it and contribute to each number. If it cannot it seems wiser to abandon it and to spend the money which its publication requires in something of more vital good to the fraternity.

### Exchanges.

The exchanges, received since the last issue of THE KEY are: The Palm of Alpha Tau Omega, March, 1900; Kappa Alpha Journal, March, 1900; The Rainbow, March, 1900; The Phi Kappa Psi Shield, March, 1900; Phi Gamma Delta Quarterly, March, 1900; The Record, March, 1900; Delta Upsilon Quarterly, March, 1900; Sigma Chi Quarterly, March, 1900; The Scroll, February and April, 1900; The Shield of Theta Delta Chi, March, 1900; The Trident, March, 1900; The Kappa Alpha Theta, March, 1900; The Anchora, March, 1900.

Aside from the ordinary chapter letters *The Palm* much resembles the "medley" of the college glee club. It opens with an article on Yale Societies from *The Shield* of Phi Kappa Psi, continues with an article on College Fraternities from *The Independent* and follows this with an article on South Carolina's Opposition to College Fraternities and a full page poem from the *Kappa Alpha Journal*. Additions to the catalogue roll and several personal notices complete the issue.

The *Kappa Alpha Journal* rejoices in a photograph of Lieutenant Hobson, accompanied by a letter upon "The Power of Sentiment and Work" from which the following paragraph is taken: "It may be a source of satisfaction to our fraternity brothers and young people who are striving toward ideals and nurturing lofty sentiments to note the strong strain of chivalry and the mighty power of sentiment in our present day. . . . But sentiment, though a mighty power, cannot stand alone. . . . As long as effect follows cause, victory and success will turn to the side of the individual or the nation that does the hard work involved, that puts forth efforts, persistent, tireless unrelenting."

The alumni question troubles all fraternities, and out of the many articles about it a part of one comes from *The Rainbow*:

"The Fraternity not only loses when the chapter gets out of touch with its graduates, but the chapter itself is greatly weakened. The active chapter is ever a changing quantity. Old men leave and new men take their places; the chapter that today is astonishing the college world with the brilliance of its meteoric career may in a single college generation have passed into outer darkness. Today there is one of our chapters that has to its



credit twenty-six years of uninterrupted and successful existence. It does not mean that dark days have not come to that chapter, but when its career has been menaced it has not had to stake its life on the few men on its active roll, there has stood behind it with a strong arm to help, a large and increasing body of alumni whose interest was as strong as when they left the college walls. We could draw innumerable instances of chapters once strong and vigorous that have neglected their alumni, and when dark waters flowed over them found only straws at which to clutch for rescue."

The *Shield of Phi Kappa Psi* publishes the forty-seventh annual report of its Grand Secretary, an extensive document giving statistical and general information. A few sensible words about chapter reports are quoted below :

"A word concerning the annual chapter reports. These are required for the enlightenment of the officers of the fraternity, with regard to the work of the chapters. The Executive Council can not ascertain the true condition of a chapter in any other way, unless by the sending of a representative to each chapter for an official investigation. A great deal depends upon the chapter report. Its inaccuracy renders the secretary's report inaccurate. Its incompleteness brings frequently an unjust condemnation upon the chapter. The chapter's reputation is at stake. The corresponding secretary has more than an ordinary responsibility in the compilation of his report. It should be neat in appearance, legible, carefully executed, and should contain statements concerning all matters designated."

The same magazine contains an excellent article on "Development by Contact." If there were space it should be quoted entire ; as it is, a part of it is given here :

"The ideal chapter is composed of divergent classes of men, all under the designation "good moral character". By this means, if the privileges of a chapter are properly embraced, a give and take spirit is developed, a conception is aroused that perhaps you may be right and I wrong. Given honest men, sincere men, truth seeking men, and divergent views upon the relative values of a dissertation upon the finite conception of the unknowable and a full dress ball, the propriety of the higher criticism or the relative values of the Salvation Army or the Concord philosophy as agencies for world improvement, will be for the betterment of the chapter and the future lives of its members. Thus, respect for the opinions of others and tolerance for others' ideas will be developed ; and thus will be acquired a regard for the rights of others both in practice and in theory, without which no man, however learned, however otherwise polished, however much influence he may possess, however lofty his ambitions, can

ever hope to climb to the heights of success with visions of which his youthful hours are wont to be regaled. The undergraduate may not be aware of the value of this training, he may lament that the chapter is not more "harmonious," but if it is moving upon the lines indicated, and has the right kind of material, it is but for the future good of every member. In fact it is one of the most important phases of education acquired in college, one of the priceless advantages of fraternity association."

A valuable article on Alumni Dues in the *Sigma Chi Quarterly* quotes from the Sigma Chi constitution thus :

(a) SECTION 1. Each active member of the Fraternity shall, on or before sixty days of the time when he expects to sever his membership with his chapter, by graduation or otherwise, forward to the Grand Quaestor, through the Chapter Quaestor, his two notes for five dollars each, payable during the first and second Januarys respectively, next succeeding such severance from his chapter by graduation or otherwise.

SEC. 2. Such notes shall be without interest ; shall bear the future address of the member making them ; and shall entitle him to all regular publications during the period of two years succeeding such graduation on leaving college. The proceeds of such notes shall be credited, at least one-half to endowment and one-half as provided by statute.

SEC. 3. Such note givers as shall subsequently become members of other chapters, shall be entitled to have the dates of their note payments postponed to the first and second Januarys respectively, next succeeding their severance from such latter chapter."

Attention may be called to the fact that one-half only of the income of these graduate notes will go to our Endowment Fund, the other half being reserved for distribution by statute. Our present Statute very properly decides that the second half of the proceeds in question shall go to the support of the *Sigma Chi Quarterly and Bulletin*, because all of our graduates will hereafter receive these during the two years of their note payments, thus placing a new financial burden upon the publications, because of their wider distribution. The benefit to our entire membership from thus getting our publications regularly into the hands of younger alumni need only be suggested.

*The Phi Gamma Delta Quarterly* gives a long account of that fraternity's great festivity. On March 16, six hundred and fifty members of Phi Gamma Delta attended the performance of "Ben Hur" at the Broadway Theatre in New York City. The theatre was decorated with college and fraternity flags, college songs were sung and special programmes were printed, containing a half-tone picture of General Wallace, seated in his study. Alto-

gether, it seems to have been an occasion that would give pleasure to any fraternity member.

From *The Record* is clipped these sensible words about alumni associations :

“The difficulty, if not the impossibility, of trying to make alumni associations assume the functions of social clubs is often forgotten by the young enthusiast. Social clubs must spring into existence naturally, and not because of a theory that all members of an alumni association should be agreeable to all others. Men from various chapters necessarily have different social aspirations and inclinations, varying with the kind of schools at which they were educated. While all may be good men for an alumnus chapter, they may not all be men who care to join a purely social club. It is wiser to keep the regular social clubs to their original functions, and not attempt to merge them with the college fraternity idea, between which there is no necessary logical connection.”

On December 15, 1899, Delta Upsilon installed a chapter at the University of Toronto. A song composed for that occasion is so pleasing that we repeat it all here :

“ Stand to-night at the forge,  
And hammer and sing by the blaze,  
Hammer and sing while the quick blows ring,  
For your work is for future days.

CHORUS.

Sing for the justice we boast,  
Sing for the name that we bear,  
Hammer and sing while the quick blows ring,  
For another link we prepare.

Link by link you have wrought  
Of metal that's matchless and true,  
Old is the chain and you forge again,  
A new link for old Delta U.

CHORUS.

One link more to the chain,  
This one that is yet to be tried,  
Shower and sun,—when the trial's done,  
May we then still be side by side.

CHORUS.

Linked with glorious dead,  
And linked with the deeds of the past,  
Each one you weld spreads the fame you've held  
O'er a realm that is still more vast.

CHORUS.

So we sing by the forge  
 And hammer this link to the chain,  
 Singing to you, dear old Delta U.,  
 Till the rafters repeat it again.

CHORUS.

*The Scroll's* last two issues have been noteworthy for very interesting reviews of various fraternity catalogues. The author, Mr. Walter B. Palmer, speaks *ex cathedra* and passes the following judgment upon Psi Upsilon and Alpha Delta Phi :

Ψ. Υ. is another fraternity of this class. Ψ. Υ. and Α. Δ. Φ. are probably more alike than are any other two fraternities. So closely have they remained side by side that a person seldom thinks of one without being reminded of the other. So intimate is the association as to suggest the conclusion that the policy of one has been controlled very largely by that of the other, and that one of them hesitates to make an advance for fear the other will gain the reputation of being more conservative. Conservatism with these two fraternities, as well as with some other eastern orders, is a fetich, on the altars of which they make many sacrifices. It was not always so, for before the civil war Α. Δ. Φ. and Ψ. Υ. were not governed by narrow policies, and in this period they were much stronger as compared with other fraternities than they have ever been since. They are now established in the same sections, they have about the same number of chapters and about the same number of members. The principal differences between them are that Α. Δ. Φ. had two southern chapters before the war, and has entered two Canadian institutions during the last decade, while Ψ. Υ. has never crossed Mason and Dixon's line or the northern border of the United States.

*The Shield* of Theta Delta Chi has been transferred from the Cornell to the Williams College chapter. The new editor follows the same lines as his predecessor, so that the change in management is not noticeable. The present issue contains a detailed account of the convention lately held in Washington.

The women's magazines are always interesting to THE KEY's readers, but as the chapters have an opportunity to see them for themselves, it seems unnecessary to review them. Special attention, however, is called to Kappa Alpha Theta's article on her Educational Committee.